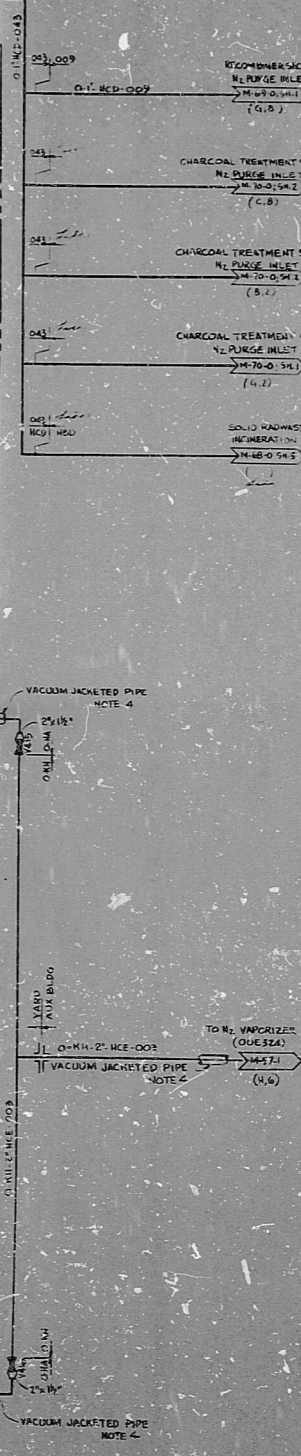
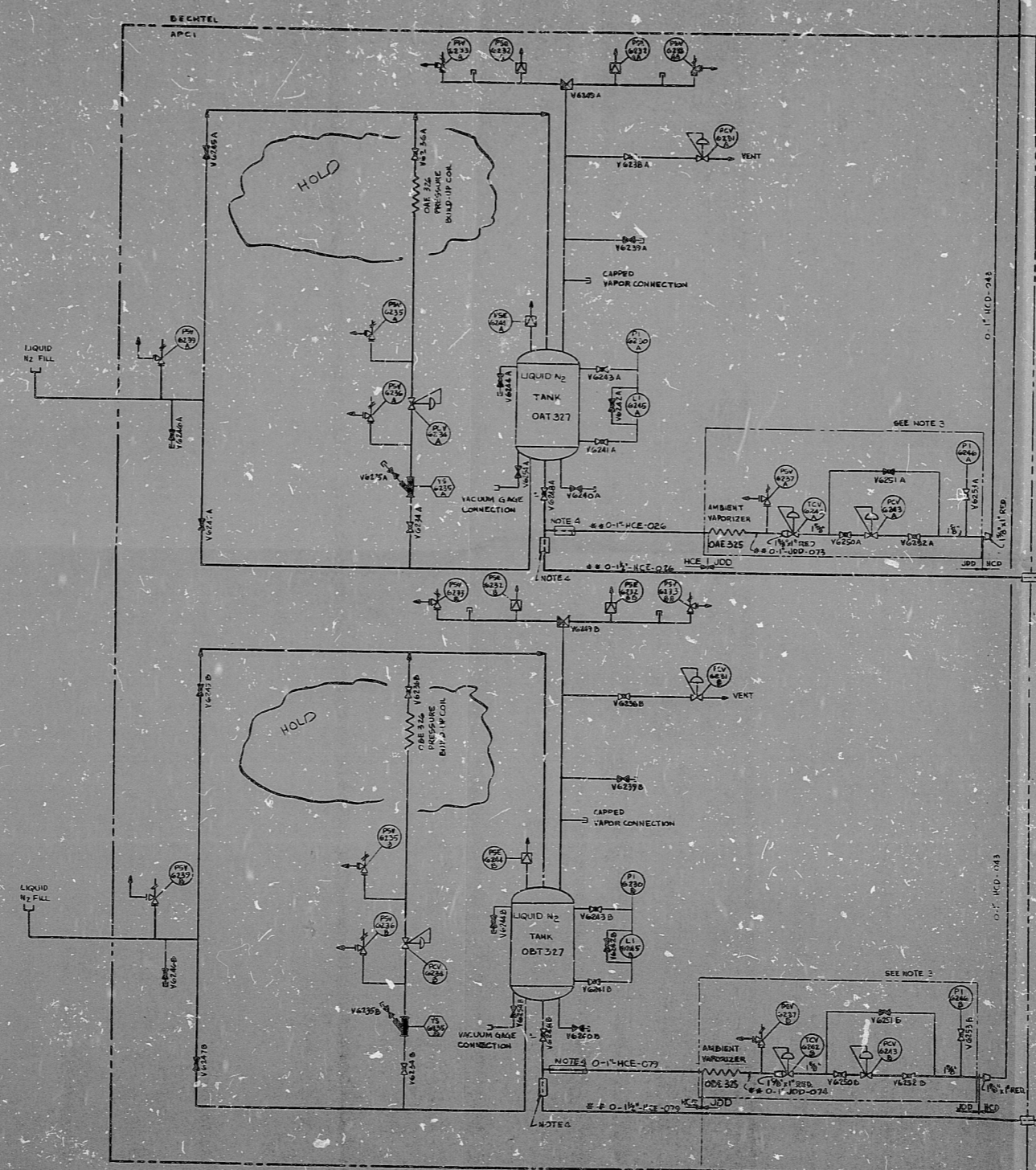


M-71-0

SYSTEM HA

REF. NO.	REFERENCE DRAWING	DATE	APCI NO.
1	EMER. FLOW SHEET	8-7-57	5-7-57
2	CONTAINMENT SYSTEMS	8-7-57	
3	GASEOUS WASTE RECOMMENDATION	8-7-57	
4	CHARCOAL OFF-GAS TREATMENT SYSTEM	8-7-57	

This drawing and the design it covers are the property of DECHTEL. They are to be used only for the purposes intended and in the manner intended. They are not to be reproduced, copied, altered, modified, or used in any way without the written consent of DECHTEL.



- NOTES:
1. LOCATE VALVES AND/OR EQUIPMENT IN A LOW RADIATION AREA.
 2. DECHTEL SUPPLY WITHIN AIR PRODUCTS PACKAGE.
 3. VALVE STATION COMPONENTS PROVIDED ON FIELD BY AIR PRODUCTS.
 4. VACUUM JACKETED PIPING EXTENDS FROM THE OUTLET SIDE OF VALVES V 6248 A & B TO THE INLET SIDE OF THE N2 VAPORIZER (O.E. 324) UN P&ID M-57-1.
 5. M71-0 SUPERSEDES M71-0-4 OF 4. THIS DESIGN PREVIOUSLY APPROVED BY CLIENT UNDER M-71-0 SH. 4 OF 4.

PRO APERTURE CARD

ISSUED FOR CONSTRUCTION	DATE	BY
REVISION	DATE	BY
DECHTEL SAN FRANCISCO PUBLIC SERVICE ELECTRIC AND GAS COMPANY HOPE CREEK GENERATING STATION		
P & I D LIQUID N ₂ FOR PURGE & CONTAINMENT INERTING		
NO. 006	M-71-0	0

RIDS

8307270087

