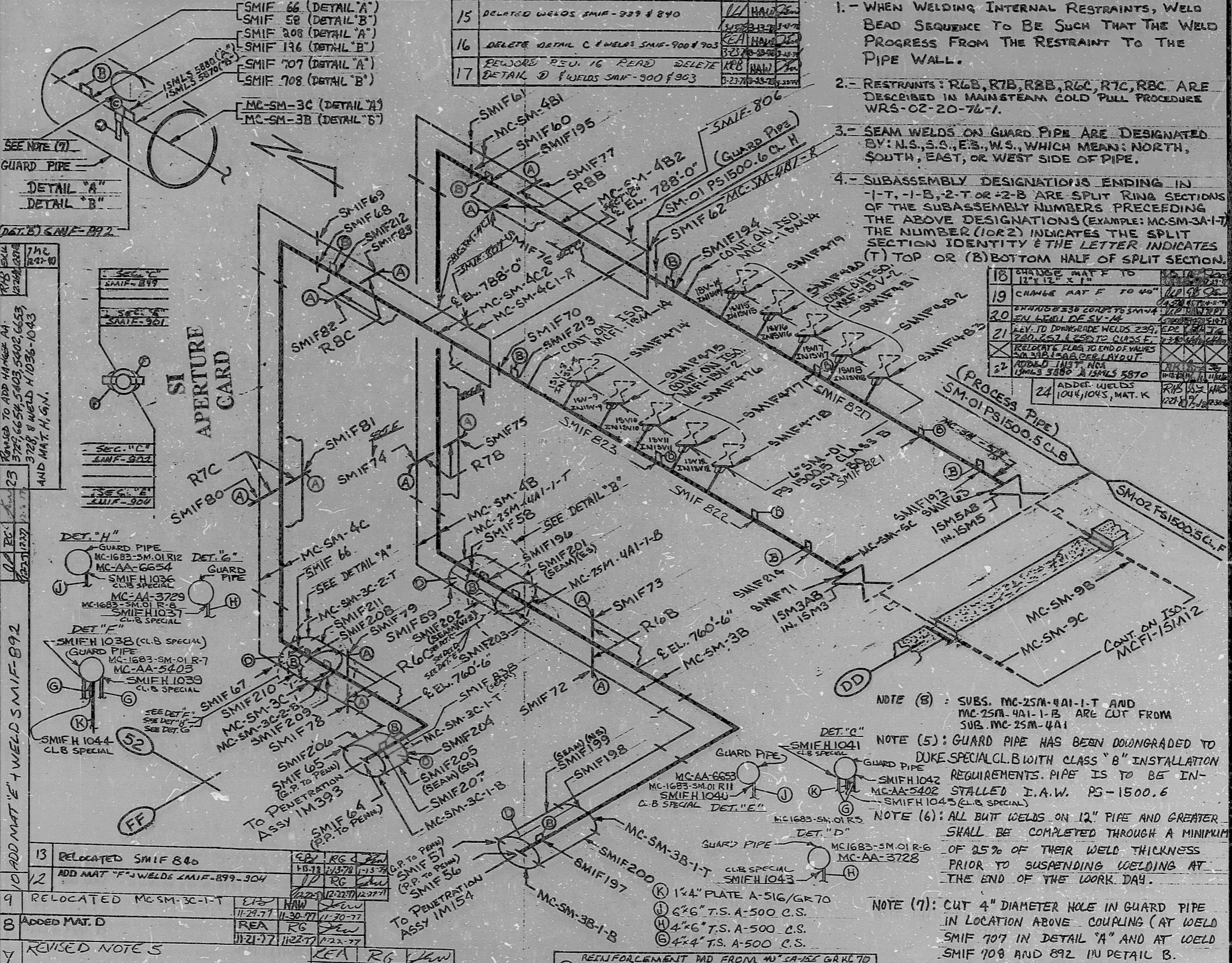


REV. 24  
 BUILDING: DOG HOUSE  
 ISO. NO: MCFI-1SMIO  
 DUKE PIPING CLASS: ASME SECT III CLASS B  
 SYSTEM SYMBOL: SM - MAIN STEAM  
 PIPING SPEC: SM-OI PS 1500.5 & 6 CLEAN LEVEL III  
 DRAWING NO: MCI419-13,20-00 & MCI676-1.2 EL. 750'-0"

PROJECT: McGUIRE  
 DATE: 11-27-77

**NUCLEAR SAFETY RELATED**



14	CHANGE MC-SM-3B-2-T AND MC-SM-3B-2-B TO MC-2SM-4A-1-T AND MC-2SM-4A-1-B RESP. ADD NOTE 8 ADD INFO TO NOTE 7	EB	HAW	DKA
15	RELOCATED WELDS SMIF-839 & 840	EA	HAW	DKA
16	DELETE DETAIL C & WELDS SMIF-900 & 903	EA	HAW	DKA
17	REWORK REV. 16 READ DELETE DETAIL D WELDS SMIF-900 & 903	EA	HAW	DKA

- NOTES**
- 1.- WHEN WELDING INTERNAL RESTRAINTS, WELD BEAD SEQUENCE TO BE SUCH THAT THE WELD PROGRESS FROM THE RESTRAINT TO THE PIPE WALL.
  - 2.- RESTRAINTS: R6B, R7B, R8B, R6C, R7C, R8C ARE DESCRIBED IN MAINSTEAM COLD PULL PROCEDURE WRS-02-20-76-1.
  - 3.- SEAM WELDS ON GUARD PIPE ARE DESIGNATED BY: N.S., S.S., E.S., W.S., WHICH MEAN: NORTH, SOUTH, EAST, OR WEST SIDE OF PIPE.
  - 4.- SUBASSEMBLY DESIGNATIONS ENDING IN -1-T, -1-B, -2-T OR -2-B ARE SPLIT RING SECTIONS OF THE SUBASSEMBLY NUMBERS PRECEDING THE ABOVE DESIGNATIONS (EXAMPLE: MC-SM-3A-1-T) THE NUMBER (1 OR 2) INDICATES THE SPLIT SECTION IDENTITY & THE LETTER INDICATES (T) TOP OR (B) BOTTOM HALF OF SPLIT SECTION.

18	CHANGE MAT F TO 12"x12" S.S.	EA	HAW	DKA
19	CHANGE MAT F TO 40"	EA	HAW	DKA
20	CHANGE 330 CONS TO SMIF 1041	EA	HAW	DKA
21	REV. TO DOWNGRADE WELDS 239, 240, 252 & 253 TO CLASS B	EA	HAW	DKA
22	RELOCATE FLAG TO END OF WELD ON SMIF 1043 SEE LAYOUT	EA	HAW	DKA
23	ADDED INFO, NO 15MIS 5880 & 15MIS 5870	EA	HAW	DKA
24	ADDED WELDS 1041, 1043, MAT. K	EA	HAW	DKA

**FOR INFORMATION ONLY**

REV.	DATE	BY	CHKD	APPR
1	11-21-77	EA	HAW	DKA
2	11-21-77	EA	HAW	DKA
3	11-21-77	EA	HAW	DKA
4	11-21-77	EA	HAW	DKA
5	11-21-77	EA	HAW	DKA
6	11-21-77	EA	HAW	DKA
7	11-21-77	EA	HAW	DKA
8	11-21-77	EA	HAW	DKA
9	11-21-77	EA	HAW	DKA
10	11-21-77	EA	HAW	DKA
11	11-21-77	EA	HAW	DKA
12	11-21-77	EA	HAW	DKA
13	11-21-77	EA	HAW	DKA
14	11-21-77	EA	HAW	DKA
15	11-21-77	EA	HAW	DKA
16	11-21-77	EA	HAW	DKA
17	11-21-77	EA	HAW	DKA
18	11-21-77	EA	HAW	DKA
19	11-21-77	EA	HAW	DKA
20	11-21-77	EA	HAW	DKA
21	11-21-77	EA	HAW	DKA
22	11-21-77	EA	HAW	DKA
23	11-21-77	EA	HAW	DKA
24	11-21-77	EA	HAW	DKA
25	11-21-77	EA	HAW	DKA

11	DELETE WELD SMIF 837	EA	HAW	DKA
12	ADD WELD SMIF-806 & 807 CHANGE GRINNELL SUG	EA	HAW	DKA
13	ADD NOTES 6, 7, 8, DETAILS A, B, WELDS SMIF 707, 708, MAT. "C"	EA	HAW	DKA
14	ADD VALVES & WELDS SMIF 474 - 483 AND CONT. ON MCFI-3V-2 & 15, ADD SO NOTE # 5	EA	HAW	DKA
15	REV. PEN. NO. TO READ IM154	EA	HAW	DKA
16	REL. FOR CONSTRUCTION	EA	HAW	DKA
17	ADD MAT "E" WELDS SMIF-892	EA	HAW	DKA
18	RELOCATED SMIF 840	EA	HAW	DKA
19	ADD MAT "F" WELDS SMIF-899-904	EA	HAW	DKA
20	RELOCATED MC-SM-3C-1-T	EA	HAW	DKA
21	ADDED MAT. D	EA	HAW	DKA
22	REVISED NOTE 5	EA	HAW	DKA
23	ADDED WELDS SMIF 827 THRU 840	EA	HAW	DKA
24	ADDED WELD SMIF 820 THRU 823 AND MAT. B	EA	HAW	DKA

- NOTE (8): SUBS. MC-2SM-4A1-1-T AND MC-2SM-4A1-1-B ARE CUT FROM SUB. MC-2SM-4A1
- NOTE (5): GUARD PIPE HAS BEEN DOWNGRADED TO DUKE SPECIAL CL.B WITH CLASS "B" INSTALLATION REQUIREMENTS. PIPE IS TO BE INSTALLED I.A.W. PS-1500.6
- NOTE (6): ALL BUTT WELDS ON 12" PIPE AND GREATER SHALL BE COMPLETED THROUGH A MINIMUM OF 25% OF THEIR WELD THICKNESS PRIOR TO SUSPENDING WELDING AT THE END OF THE WORK DAY.
- NOTE (7): CUT 4" DIAMETER HOLE IN GUARD PIPE IN LOCATION ABOVE COUPLING (AT WELD SMIF 707 IN DETAIL "A" AND AT WELD SMIF 708 AND 892 IN DETAIL B.
- REINFORCEMENT PAD FROM MC-2A-155 GR70 12x12 WITH 1.000" WALL
- 1"x4" PLATE A-516/GR70  
 6"x6" T.S. A-500 C.S.  
 4"x6" T.S. A-500 C.S.  
 4"x4" T.S. A-500 C.S.
- 2" PIPE SA-106 GRB SCH-80  
 1" S16 GR.70 PLATE  
 3/4" HICPLG. S.W. SA-105 OR(SA-234, WPB), 3000 #
- 1/8" CARBON STEEL ACCESS PLUG  
 6" DIA. BAR STOCK, SA-105, BY GRINNELL
- BILL OF MATERIALS**

8903280371

PDR RIDS

