

VALVE IDENTIFICATION	MARK NUMBER	PIPE SIZE	QUANTITY
V1, V2	V5005-2	10"	2
V121-125, 127-129, 18-20, 921, 922	V5100-A-2	2"	13
V455, 1011, 1345	V5100-A-2	3/4"	29
V1, 2, 23, 25, 27	V5100-A-2	3/4"	17
V3, 7, 9, 12	V5100-A-2	3/4"	10
V4, 6, 138, 927	V5100-A-2	3/4"	2
V1, 2, 23, 25, 27	V5100-A-2	3/4"	17
V1, 2, 23, 25, 27	V5100-A-2	3/4"	17
V1, 2, 23, 25, 27	V5100-A-2	3/4"	17
V1, 2, 23, 25, 27	V5100-A-2	3/4"	17
V1, 2, 23, 25, 27	V5100-A-2	3/4"	17
V1, 2, 23, 25, 27	V5100-A-2	3/4"	17

NOTES:

- INSTALL FLUSHING ORIFICE AFTER INITIAL SYSTEM CLEANING, IF INSTALLED.
- LOCATE CONNECTION CLOSE TO VALVES 2515 MOV/67C A-D
- LOCATE CONNECTION CLOSE TO TANK IF INSTALLED.
- VALVE 2515-RV03 CALLED DURING INITIAL HYDROTEST & TEST FOR TIGHTNESS FOR NORMAL PLANT OPERATION
- IDENTIFYING REDUCER, STRAIGHT SIZE INSTALLED AT TOP OF PIPE RUN
- PLUNGER POT DRAIN
- BIT SYSTEM (CROSS-HATCHED AREA) IS FUNCTIONALLY DELETED, BUT WILL REMAIN ON FLOW DIAGRAM FOR REFERENCE & TO MAINTAIN SPACE ENVELOPE FOR POSSIBLE FUTURE INSTALLATION
- LOCATE ORIFICE VALVE & CONNECTION CLOSE TO RCS PIPING
- CONICAL STRAINERS TO BE REMOVED AFTER INITIAL SYSTEM FLUSH, SPOOL PIECES FOR CONICAL STRAINERS & S/W SPACER RUNS ARE TO BE PROVIDED BY PIPING
- THE CONTROL EQUIPMENT MARK NUMBERS SHALL INCLUDE A PREFIX WHICH IS IDENTICAL TO THE SYSTEM FOR WHICH THE ASSOCIATED EQUIPMENT OR PIPE LINE UNLESS OTHERWISE NOTED
- FLOW RESTRICTOR 2515-PUR 28V5-930
- OVERFLOW FROM COOLANT HEAD TANK INTEGRAL TO PUMP
- FLANGES FOR FLOW RESTRICTOR TO VERIFY FLOW DURING PRE-OPERATIONAL TESTING
- THE WESTINGHOUSE SPIN NUMBER FOR COMPONENTS IS SHOWN IN PARENTHESES
- WESTINGHOUSE CONTROL EQUIPMENT IDENTIFICATION NUMBERS ARE SHOWN IN SQUARES ADJACENT TO BALLOONED MARK NUMBERS WHERE THESE ARE DIFFERENT
- ALL COMPONENTS SUPPLIED BY W UNLESS NOTED OTHERWISE OR LISTED IN S/W VALVE TABLE
- LOOP SEAL TO EXTEND 12" ABOVE & BELOW OVERFLOW NOZZLE IF INSTALLED
- INDICATES NUCLEAR SAFETY RELATED
- IF BIT SYSTEM IS INSTALLED, EACH PIPE REQUIRING HEAT TRACING SHALL HAVE TWO SETS OF TRACINGS ONE POWERED FROM CRANE POWER & THE OTHER FROM PURPLE POWER
- LOCATE V1 & V2 AS CLOSE AS POSSIBLE TO MOV 851A & B RESPECTIVELY
- LOCATE AS CLOSE AS POSSIBLE TO 6" C88 NEAREST RCS
- THIS SYSTEM WILL BE MAINTAINED TO A CLEANNESS LEVEL ACCORDANCE WITH 28V11-62
- EE DENOTES ELECTRICAL HEAT TRACING
- CONNECTION ON PUMP SUCTION LINE TO BE USED FOR ADDING PRESSURE INDICATORS TO MONITOR STRAINER PERFORMANCE

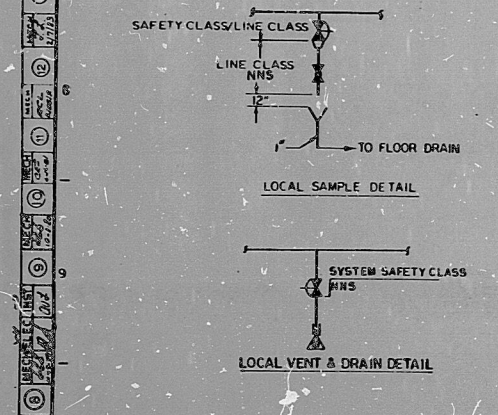
LEGEND

FC FAIL CLOSED  
RWST REFUELING WATER STORAGE TANK

REFERENCE DRAWINGS  
SAFETY INJECTION PIPING  
GASEOUS NITROGEN SYSTEM  
PRIMARY GRADE WATER PIPING  
SCHEDULE OF PIPING PENETRATIONS

SAMPLE PIPING  
NUCLEAR VENT & DRAIN PIPING  
CONTAINMENT DEPRESSURIZATION PIPING  
REACTOR COOLANT PIPING  
RESIDUAL HEAT REMOVAL PIPING  
CHEMICAL & VOLUME CONTROL PIPING

RM-87A,B  
RM-710  
RM-112A  
RV-1A  
RM-95A  
RM-95A,B  
RM-75A  
RM-76A  
RM-79D



NO.	DATE	DESCRIPTION	BY	CHKD.
1	12/21/84	ISSUED FOR PRODUCTION	...	...
2	12/21/84	REVISION	...	...
3	12/21/84	REVISION	...	...
4	12/21/84	REVISION	...	...
5	12/21/84	REVISION	...	...
6	12/21/84	REVISION	...	...
7	12/21/84	REVISION	...	...
8	12/21/84	REVISION	...	...
9	12/21/84	REVISION	...	...
10	12/21/84	REVISION	...	...
11	12/21/84	REVISION	...	...
12	12/21/84	REVISION	...	...
13	12/21/84	REVISION	...	...
14	12/21/84	REVISION	...	...
15	12/21/84	REVISION	...	...
16	12/21/84	REVISION	...	...
17	12/21/84	REVISION	...	...
18	12/21/84	REVISION	...	...
19	12/21/84	REVISION	...	...
20	12/21/84	REVISION	...	...

DUQUESNE LIGHT COMPANY  
SAFETY INJECTION PIPING

BEAVER VALLEY POWER STATION UNIT NO. 2  
AA No. 10080-RM-87A

S&W DWG. NO. 12241-RM-87A-13A

841190542

PDR RIDS

8411190542

