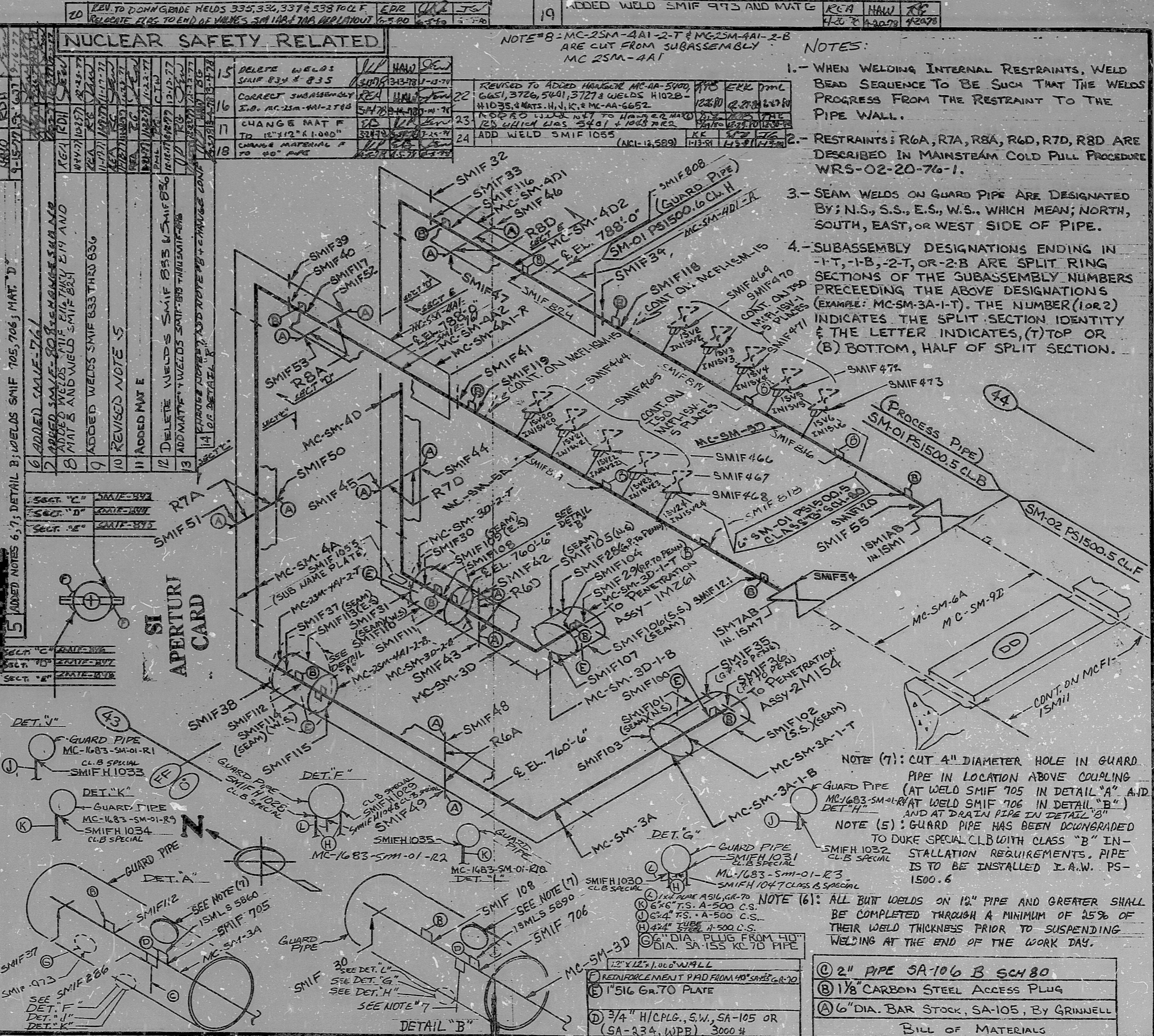


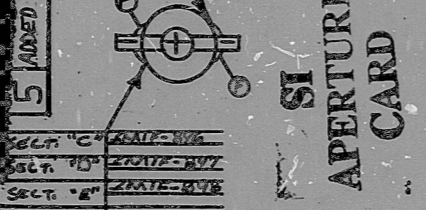
REV. 24	BUILDING: DOG HOUSE 8	ISO. NO.: MCFI-15M9	DUKE PIPING CLASS: ASME SECT III: CLASS B
		SYSTEM SYMBOL: SM - MAIN STEAM	PIPING SPEC.: SM-01 PS 1500.5 & 6 CLEAN: LEVEL III
		DRAWING NO.: MC1419-73.20-00 & MC1676-1.2 EL. 750'-0"	
PROJECT: McQUIRE			
NO.	REVISION	DATE	DESCRIPTION
1	ADD DETAIL "A"	(SMIF 286)	
2	ADD WELDS SMIF 355 AND 356, REV POSITION OF CL CHANGE		
3	ADD WELDS SMIF 355 AND 356, REV POSITION OF CL CHANGE		
4	ADDED CONT. ON MCFI-15M9		
5	ADDED INST. NO. 15M9L5 5860		
6	ADDED CONT. ON MCFI-15M9		
7	ADDED WELDS SMIF 473		
8	ADDED WELDS SMIF 474		
9	ADDED WELDS SMIF 475		
10	ADDED WELDS SMIF 476		
11	ADDED WELDS SMIF 477		
12	ADDED WELDS SMIF 478		
13	ADDED WELDS SMIF 479		
14	ADDED WELDS SMIF 480		
15	ADDED WELDS SMIF 481		
16	ADDED WELDS SMIF 482		
17	ADDED WELDS SMIF 483		
18	ADDED WELDS SMIF 484		
19	ADDED WELDS SMIF 485		
20	ADDED WELDS SMIF 486		
21	ADDED WELDS SMIF 487		
22	ADDED WELDS SMIF 488		
23	ADDED WELDS SMIF 489		
24	ADDED WELDS SMIF 490		



NOTE #8 - MC-25M-4A1-2-T & MC-25M-4A1-2-B ARE CUT FROM SUBASSEMBLY MC-25M-4A1

NOTE #9 - MC-25M-4A1-2-T & MC-25M-4A1-2-B ARE CUT FROM SUBASSEMBLY MC-25M-4A1

- NOTES:
1. WHEN WELDING INTERNAL RESTRAINTS, WELD BEAD SEQUENCE TO BE SUCH THAT THE WELDS PROGRESS FROM THE RESTRAINT TO THE PIPE WALL.
 2. RESTRAINTS: R6A, R7A, R8A, R6D, R7D, R8D ARE DESCRIBED IN MAINSTEAM COLD PULL PROCEDURE WRS-02-20-76-1.
 3. SEAM WELDS ON GUARD PIPE ARE DESIGNATED BY; N.S., S.S., E.S., W.S., WHICH MEAN; NORTH, SOUTH, EAST, OR WEST SIDE OF PIPE.
 4. SUBASSEMBLY DESIGNATIONS ENDING IN -1-T, -1-B, -2-T, OR -2-B ARE SPLIT RING SECTIONS OF THE SUBASSEMBLY NUMBERS PRECEEDING THE ABOVE DESIGNATIONS (EXAMPLE: MC-SM-3A-1-T). THE NUMBER (1 OR 2) INDICATES THE SPLIT SECTION IDENTITY & THE LETTER INDICATES, (T) TOP OR (B) BOTTOM, HALF OF SPLIT SECTION.



NOTE (7): CUT 4" DIAMETER HOLE IN GUARD PIPE IN LOCATION ABOVE COUPLING (AT WELD SMIF 705 IN DETAIL "A" AND MC1683-SM-01-R1 AT WELD SMIF 706 IN DETAIL "B") AND AT DRAIN PIPE IN DETAIL "C"

NOTE (5): GUARD PIPE HAS BEEN DOWNGRADED TO DUKE SPECIAL CL.B WITH CLASS "B" INSTALLATION REQUIREMENTS. PIPE IS TO BE INSTALLED I.A.W. PS-1500.6

NOTE (6): ALL BUT WELDS ON 12" PIPE AND GREATER SHALL BE COMPLETED THROUGH A MINIMUM OF 25% OF THEIR WELD THICKNESS PRIOR TO SUSPENDING WELDING AT THE END OF THE WORK DAY.

①	2" PIPE SA-106 B SCH 80
②	1 1/8" CARBON STEEL ACCESS PLUG
③	6" DIA. BAR STOCK, SA-105, BY GRINNELL

BILL OF MATERIALS

DUNCAN-PARNELL, INC., CHARLOTTE 778

8903280368

PDR RIDS

