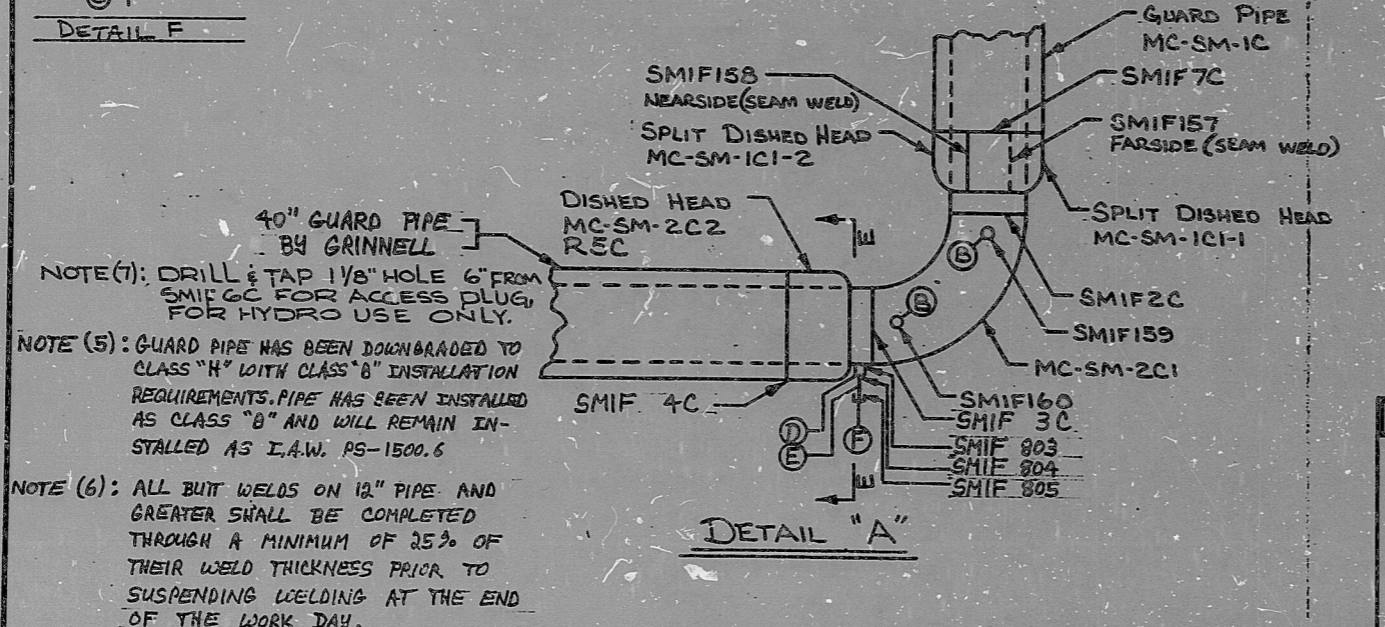
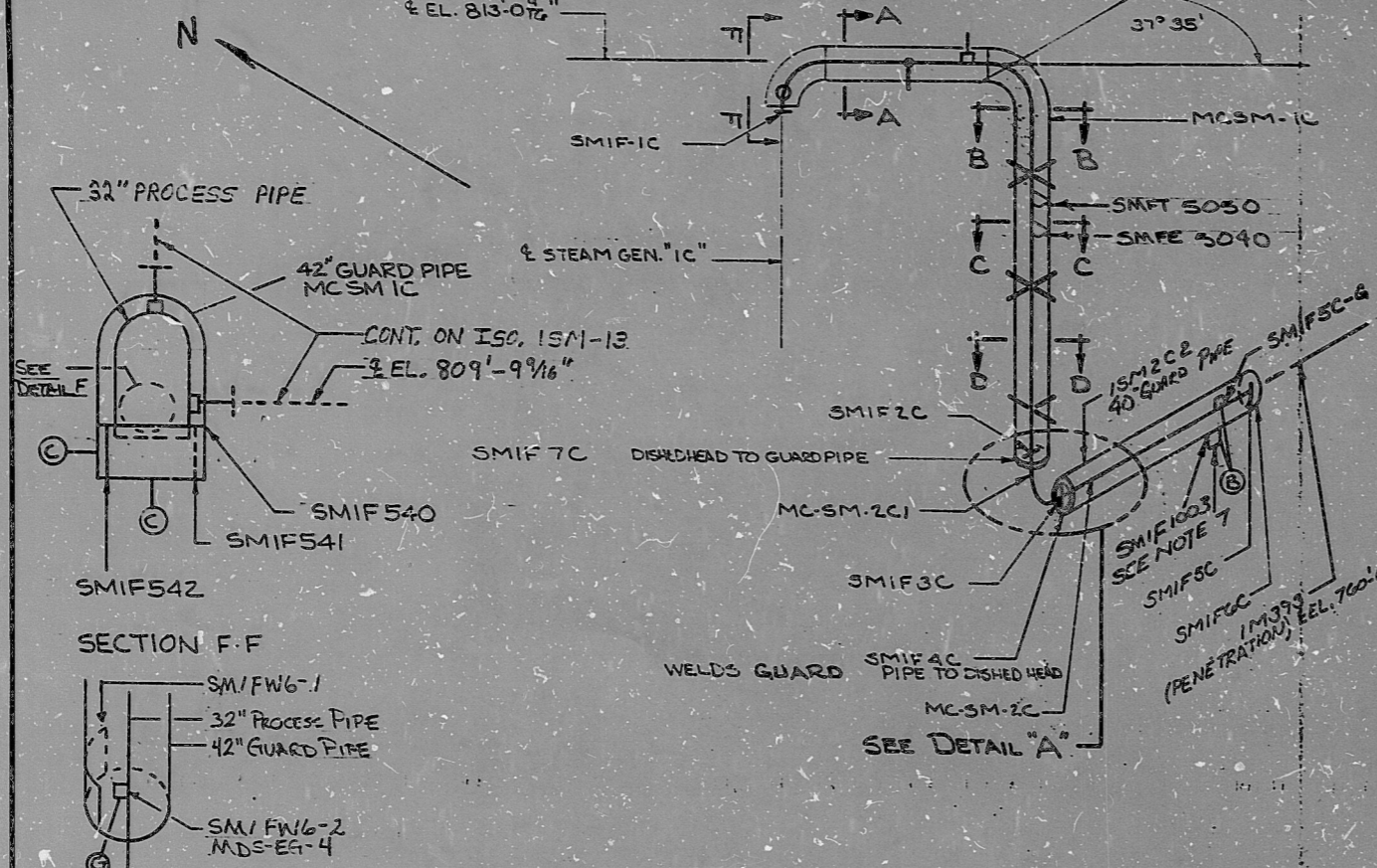


7	ADDED NOTE (6)	HAW	RDH	WSD	NA
8	ADDED MAT'S D,E,F AND WELDS SMIF 803 THRU 805	HAW	RDH	WSD	NA

10	REVISED TO ADD INST. TAPS SMIF 5050 AND SMIF 5040 PER LAYOUT	HAW	RDH	WSD	NA
11	ADD DETAIL F AND (E) WR 500360	HAW	RDH	WSD	NA



NOTE (1): DRILL & TAP 1/8\"/>

NOTE (5): GUARD PIPE HAS BEEN DOWNGRADED TO CLASS \"H\" WITH CLASS \"B\" INSTALLATION REQUIREMENTS. PIPE HAS BEEN INSTALLED AS CLASS \"B\" AND WILL REMAIN INSTALLED AS I.A.W. PS-1500.6

NOTE (6): ALL BUT WELDS ON 12\"/>

① - 6\"/>

② - 1/8\"/>

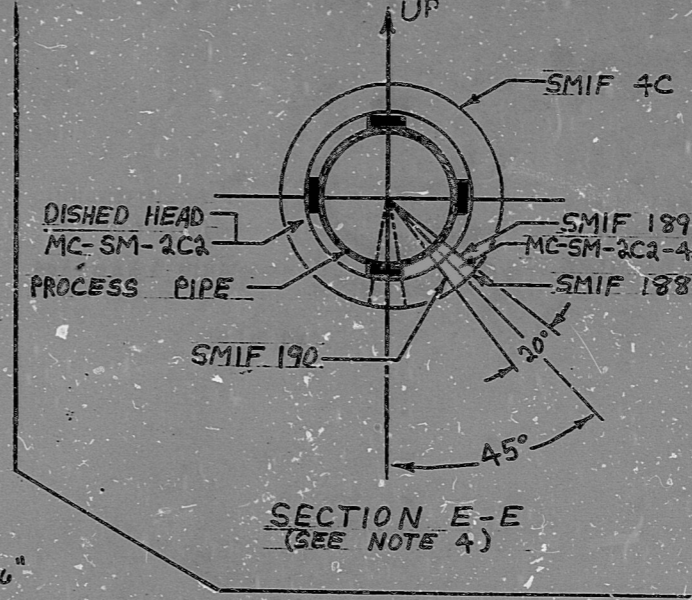
③ SA-155 GR70 C.S. PLATE SUPPLIED BY GRINNELL FOR GUARD PIPE EXTENSION

④ 2\"/>

⑤ 2\"/>

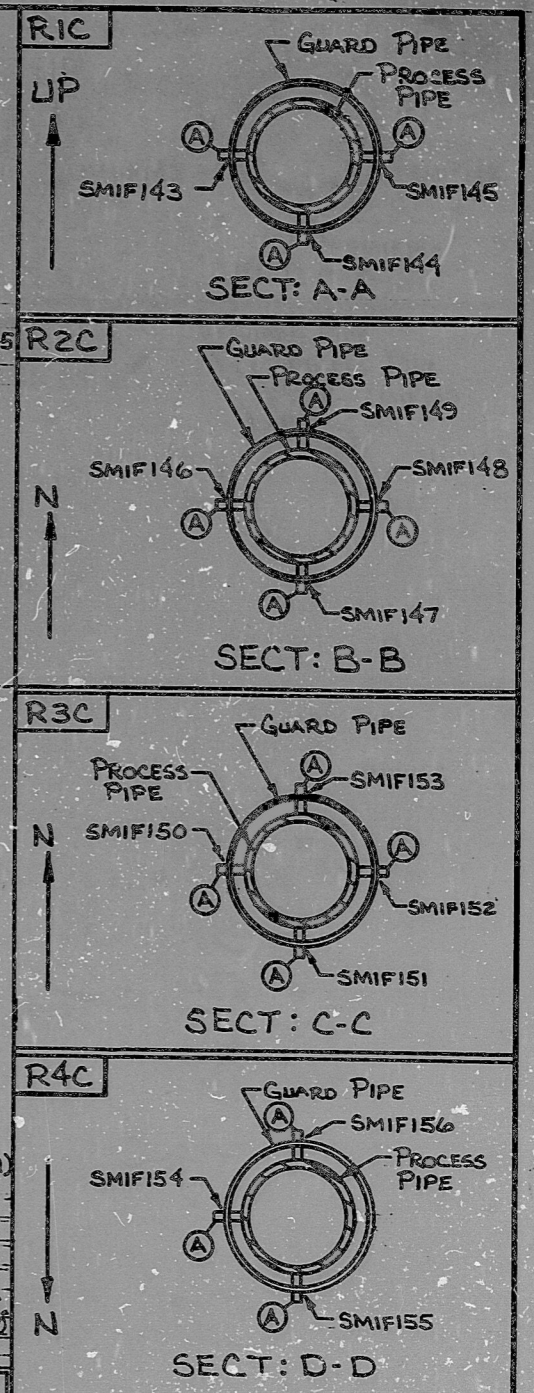
⑥ 1/8\"/>

9	ADD SMIF 1003 & NOTE 7	HAW	RDH	WSD	NA
6	ADDED MAT. ③ AND WELD SMIF 540 THRU SMIF 542	HAW	RDH	WSD	NA
5	ADD NOTE # 5, ZONE	HAW	RDH	WSD	NA



**NOTES:**

1. WHEN WELDING INTERNAL RESTRAINTS (A), WELD BEAD SEQUENCE TO BE SUCH THAT THE WELD PROGRESS FROM THE RESTRAINT TO THE PIPE WALL.
2. RESTRAINTS; R1C, R2C, R3C, R4C, & R5C ARE DESCRIBED IN MAINSTEAM COLD PULL PROCEDURE WRS-02-20-76-1.
3. DOCUMENTATION FOR ACCESS PLUG WELDS SHALL BE FILED WITH THE ADJACENT PROCESS PIPE WELD.
4. A 20° PORTION OF THE DISHED HEAD (MC-SM-2C2) WILL BE REMOVED FOR FIT-UP PURPOSES (PIE SHAPED SECTION TO BE REMOVED AND LABELED MC-SM-2C2-45). UPON FIT-UP, THE REMOVED SECTION WILL BE ROTATED APPROXIMATELY 45° TO POSITION THIS AREA BETWEEN THE TWO SUPPORT PADS ON THE LOWER AND RIGHT SIDES. REMOVED SECTION WILL BE RE-FIT AND WELDED I.A.W. PROCEDURE M-4.



NUCLEAR SAFETY RELATED		PROJECT		MCGUIRE	
DUKE PIPING CLASS: B		PS1500.5-6		FOR INFORMATION ONLY	
SYSTEM TITLE & SYMBOL: SM - MAIN STEAM		BUILDING: REACTOR ZONE R-6		101	
NO.		REVISION		SI APERTURE CARD	
4	ADDED SECTION F-F	HAW	RDH	WSD	NA
3	ADDED SECTION \"E\" AND NOTE 4	HAW	RDH	WSD	NA
2	REVISED TO ADD DETAILS & SECTS.	HKS	HEB	WSD	NA
1	ADD WELD SMIF 7C	RE	RDH	WSD	NA
0	RELEASED FOR CONST.	RFR	LT	WSD	NA
DATE		DATE	DATE	DATE	DATE
APPROVED		APPROVED		APPROVED	
SYSTEM ISO. NO.		REV NO.		LAST WELD NO.	
MCF1-SM-60		11		2	
DRAWING NO.		MC 1625-1		MC 1419-13.20-00	

NDE REQUIREMENTS

REFER TO PROCESS CONTROL INFORMATION OF FIELD WELDS AND/OR SUBASSEMBLIES FOR NDE REQUIREMENTS

8903280367

PDR RIDS

