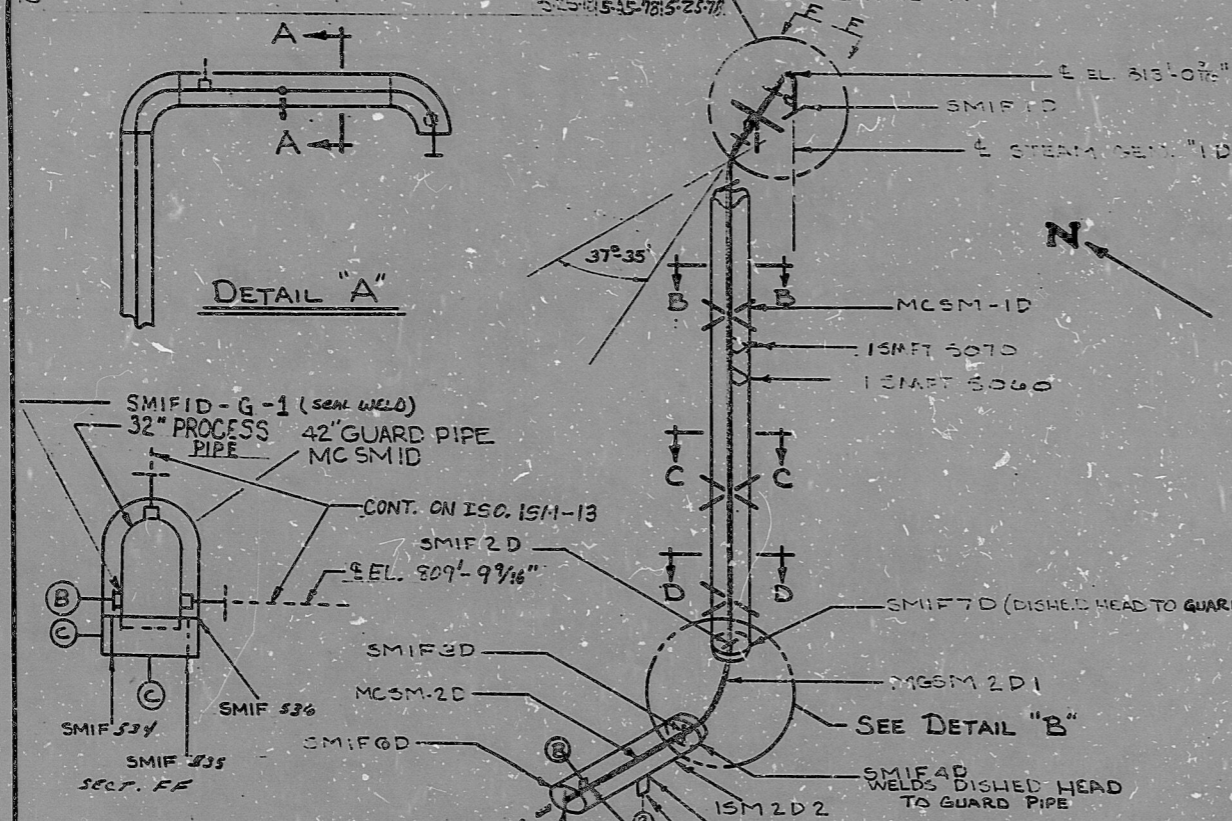


9 ADDED MAT'S DEF AND WELDS SMIF 797 THRU 799
 10 ADD SMIF 1001 & NOTE 7



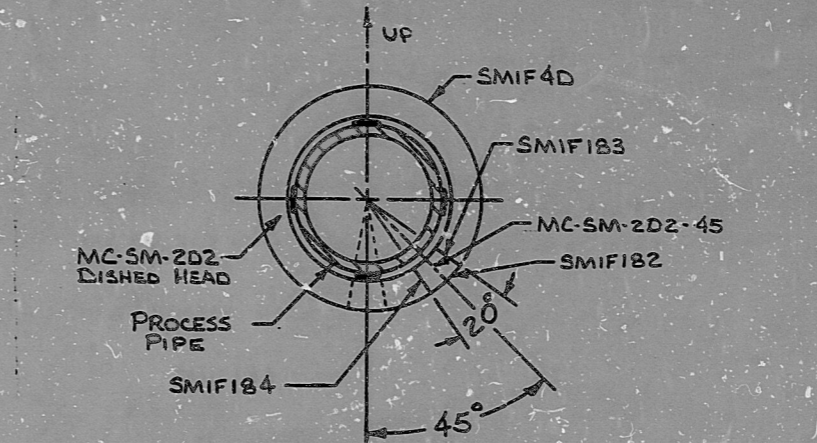
SMIF 1001 SEE NOTE 7
 SMIF 534
 SMIF 535
 SMIF 536
 SMIF 537
 SMIF 538
 SMIF 539
 SMIF 540
 SMIF 541
 SMIF 542
 SMIF 543
 SMIF 544
 SMIF 545
 SMIF 546
 SMIF 547
 SMIF 548
 SMIF 549
 SMIF 550
 SMIF 551
 SMIF 552
 SMIF 553
 SMIF 554
 SMIF 555
 SMIF 556
 SMIF 557
 SMIF 558
 SMIF 559
 SMIF 560
 SMIF 561
 SMIF 562
 SMIF 563
 SMIF 564
 SMIF 565
 SMIF 566
 SMIF 567
 SMIF 568
 SMIF 569
 SMIF 570
 SMIF 571
 SMIF 572
 SMIF 573
 SMIF 574
 SMIF 575
 SMIF 576
 SMIF 577
 SMIF 578
 SMIF 579
 SMIF 580
 SMIF 581
 SMIF 582
 SMIF 583
 SMIF 584
 SMIF 585
 SMIF 586
 SMIF 587
 SMIF 588
 SMIF 589
 SMIF 590
 SMIF 591
 SMIF 592
 SMIF 593
 SMIF 594
 SMIF 595
 SMIF 596
 SMIF 597
 SMIF 598
 SMIF 599
 SMIF 600

- NOTES:
- DRILL & TAP 1/8" HOLE 6" FROM SMIF 60, FOR ACCESS PLUG FOR HYDRO USE ONLY.
 - WHEN WELDING INTERNAL RESTRAINTS (A), WELD BEAD SEQUENCE TO BE SUCH THAT THE WELD PROGRESS FROM THE RESTRAINT TO THE PIPE WALL.
 - RESTRAINTS: RID, R2D, R3D, R4D & R5D ARE DESCRIBED IN MAINSTEAM COLD PULL PROCEDURE WRS-02-20-76-1
 - DOCUMENTATION FOR ACCESS PLUG WELDS SHALL BE FILED WITH THE ADJACENT PROCESS PIPE WELD.
 - A 20° PORTION OF THE DISHED HEAD (MC-SM-2D2) WILL BE REMOVED FOR FIT-UP PURPOSES (PIE SHAPED SECTION TO BE REMOVED & LABELED MC-SM-2D2-45). UPON FIT-UP THE REMOVED SECTION WILL BE ROTATED APPROXIMATELY 45° TO POSITION THIS AREA BETWEEN THE TWO SUPPORT PADS ON THE LOWER & RIGHT SIDES. REMOVED SECTION WILL BE RE-FIT & WELD I.A.W. PROCEDURE M-4.
 - GUARD PIPE HAS BEEN DOWNGRADED TO CLASS "N" WITH CLASS "B" INSTALLATION REQUIREMENTS. PIPE HAS BEEN INSTALLED AS CLASS "B" AND WILL REMAIN INSTALLED AS I.A.W. PS-1500.6
 - ALL BUT WELDS ON 12" PIPE AND GREATER SHALL BE COMPLETED THROUGH A MINIMUM OF 25% OF THEIR WELD THICKNESS PRIOR TO SUSPENDING WELDING AT THE END OF THE WORK DAY.

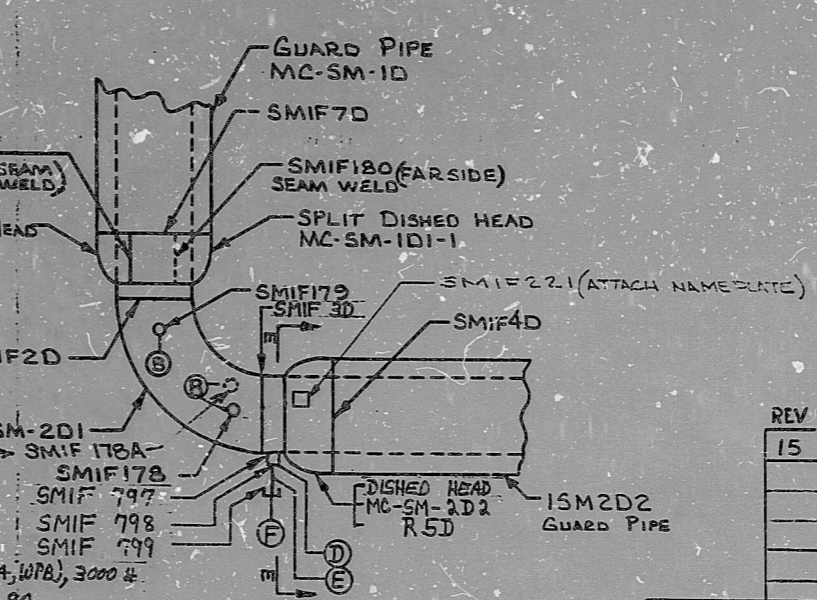
8	ADDED NOTE 6	HALO	RDA	JW	NA
7	ADDED MAT. © AND WELDS SMIF 534 THRU SMIF 536	9-15-77	9-15-77	JW	NA
6	ADDED NOTE # 5, ZONE	7-12-77	7-12-77	JW	NA
5	ADDED SECTION F-F	1-5-77	1-5-77	JW	NA

INSERVICE INSPECTION

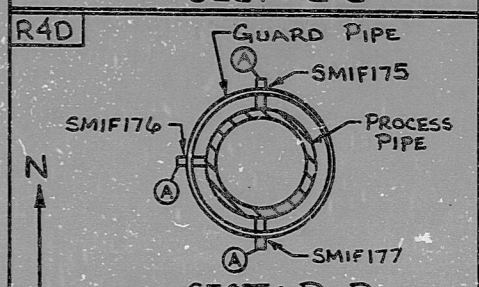
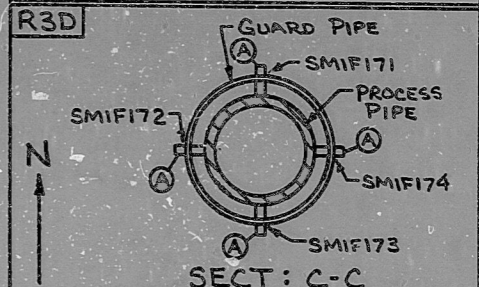
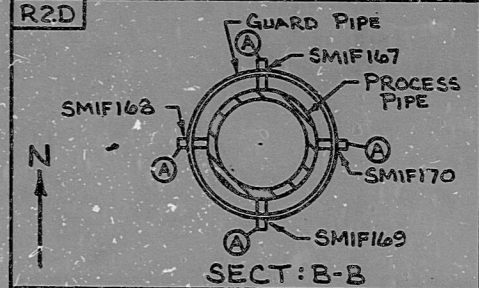
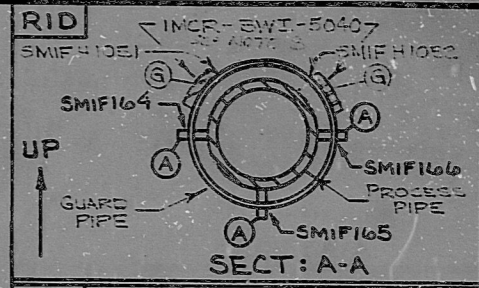
11	REVISE TO ADD IN SERVICE INSPECTION AND SGT0 PER LAYOUT.	6-3-80	4/2/80	HKS
12	ADDED HANGERS INCR-SWT-5040, MATG AND WELDS H10E1, H10E2	7-1-81	6-2-81	HKS
13	ADDED WELDS	11-2-81	11-2-81	HKS
14	ADDED WELD SMIF 175E1 726SS PL-N	3-23-84	2-28-84	HKS



SECT: E-E
 SEE NOTE #4



DETAIL "B"



REV	15	ADDED GAMMA FLAG TO PROCESS PIPE AND SEAL WELD SMIF 10-G-1	JW	3-23-84	3-23-84
-----	----	--	----	---------	---------

- ① 2 1/2" x 5 1/2" PL. A-516/GR 70
- ② 2" H/CALG., S.W., SA-105 OR (SA-334, WPB), 3000 #
- ③ 2" PIPE, SA-106, GRADE B, SCH. 80
- ④ 2" PIPE CAP, S.W., SA-105 OR (SA-334, WPB), 3000 #

- ⑤ SA-155 GR 70 C.S. PLATE SUPPLIED BY GRINNELL FOR GUARD PIPE EXTENSION
- ⑥ 1 1/8" CARBON STEEL ACCESS PLUG BY GRINNELL
- ⑦ 6" DIA. BAR STOCK, SA-105 BY GRINNELL

NDE REQUIREMENTS

REFER TO PROCESS CONTROL INFORMATION OF FIELD WELDS AND/OR SUBASSEMBLIES FOR NDE REQUIREMENTS

NUCLEAR SAFETY RELATED

PROJECT MC GUIRE SI APERTURE CARD

DUKE PIPING CLASS: B PS-1500.5 & .6
 SYSTEM TITLE & SYMBOL: SM MAIN STEAM
 BUILDING: REACTOR ZONE R-6

NO.	REVISION	ORIG. DATE	CHKD. DATE	MECH. DATE	Q.A. DATE	DRAWING NO.	SYSTEM ISO. NO.	REV NO.
4	ADD FIELD WELD SMIF 221	11-23-76	HKS	11-23-76	11-23-76	MC-1625.1	MC-1119-15	15
3	ADDED DETAILS, SECTIONS & NOTES	10-27-76	HKS	10-27-76	10-27-76	MC-1625.1	MC-1119-15	15
2	ALL WELDS SMIF 7D	4-15-76	HKS	4-15-76	4-15-76	MC-1625.1	MC-1119-15	15
1	CHANGE DESIGN (MILL)	1-8-76	HKS	1-8-76	1-8-76	MC-1625.1	MC-1119-15	15
0	RELEASED FOR CONSTRUCTION	10-6-75	HKS	10-6-75	10-6-75	MC-1625.1	MC-1119-15	15

8903280359

PDR RIDS

