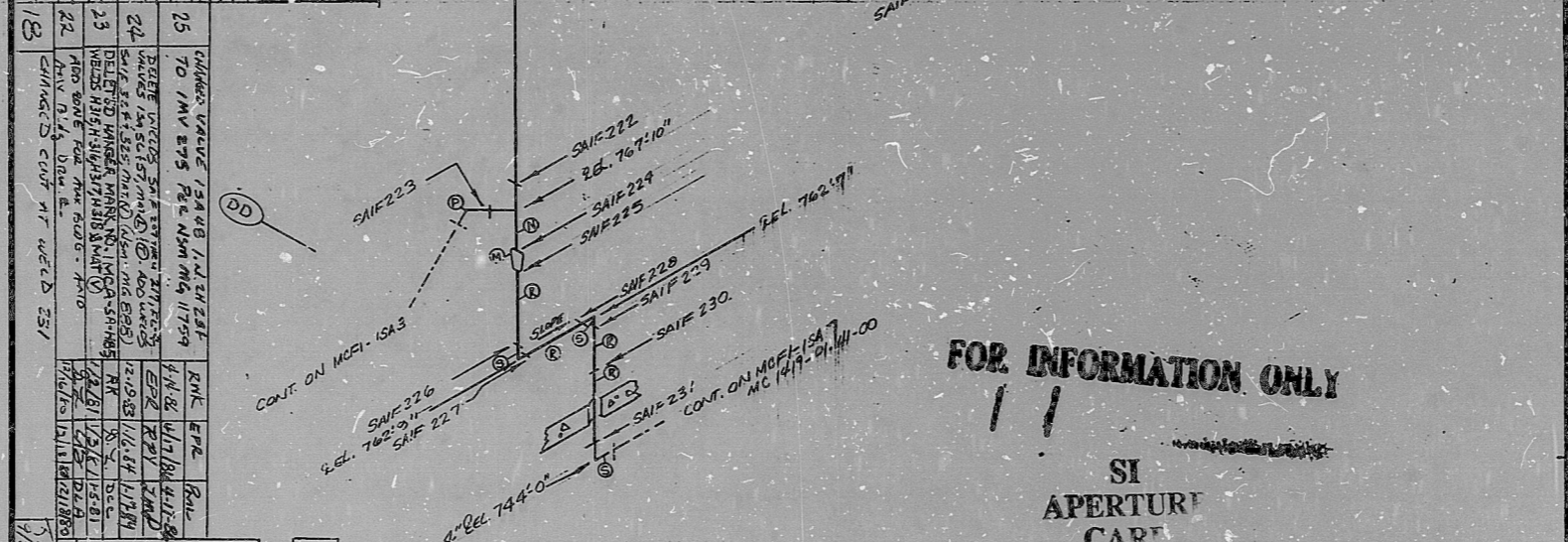
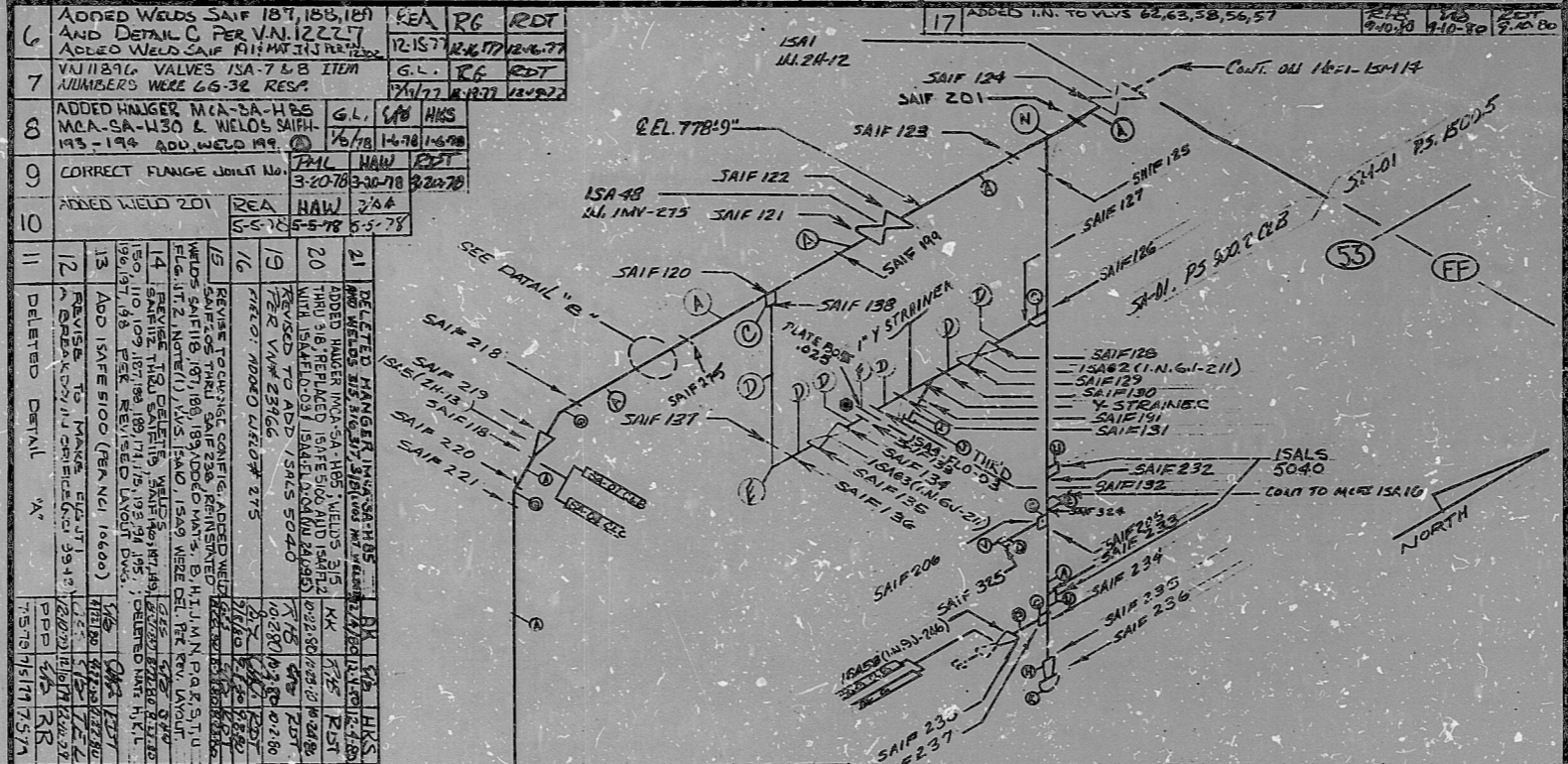


5	REVISED TO DELETE DUPLICATED WELD SAIF 109	FROM 11/9/77	BY 11/9/77	CHKD 11/9/77	INSERVICE INSPECTION	REV. 25
4	DELETE MAT G + WELD SAIF-148 PER V.M. 11771	11/9/77	11/9/77	11/9/77	ISC NO: MCF-ISA4	BUILDING: REACTOR/ANX
3	ADDED DETAILS A AND B, WELDS SAIF 172 THRU SAIF 176, MAT (H)	11-7-77	11-7-77	11-7-77	DUKE PIPING CLASS: ASME SECTION III CL.B/C	EQUIP: SAIF
2	DELETE WELD SAIF 111	6-27-77	6-27-77	6-27-77	SYSTEM SYMBOL: MAIN STEAM SUPPLY FOR AUXILIARY EQUIPMENT	
1	ADDED WELDS SAIF 146 THRU 150 - CONF CHANGE PER V.M. 11569	11-3-77	11-3-77	11-3-77	PIPING SPEC: SA-21, PS 300.2 SA-04, PS 300.3	
0	RELEASE FOR CONSTRUCTION	8-2-77	8-2-77	8-2-77	DRAWING NO.: MD-MD-13, 20-00, 20-02	
NO	REVISION QA CONDITION I	ORIG. CHKD. DATE	APPR. DATE	DATE	PROJECT: MCF-ISA4	



FOR INFORMATION ONLY

SI APERTURE CAP

ITEM NO	SIZE	DESC	QTY	UNIT	REMARKS
1	1"	PIPE CAP	3000#	FSSW	SA-105, SA-234 WPB
2	3/4"	PIPE CAP	3000#	FSSW	SA-105, SA-234 WPB
3	4"	90° ELL	SCH 80	SMLS / EFW	SA-106 B
4	4"	PIPE	SCH 80	SMLS / EFW	SA-106 B
5	6"	45° ELL	SCH 80	SMLS / EFW	SA-234 WPB
6	6"	90° ELL	SCH 80	SMLS / EFW	SA-234 WPB
7	6"	TEE	SCH 80	SMLS / EFW	SA-234 WPB
8	6" X 4"	CON. RED.	SCH 80	SMLS / EFW	SA-234 WPB
9	3"	CAP	SCH 80	SMLS / EFW	SA-234 WPB
10	1/2"	PIPE CAP	3000#	FSSW	SA-105, SA-234 WPB
11	1/2"	PIPE	SCH 80	SMLS / EFW	SA-106 GRB
12	6" X 3"	CON. RED.	SCH 80	SMLS / EFW	SA-234 WPB
13	6"	45° ELL	SCH 80	SMLS / EFW	SA-234 WPB
14	1"	SH. FLG. PL.	1500#	CONTR. DRAIN STRIPS	SA-105
15	1"	PIPE	3000#	SA-105	SA-105
16	1"	PIPE	3000#	SA-106 B	SA-106 B
17	1"	PIPE	3000#	SA-234 WPB	SA-234 WPB
18	1"	PIPE	3000#	SA-234 WPB	SA-234 WPB
19	6"	PIPE	SCH 80	SMLS / EFW	SA-106 B
20	6"	PIPE	SCH 80	SMLS / EFW	SA-106 B

BILL OF MATERIAL

NOTES

① - CONTINUOUS DRAIN ORIFICES

* CONSTRUCT I.A.W. MCG-58-1A

DUNCAN-PARHILL, INC. CHARLOTTE 677

8903280353

PDR RIDS

