

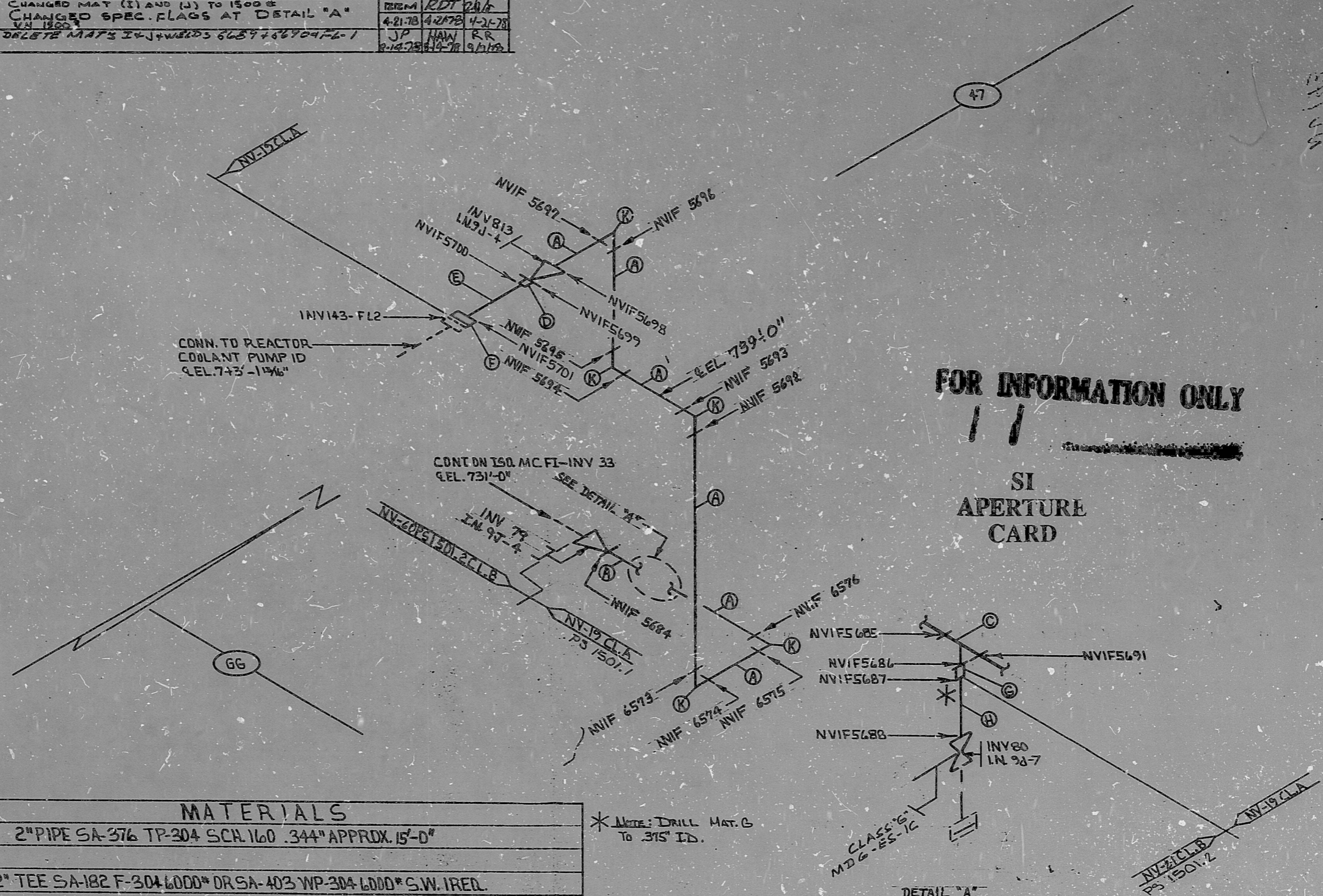
INSERVICE INSPECT 100W

REV. 7
 ISO. NO.: MCFI-INV-143
 DUKE PIPING CLASS: ASME SECTION III CL-A&B
 SYSTEM SYMBOL: CHEMICAL & VOLUME CONTROL
 PIPING SPEC.: (NV-19 PS1501.1) (NV-21 PS 1501.2)
 DRAWING NO.: MC-1414-22.20-00.01; 22-00
 PROJECT: MCGUIRE
 NUCLEAR SAFETY RELATED

NO.	REVISION	ORIG. CHKD. APPR. DATE	DATE
4	ADD EL. 739'-0" PER V.N. #14025		
3	LAYOUT: INV143-FL1 WAS INV143-FL1		
2	DELETED MAT. B, INVP 1085, INVP 1086, INVP 1087, INVP 1088, ADDED WELDS NVIF 6573 THRU NVIF 6576, MAT. K (PER V.N. 14, 437)		
1	ADDED NOTE FOR MAT G		
0	REL. FOR CONST. PER V.N. (11167)		

REV.	DESCRIPTION	BY	DATE
5	FLOW DIA. SEC NO. CHANGE AT VALVE INV 79 & ABOVE. INV 80.	GL, HAW	7/16/78
6	CHANGED MAT (I) AND (J) TO 1500 & CHANGED SPEC. FLAGS AT DETAIL "A"	TRDM, RDT	4-21-78
7	DELETE MATS I & J + WELDS 6639 + 6640 + FL-1	JP, HAW, RR	4-21-78

MATERIALS	
(A)	2" PIPE SA-376 TP-304 SCH. 160 .344" APPROX. 15'-0"
(C)	2" TEE SA-182 F-304 6000* DR SA-403 WP-304 6000* S.W. IRED.
(D)	2" X 1 1/2" RED. INSERT SA-182 F-304 6000* DR SA-403 WP-304 6000* S.W. IRED.
(E)	1 1/2" PIPE SA-376 TP-304 SCH. 160 .281" APPROX. 1'-0"
(F)	1 1/2" FLG SA-182 F-316 S.W. R.F. 1500* IRED.
(G)	2" X 3/4" RED. INSERT SA-182 F-304 6000* DR SA-403 WP-304 6000* S.W. IRED.
(I)	3/4" PIPE SA-376 TP-304 SCH. 160 .219" APPROX. 2'-0"
(K)	2" 90° ELL SA-182, F-304 OR SA-403 WP-304 6000* 5' REQD



FOR INFORMATION ONLY
 SI
 APERTURE
 CARD

LAST FLANGED JOINT NO. USED 2

8903280322

PDR RIDS

