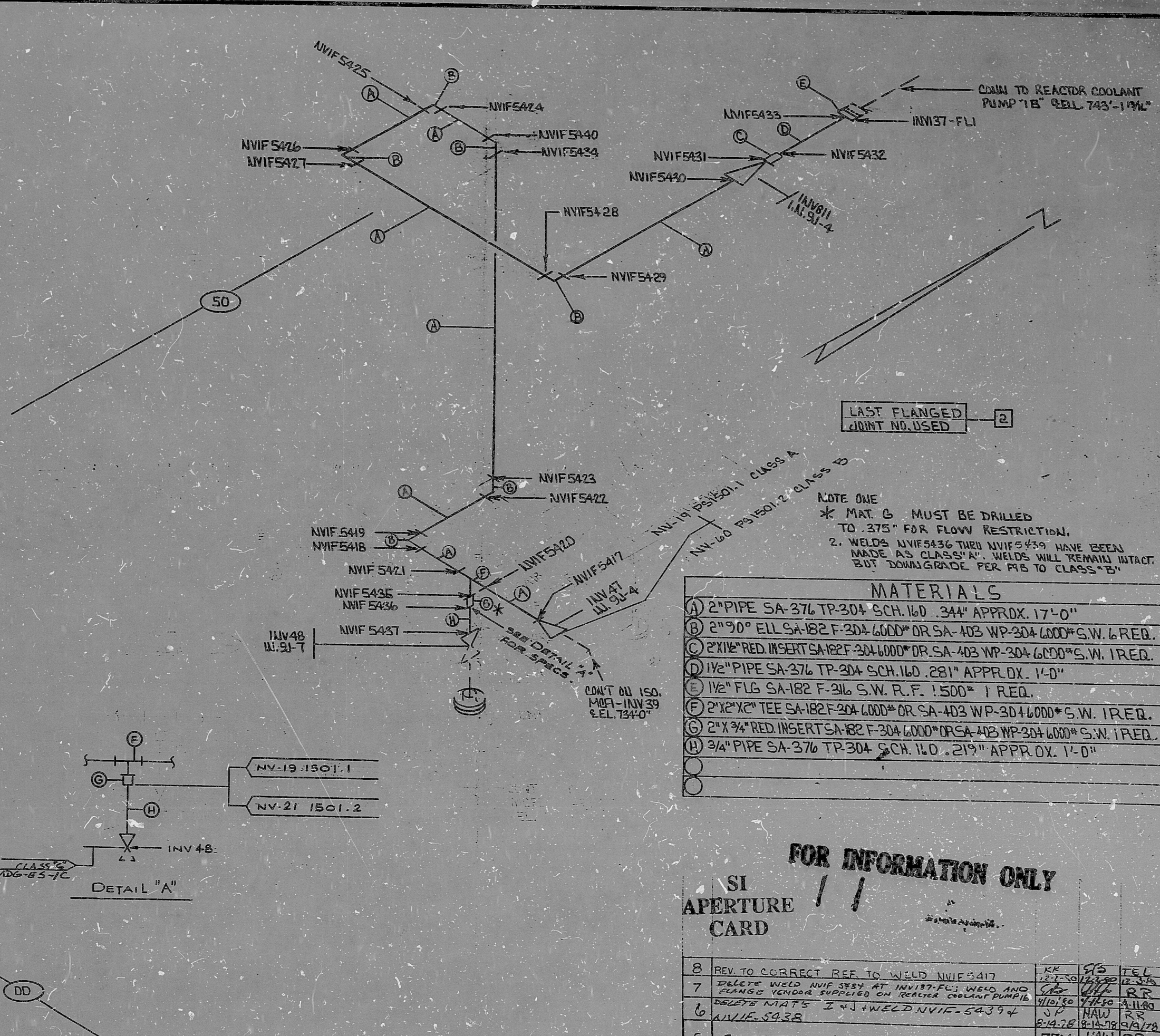


INSURVICE INSPECTION

4	CHANGE SPEC IN DETAIL "A" TO IS01-2 + CHANGE MATS	11/18/78	12/20/78
3	FLOW DIAGRAM SECONDARY CHANGES - DOWNGRADED WELDS NOTE 2 & ADDED M-10A FOR INV137-2	10/17/78	12/14/78
2	REVISED TO SHOW SPEC. FLAGS AT DETAIL "A"	10/17/78	12/14/78
1	REVISED TO CHANGE CONFIGURATION IAW VII# 12188	10/17/78	12/14/78
D	REL. FOR CONST.	10/17/78	12/14/78
NO.	REVISION	ORIG. CHGD. APPR.	DATE DATE DATE

ISO. NO: MCFI-INV-137
 DUKE PIPING CLASS: ASME SECT. III CL. A+B
 SYSTEM SYMBOL: CHEMICAL & VOLUME CONTROL
 PIPING SPEC: NV-19 PS1501.1, NV-21 PS1501.2
 DRAWING NO.: MC-141A-22.21-00, D1; 22-00, D1
 PROJECT: MCGUIRE

NUCLEAR SAFETY RELATED



FOR INFORMATION ONLY
 SI APERTURE CARD

8	REV. TO CORRECT REF. TO WELD NVIF5417	KK	SYS	TEL
7	DELETE WELD NVIF 5434 AT INV137-FL1; WELD AND FLANGE VENDOR SUPPLIED ON REACTOR COOLANT PUMP 1B	12-7-80	12-7-80	12-7-80
6	DELETE MATS I & J + WELD NVIF-5439 + NVIF-5438	11/10/80	11/10/80	11/10/80
5	CORRECTED VALVE NO. IN DETAIL "A"	12/14/78	12/14/78	12/14/78

8903280317

PDR RIDS

