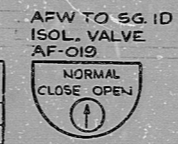


INFORMATION
THIS DOCUMENT IS
SUBJECT TO REVISION
WITHOUT NOTIFICATION
TO THE USER OF THIS
COPY

TO ESF MONITORING
IRR-032
BYPASS/INOP.
HOLD I

BLOCK	CONTACT	POSITION		USE
		CLOSE	NORM OPEN	
A	NO (1)	X		CONT
	NC (2)		X	CONT
B	NO (3)	X		SP
	NC (4)		X	SP

SPRING RETURN TO NORMAL
X - DENOTES CLOSE CONTACTS
GE CAT #CR2940U9203A



CONTACT	VALVE POSITION		USE
	CLOSE	OPEN	
1			THIS DWG.
2			SPARE
3			THIS DWG.
4			THIS DWG.
5			THIS DWG.
6			SPARE
7			THIS DWG.
8			THIS DWG.
9			SPARE
10			SPARE
11			THIS DWG.
12			SPARE
13			SPARE
14			SPARE
15			SPARE
16			SPARE
17	OPENS ON MECH. OVERLOAD ON CLOSING		THIS DWG.
18	OPENS ON MECH. OVERLOAD ON OPENING		THIS DWG.

REFERENCE DRAWINGS
O-E-0105 ELECTRICAL WIRING STANDARDS AND SYMBOLS
I-E-3283 SHI AUXILIARY FEEDWATER MOV LOGIC DIAGRAM
I-E-4356 CONTROL WIRING DIAGRAM STEAM GEN ID AFW ISOLATION VALVE AFO19

TERA APERTURE CARD

LEGEND
480V-MCC-EIA1 COMPT S1
IRR-32 ESF MONITORING TRAIN A CAB.

MECH. EQUIP # 25141TAF019

NUCLEAR SAFETY RELATED
CLASS I E

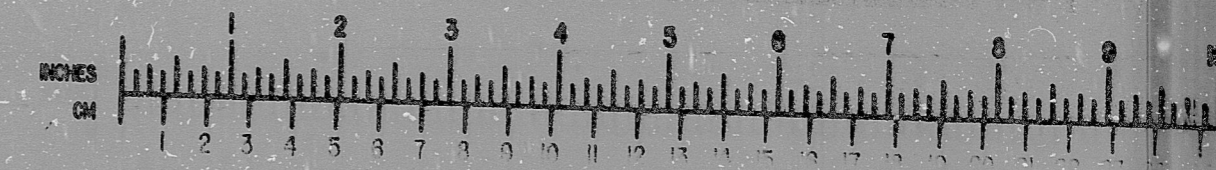
PKG 033A	SUFF102	ACT.581
DRAWING TITLE ELECTRICAL		CONTRACT NO SCALE CR-0241 NONE
ELEMENTARY DIAGRAM		DRAWING NO 2-5-14
STEAM GEN ID AFW ISOLATION VALVE AFO19		I-E-4356A

NO	ISSUED FOR USE	MFA	CHK	BY	DATE	DESCRIPTION	BY	DATE
1	ISSUED FOR USE							

Brown & Root, Inc.
ENGINEERS-CONSTRUCTORS
HOUSTON, TEXAS

SOUTH TEXAS PROJECT

BROWN & ROOT INC.
MICROFILM SERVICES



FRIDAY, OCT. 13, 1973

RIDS

812180256

