

INFORMATION
THIS DOCUMENT IS
SUBJECT TO REVISION
WITHOUT NOTIFICATION
TO THE USER OF THIS
COPY

TO ESF MONITORING
33 IRR-32
BYPASS/110P.
HOLD 1

BLOCK	CONTACT	POSITION			USE
		CLOSE	NORM	OPEN	
A	NO(1)	X			CONT
	NC(2)			X	CONT
B	NO(3)	X			SP
	NC(4)			X	SP

SPRING RETURN TO NORMAL
X - DENOTES CLOSE CONTACTS
GE CAT # CR2940U5203A

TERA
APERTURE
CARD

CONTACT	VALVE POSITION		USE
	CLOSE	OPEN	
1			THIS DWG.
2			SPARE
3			THIS DWG.
4			THIS DWG.
5			THIS DWG.
6			SPARE
7			THIS DWG.
8			THIS DWG.
9			SPARE
10			SPARE
11			THIS DWG.
12			SPARE
13			SPARE
14			SPARE
15			SPARE
16			SPARE
17	OPENS ON MECH. OVERLOAD ON CLOSING		THIS DWG.
18	OPENS ON MECH. OVERLOAD ON OPENING		THIS DWG.

- REFERENCE DRAWINGS
- 0-E-0105 ELECTRICAL WIRING STANDARDS AND SYMBOLS
 - 1-E-3283 SMI AUXILIARY FEEDWATER MOV LOGIC DIAGRAM
 - 1-E-6357 CONTROL WIRING DIAGRAM AUXILIARY FEEDWATER PUMP #14 MAIN STEAM VALVE MS143

LEGEND

- 480V-MCC-EIAI COMPT E1
- IRR-32 ESF MONITORING TRAIN A CAB.

MECH. EQUIP. NO 2510ITMS143		
NUCLEAR SAFETY RELATED CLASS IE		
PKG. 033A	SUFF102	ACT.591
DRAWING TITLE ELECTRICAL		CONTRACT NO. SCALE CR-0241 NONE
ELEMENTARY DIAGRAM		DRAWING NO 2-S-14
AUXILIARY FEEDWATER PUMP #14		I-E-4357A
MAIN STEAM VALVE MS143		

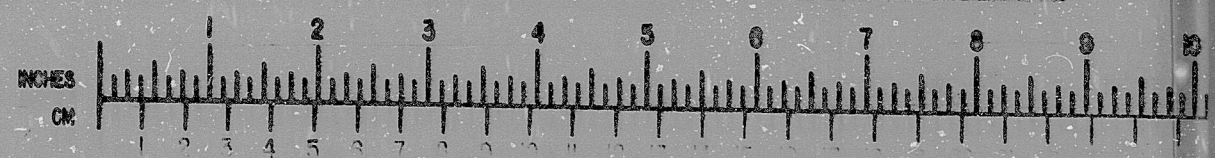
NO	DATE	DESCRIPTION	BY	CHK	ENG	PROJ	ENGR
A		ISSUED FOR USE					

Brown & Root Inc.
ENGINEERS-CONSTRUCTORS
HOUSTON, TEXAS

SOUTH TEXAS PROJECT

INFORMATION PRELIMINARY REVIEW USE CONSTRUCTION

BROWN & ROOT INC.
MICROFILM SERVICES



17"

17"

RIDS

8112180254

