

INSERVICE INSPECTION

ISO. NO: MCFI-INV47
 DUKE PIPING CLASS: ASME SECT. III CL. A & B
 SYSTEM SYMBOL: CHEMICAL & VOLUME CONTROL
 PIPING SPEC.: NV-13 PS 2501.2 NV-14 PS 2501.1
 DRAWING NO.: MC-1414-22.20-00, 22-00, 22-01

| REV. | DATE | BY | CHKD. | APPR. |
|------|------|----|-------|-------|
| 10 | | | | |

| NO. | REVISION | DATE |
|-----|---|----------|
| 5 | ADD WELDS NVIF 6607-6608 AND DETAIL A | 12-31-78 |
| 4 | ADDED VALVE AND I.I.S. IN DETAIL A | 12-31-78 |
| 3 | ADD DETAIL "A", "B", WELDS NVIF 6511, 6512, 6527 THRU 6525, f. MAT. (A) | 12-31-78 |
| 2 | REVISED SUB INV 333 | 12-31-78 |
| 1 | ADD VALV. INV 1616 ON INV 1617 PER I.I.S. 9635 | 12-31-78 |
| 0 | RELEASED FOR CONSTRUCTION | 12-31-78 |

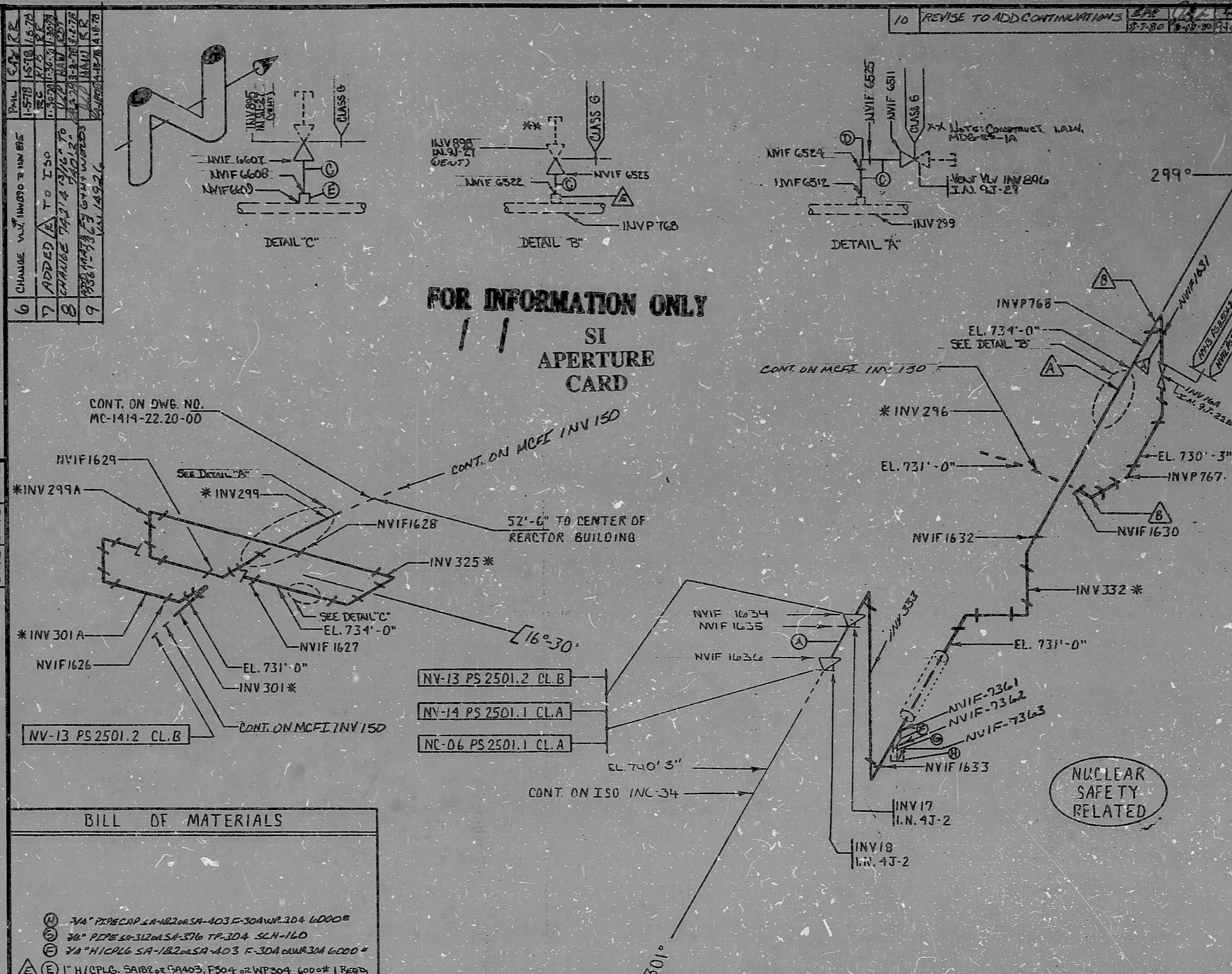
| NO. | REVISION | DATE |
|-----|---------------------------------|--------|
| 6 | CHANGE VALV. INV 6520 TO INV 65 | 1-5-78 |
| 7 | ADDED (A) TO ISO | 1-5-78 |
| 8 | CHANGE INV 1414 TO INV 14 | 1-5-78 |
| 9 | CHANGE INV 1414 TO INV 14 | 1-5-78 |

| NO. | REVISION | DATE |
|-----|-------------------|--------|
| 10 | PROJECT M. GUILRE | 1-5-78 |

| NO. | REVISION | DATE |
|-----|-------------------|--------|
| 10 | PROJECT M. GUILRE | 1-5-78 |

| NO. | REVISION | DATE |
|-----|-------------------|--------|
| 10 | PROJECT M. GUILRE | 1-5-78 |

| NO. | REVISION | DATE |
|-----|-------------------|--------|
| 10 | PROJECT M. GUILRE | 1-5-78 |



| NO. | REVISION | DATE |
|-----|-------------------|--------|
| 10 | PROJECT M. GUILRE | 1-5-78 |

| NO. | REVISION | DATE |
|-----|-------------------|--------|
| 10 | PROJECT M. GUILRE | 1-5-78 |

| NO. | REVISION | DATE |
|-----|-------------------|--------|
| 10 | PROJECT M. GUILRE | 1-5-78 |

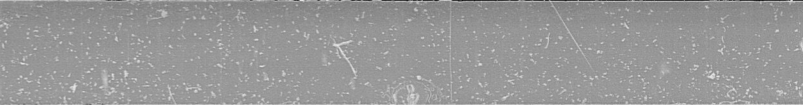
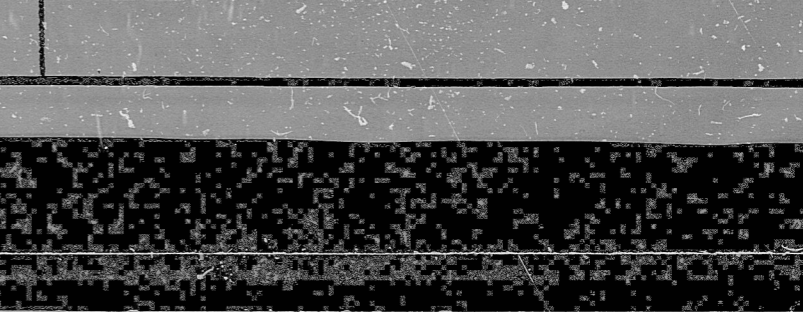
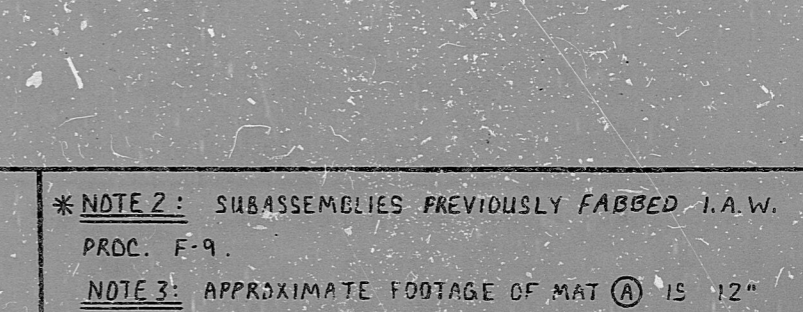
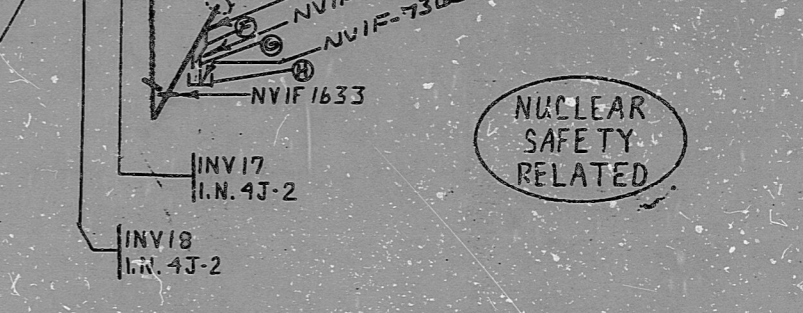
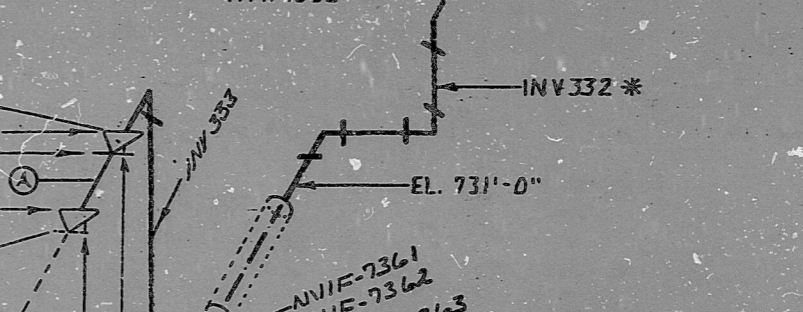
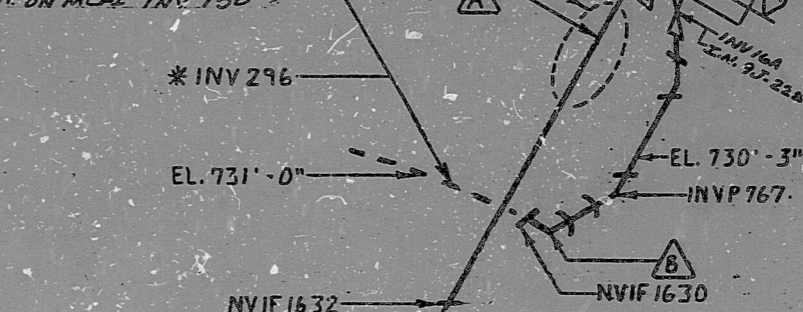
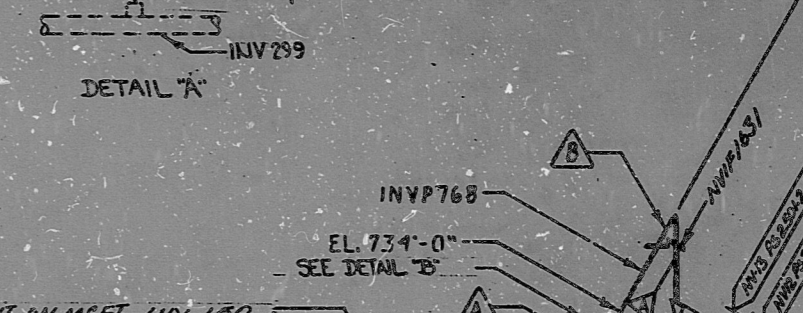
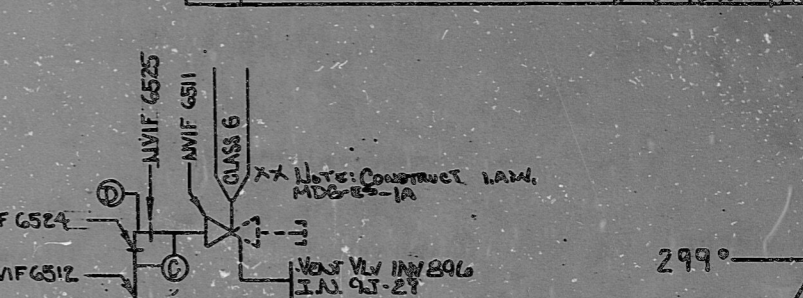
| NO. | REVISION | DATE |
|-----|-------------------|--------|
| 10 | PROJECT M. GUILRE | 1-5-78 |

| NO. | REVISION | DATE |
|-----|-------------------|--------|
| 10 | PROJECT M. GUILRE | 1-5-78 |

| NO. | REVISION | DATE |
|-----|-------------------|--------|
| 10 | PROJECT M. GUILRE | 1-5-78 |

FOR INFORMATION ONLY
 SI APERTURE CARD

10 REVISE TO ADD CONTINUATIONS



NOTE 1: Δ THIS SYMBOL DENOTES MATERIALS THAT ARE PARTS OF PREASSEMBLED SECTIONS. IT IS TO BE USED BY INSPECTOR FOR FIT-UP AND HEAT NUMBER CHECK.

* NOTE 2: SUBASSEMBLIES PREVIOUSLY FABBED I.A.W. PROC. F-9.

NOTE 3: APPROXIMATE FOOTAGE OF MAT (A) IS 12"

NUCLEAR SAFETY RELATED

8903280307

PDR RIDS

