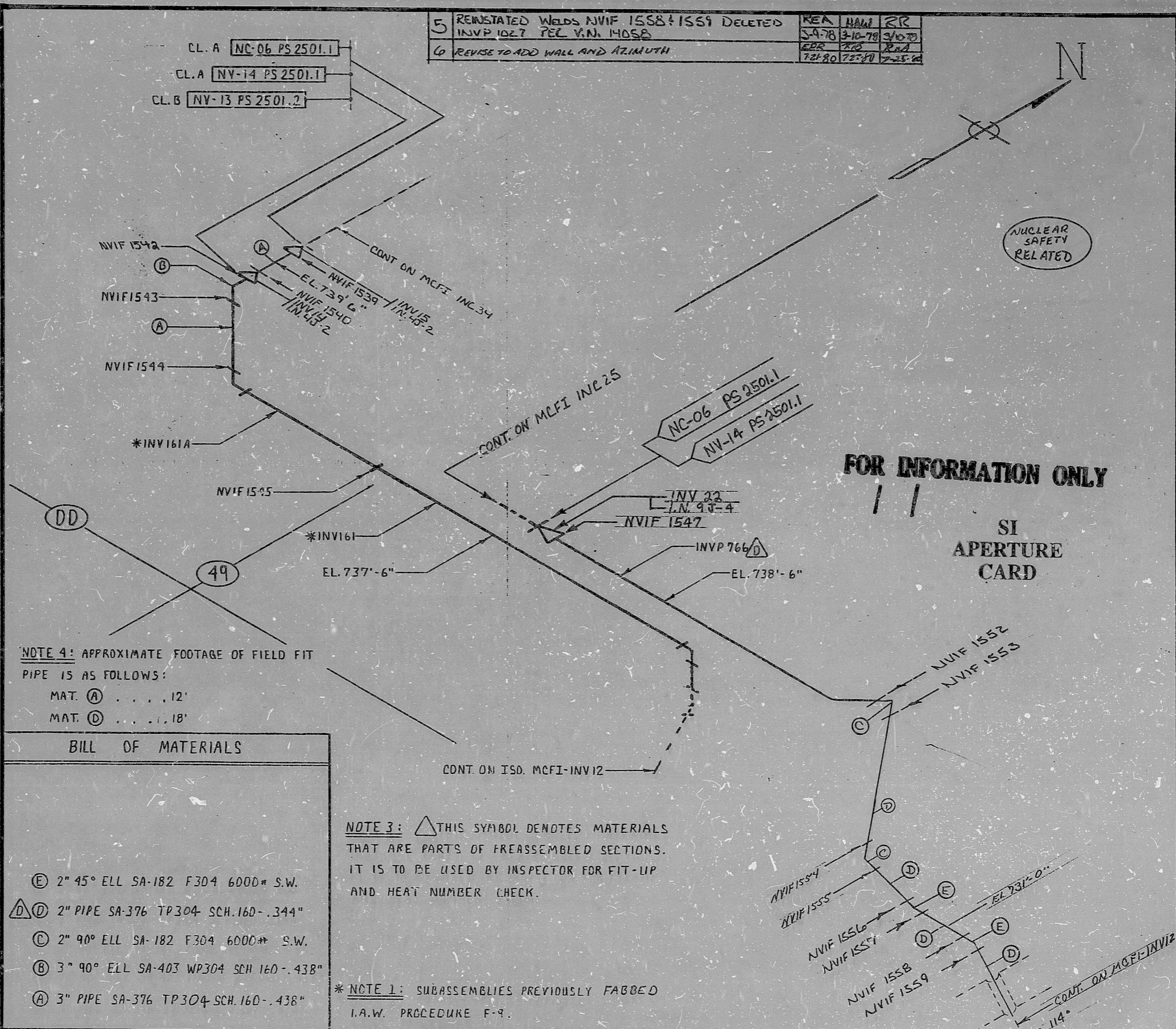


INSERVICE INSPECTION

REV. 6	ISO. NO: MCFI-INV45	BUILDING: REACTOR ZONE-R10
	DUKE PIPING CLASS: ASME SECT. III CL. A & B	
	SYSTEM SYMBOL: CHEMICAL & VOLUME CONTROL	
	PIPING SPEC: NV-13 PS 2501.2, NV-14 PS 2501.1	
	DRAWING NO: MC-1414-22.20-00, 22.22-00	
	PROJECT: MCGUIRE	

NO	REVISION	ORIG. CHD.	APPR. DATE
1	MAT (A) AND (C) CHANGE TR 316 TO TP 304		
0	RELEASED FOR CONST.		
3	REVISED CONFIG. AT INVP 766 (PER LAY-OUT DRAWING) DELETED NVIF 1558, NVIF 1559 & NVIF 1551. REVISED CONT. AT NVIF 1548.		
2	RELOCATED VALVE 22, DELETE WELDS 1548 TO 1551		
1	REVISED ELEVATION TO 735'-0"		



5	REINSTATED WELDS NVIF 1558 & 1559 DELETED	REA	HAW	RR
	INVP 102.7 TEL V.N. 14058	5-9-78	8-10-78	3/10/78
6	REVISE TO ADD WALL AND AZIMUTH	EDR	TRG	Rnd
		7-2-80	7-2-80	7-25-80

NOTE 4: APPROXIMATE FOOTAGE OF FIELD FIT PIPE IS AS FOLLOWS:
 MAT. (A)12'
 MAT. (D)18'

BILL OF MATERIALS	
(E)	2" 45° ELL SA-182 F304 6000# S.W.
(D)	2" PIPE SA-376 TP304 SCH.160-.344"
(C)	2" 90° ELL SA-182 F304 6000# S.W.
(B)	3" 90° ELL SA-403 WP304 SCH 160-.438"
(A)	3" PIPE SA-376 TP304 SCH.160-.438"

NOTE 3: THIS SYMBOL DENOTES MATERIALS THAT ARE PARTS OF PREASSEMBLED SECTIONS. IT IS TO BE USED BY INSPECTOR FOR FIT-UP AND HEAT NUMBER CHECK.

NOTE 1: SUBASSEMBLIES PREVIOUSLY FABBED I.A.W. PROCEDURE F-9.

8903280301

PDR RIDS

