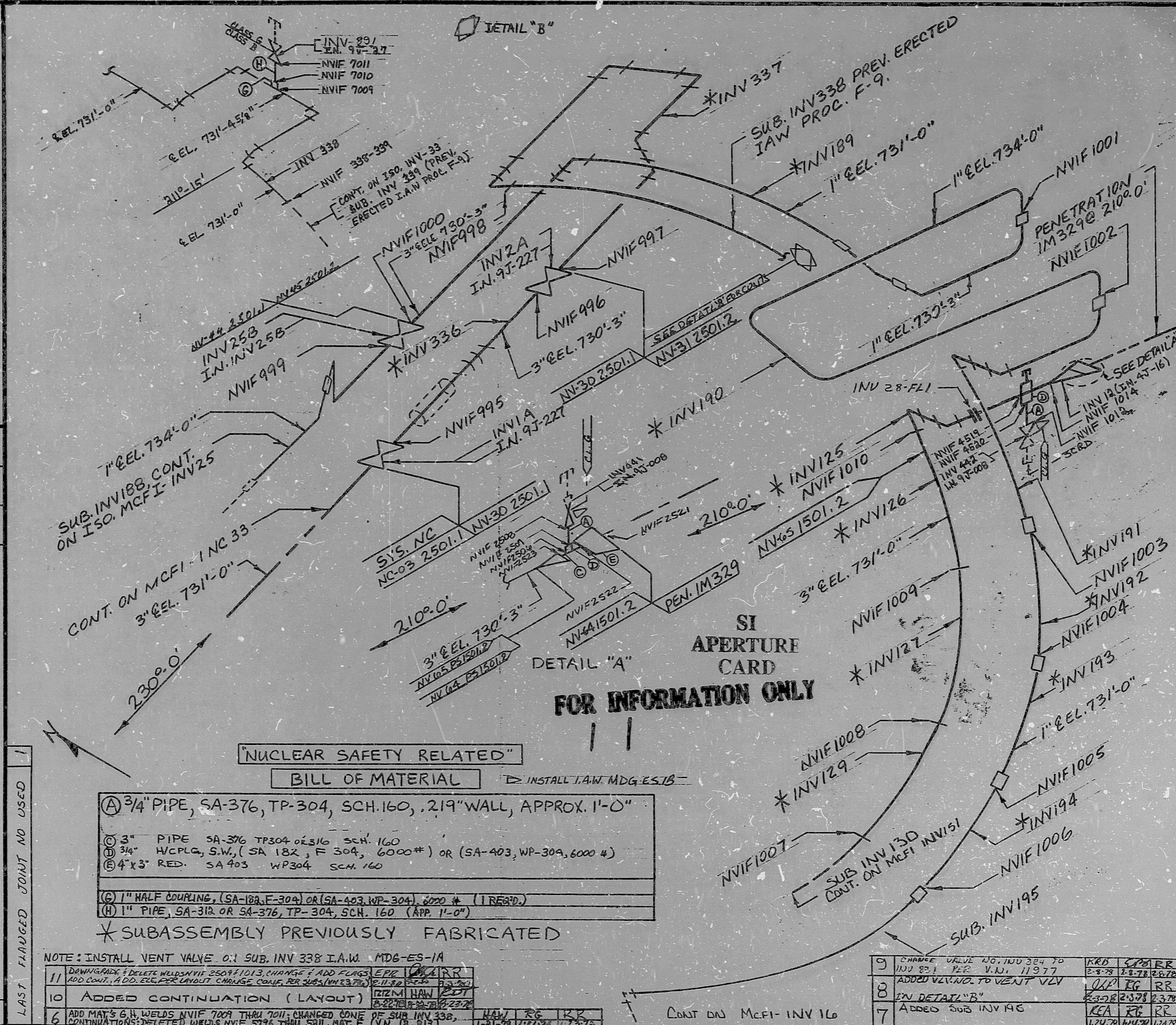


INSERVICE INSPECTION

NO.	REVISION	DATE	DATE	DATE	DATE
1	OR RELEASED FOR CONSTRUCTION	11-27-76	11-27-76	11-27-76	11-27-76
2	1 DELETE NVIF 1011, ADD MAT C.D.E AND NVIF 41	11-27-76	11-27-76	11-27-76	11-27-76
3	2 TURNED VALVE INV 443 TO DRAIN; ADDED WELDS 4518, 4520; ZONE (PER INV 9176)	11-27-76	11-27-76	11-27-76	11-27-76
4	3 CHANGED POSITION OF WELD NVIF 1008	11-27-76	11-27-76	11-27-76	11-27-76
5	4 ADDED DETAIL B WELDS NVIF-5786-5786-5786-5786	11-27-76	11-27-76	11-27-76	11-27-76
6	5 ADDED LAST FLANGE JOINT NO. INV 28-FL1	11-27-76	11-27-76	11-27-76	11-27-76

REV. 11
 BUILDING: ZONE R-3 REAC. #1
 ISO NO.: MCFI-INV28
 DUKE PIPING CLASS: A & B
 SYSTEM SYMBOL: NV CHEMICAL VOLUME CONTROL
 PIPING SPEC: NV-5530, 31, 44, 45 PS1501.2, 2501.1, 2501.2
 DRAWING NO.: MC-1414-22.20-00 401
 PROJECT: MCGUIRE



SI APERTURE CARD FOR INFORMATION ONLY

"NUCLEAR SAFETY RELATED"

BILL OF MATERIAL

INSTALL I.A.W. MDG-ES-18

(A)	3/4" PIPE, SA-376, TP-304, SCH.160, .219" WALL, APPROX. 1'-0"
(B)	3/4" PIPE SA-376 TP304 02316 SCH. 160
(C)	3/4" WCP LG, S.W., (SA 182, F 304, 6000#) OR (SA-403, WP-309, 6000 #)
(D)	4"x3" RED. SA 403 WP304 SCH. 160
(E)	1" HALF COUPLING, (SA-182, F-304) OR (SA-403, WP-304), 2020 # (1 REQ'D)
(F)	1" PIPE, SA-312 OR SA-376, TP-304, SCH. 160 (APP. 1'-0")

* SUBASSEMBLY PREVIOUSLY FABRICATED

NOTE: INSTALL VENT VALVE ON SUB. INV 338 I.A.W. MDG-ES-1A

9	CHANGE VALVE NO. INV 324 TO INV 321 PER V.N. 11977	KRB	CP	RR
8	ADDED VENT NO. TO VENT VLV	CP	IG	RR
7	IN DETAIL "B"	CP	RR	RR
6	ADDED SUB INV 195	KCA	RR	RR

8903280298

PDR RIDS

