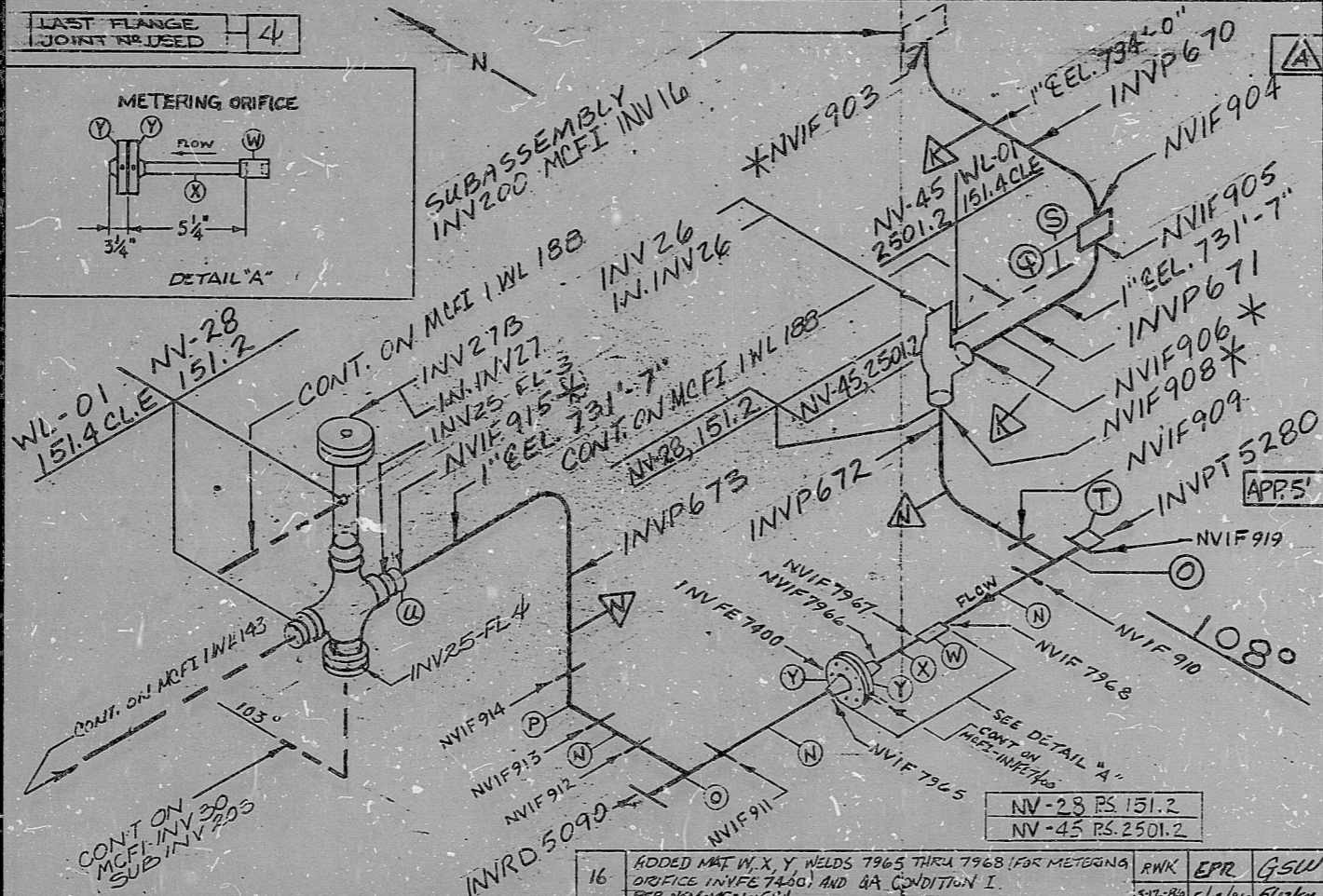
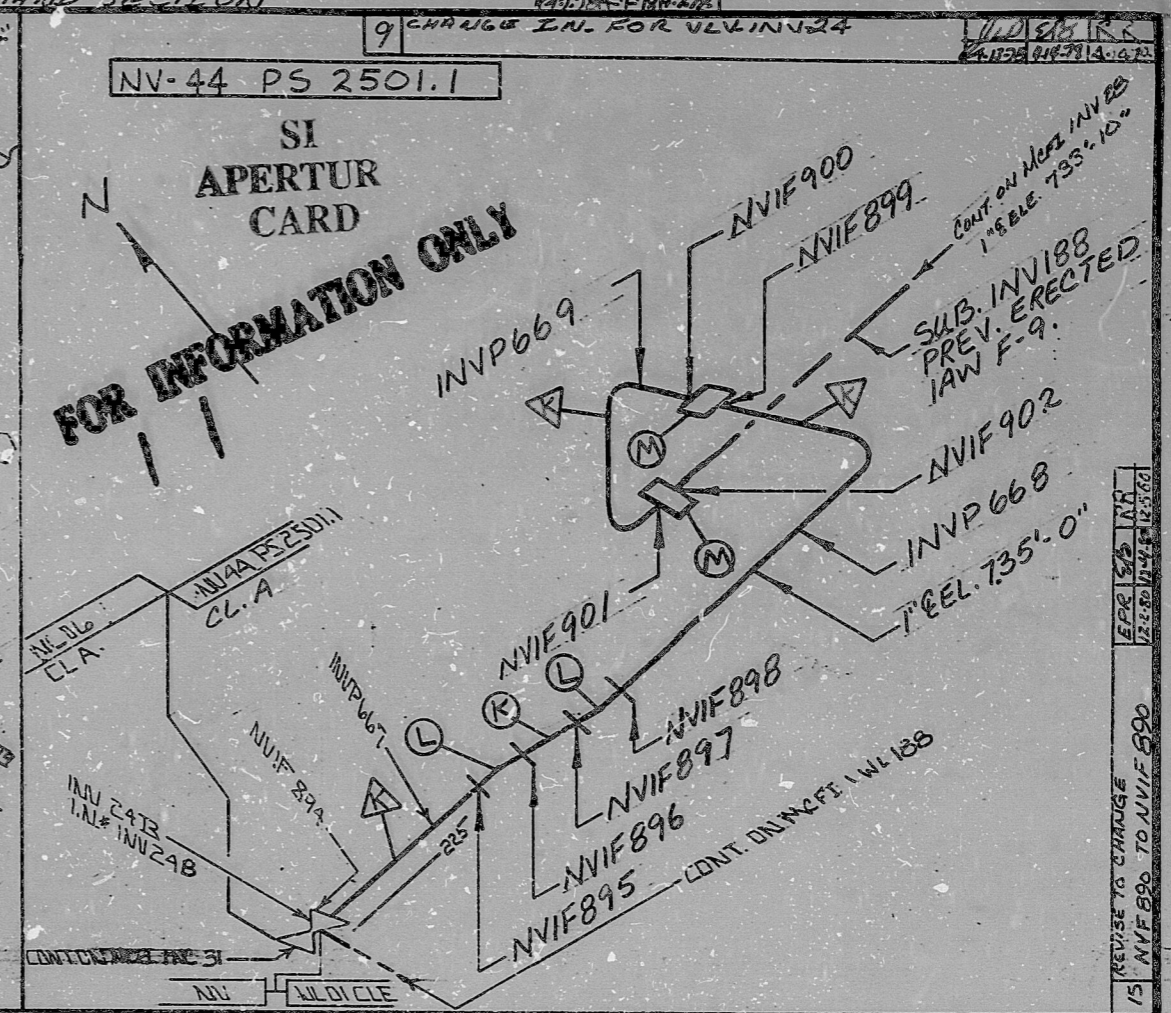
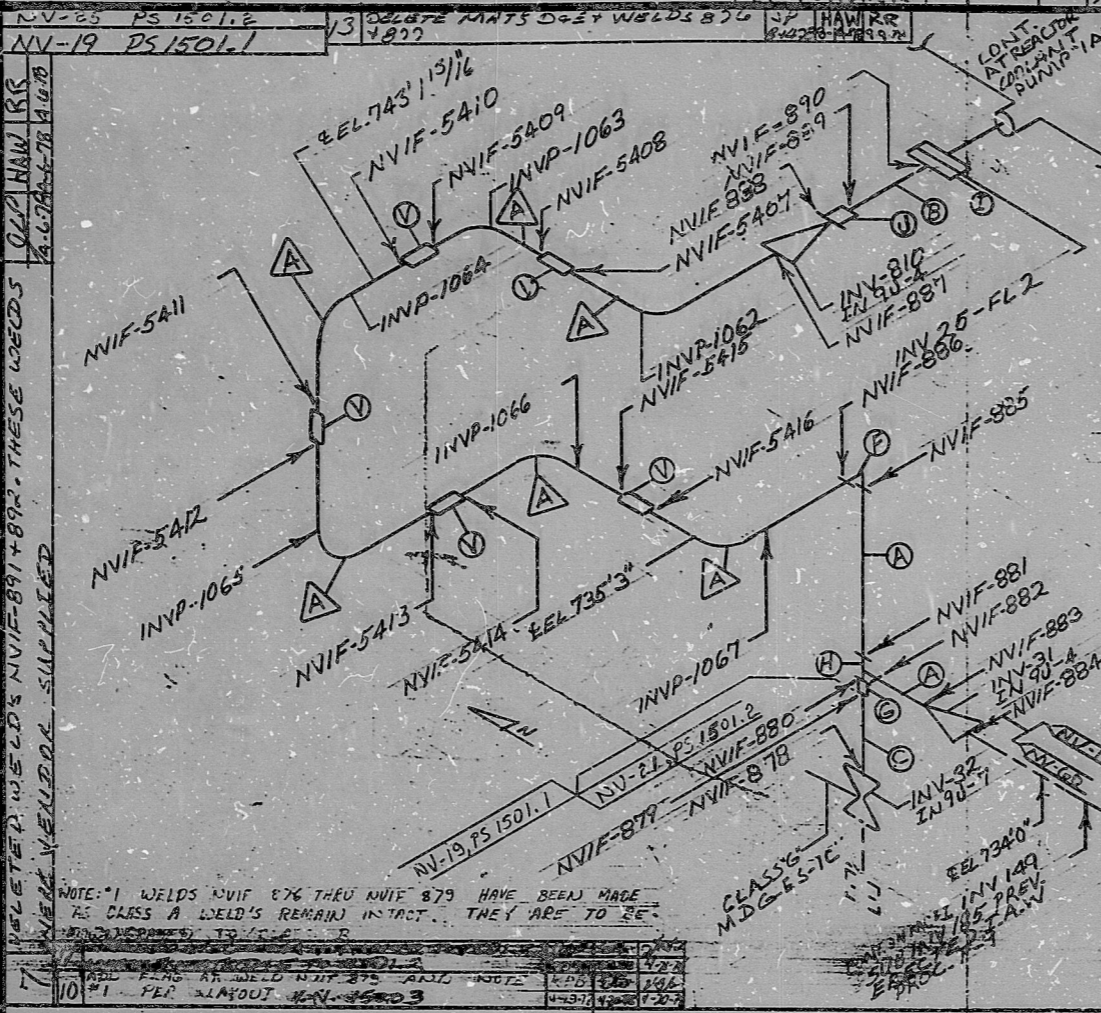


INSERVICE INSPECTION

REV. 10	ISO NO: MCFI-INV25
BUILDING: R2	DUKE PIPING CLASS: A & B
REAC. #1	SYSTEM SYMBOL: NV CHEMICAL VOLUME CONTROL
1501.1	PIPING SPEC: NV-19, 28, 44, 45, PS 2501.1, 2501.2
22-00, 01, 02	DRAWING NO.: MC-1414-22-20-00, 01, 02, 22-00, 01, 02
	PROJECT: M-C-SKIRE

NO.	REVISION	DATE	BY	CHKD.	DATE	APPR.
4	REVISED TO SHOW MAT A IN CHANGED, CONF. ADDED INV-1065 THROUGH 1067 TO LAYOUT DWG. THRU SHIP T MAT @ PER REV TO LAYOUT DWG.	11/17/78	WVX/EP	WVX/EP	11/17/78	WVX/EP
3	REVISED TO CHANGE CONF. INV-1065 THROUGH 1067 TO LAYOUT DWG. THRU SHIP T MAT @ PER REV TO LAYOUT DWG.	11/17/78	WVX/EP	WVX/EP	11/17/78	WVX/EP
2	REVISED TO REMOVE WELD 1907 (CL. E)	11/17/78	WVX/EP	WVX/EP	11/17/78	WVX/EP
1	REVISED TO ADD PIECE U	11/17/78	WVX/EP	WVX/EP	11/17/78	WVX/EP
0	RELEASED FOR CONSTRUCTION	11/17/78	WVX/EP	WVX/EP	11/17/78	WVX/EP



- BILL OF MATERIALS
- (A) 2" PIPE, SA-376, TP-304, SCH.160, 3/4" WALL (APP. 12'-0")
 - (B) 1 1/2" PIPE, SA-376, TP-304, SCH.160, 28" WALL (APP. 2'-0")
 - (C) 3/4" PIPE, SA-376, TP-304, SCH.160, 219" WALL (APP. 2'-0")
 - (D) 1" FULL CPLG, SA-182, F-304 OR SA-403/TP-304, 3000# FS/SW
 - (E) 1" PIPE, SA-312/TP-304, SCH. 20 SMLS OR EFW, MAT BORED TO SCH. 40
 - (F) 1" ORIFICE FLANGE, SA-182, F-304, SCH. 80/300# RF/WN, MAT BORED TO SCH. 40
 - (G) 2"x3/4" RED. INS., (DRILLED TO .375" I.D.) SA-182, F-304, 6000#
 - (H) 2" TEE, SA-182, F-304, 6000#
 - (I) 1 1/2" S.W., R.F., FLNG., SA-182, F-316, 1500#
 - (J) 2"x1 1/2" RED. INS., SA-182, F-304, 6000#
 - (K) 1" PIPE, SA-376, TP-304, SCH.160, 3/4" WALL (APP. 3'-0")
 - (L) 1" 45° ELBOW, SA-182, F-304, 6000#
 - (M) 1" FULL CPLG, SA-182, F-304, 6000#
 - (N) 1" PIPE, SA-312 OR SA-376, TP-304, SCH. 40, .133" WALL
 - (O) 1" TEE, SA-182, F-304, 3000#
 - (P) 1" 90° ELBOW, SA-182, F-304, 3000#
 - (Q) 1" FULL CPLG, SA-182, F-304, 6000#
 - (R) 1" PIPE, A-312, TP-304, SCH. 40, .133" WALL
 - (S) 1/2" PIPE, A-312, TP-304, SCH. 40, .109" WALL
 - (T) 1"x1/2" RED. INS., SA-182, F-304, 3000#
 - (U) 1" FLNG. S.W. SA-182 - F-304 150# R.F.
- NOTE: THIS SYMBOL Δ DENOTES MATERIAL THAT IS PART OF A PRE-ASSEMBLED SECTION TO BE USED BY INSPECTOR FOR FIT UP AND HEAT # CHECK ONLY!
- NOTE: * DENOTES FIELD FIT PRE-ASS. SECT. INVOLVED FOR FIELD WELD

5 REVISED TO SHOW MAT A IN CHANGED, CONF. ADDED INV-1065 THROUGH 1067 TO LAYOUT DWG. THRU SHIP T MAT @ PER REV TO LAYOUT DWG.

3 REVISED TO CHANGE CONF. INV-1065 THROUGH 1067 TO LAYOUT DWG. THRU SHIP T MAT @ PER REV TO LAYOUT DWG.

2 REVISED TO REMOVE WELD 1907 (CL. E)

1 REVISED TO ADD PIECE U

0 RELEASED FOR CONSTRUCTION

14 REVISE TO CHANGE FLAG, ADD CONTINUATIONS, FLAG AND ELEVATION PER LAYOUT

16 ADDED MAT W, X, Y WELDS 7965 THRU 7968 FOR METERING ORIFICE (NVIF 7400) AND QA CONDITION I PER NSM-MG-14504

NOTE: THIS SYMBOL Δ DENOTES MATERIAL THAT IS PART OF A PRE-ASSEMBLED SECTION TO BE USED BY INSPECTOR FOR FIT UP AND HEAT # CHECK ONLY!

NOTE: * DENOTES FIELD FIT PRE-ASS. SECT. INVOLVED FOR FIELD WELD

8903280295

PDR RIDS

