

17"

17"

11"

11"

8.5"

8.5"

8.5"

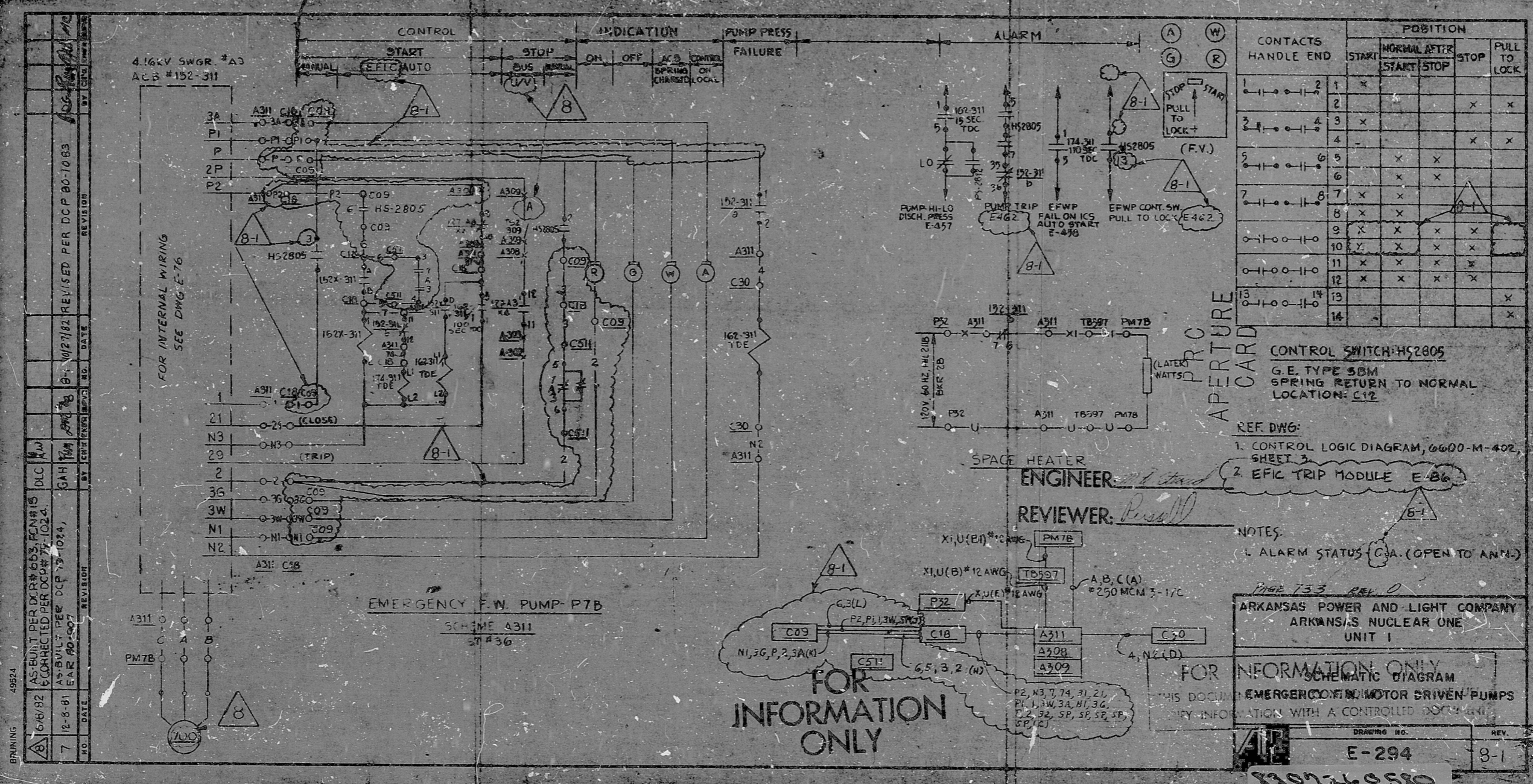
8.5"

11"

11"

17"

17"



NO.	DATE	REVISION
8	6/8/92	AS-BUILT PER DCP# 663, FCN# 15 CORRECTED PER DCP# 77, 1024
7	12-8-81	EAR #0-007

BRUNING 48924

NO.	DATE	REVISION
8	6/8/92	AS-BUILT PER DCP# 663, FCN# 15 CORRECTED PER DCP# 77, 1024
7	12-8-81	EAR #0-007

NO.	DATE	REVISION
8	6/8/92	AS-BUILT PER DCP# 663, FCN# 15 CORRECTED PER DCP# 77, 1024
7	12-8-81	EAR #0-007

NO.	DATE	REVISION
8	6/8/92	AS-BUILT PER DCP# 663, FCN# 15 CORRECTED PER DCP# 77, 1024
7	12-8-81	EAR #0-007

NO.	DATE	REVISION
8	6/8/92	AS-BUILT PER DCP# 663, FCN# 15 CORRECTED PER DCP# 77, 1024
7	12-8-81	EAR #0-007

NO.	DATE	REVISION
8	6/8/92	AS-BUILT PER DCP# 663, FCN# 15 CORRECTED PER DCP# 77, 1024
7	12-8-81	EAR #0-007

NO.	DATE	REVISION
8	6/8/92	AS-BUILT PER DCP# 663, FCN# 15 CORRECTED PER DCP# 77, 1024
7	12-8-81	EAR #0-007

NO.	DATE	REVISION
8	6/8/92	AS-BUILT PER DCP# 663, FCN# 15 CORRECTED PER DCP# 77, 1024
7	12-8-81	EAR #0-007

RIDS

8307260580

