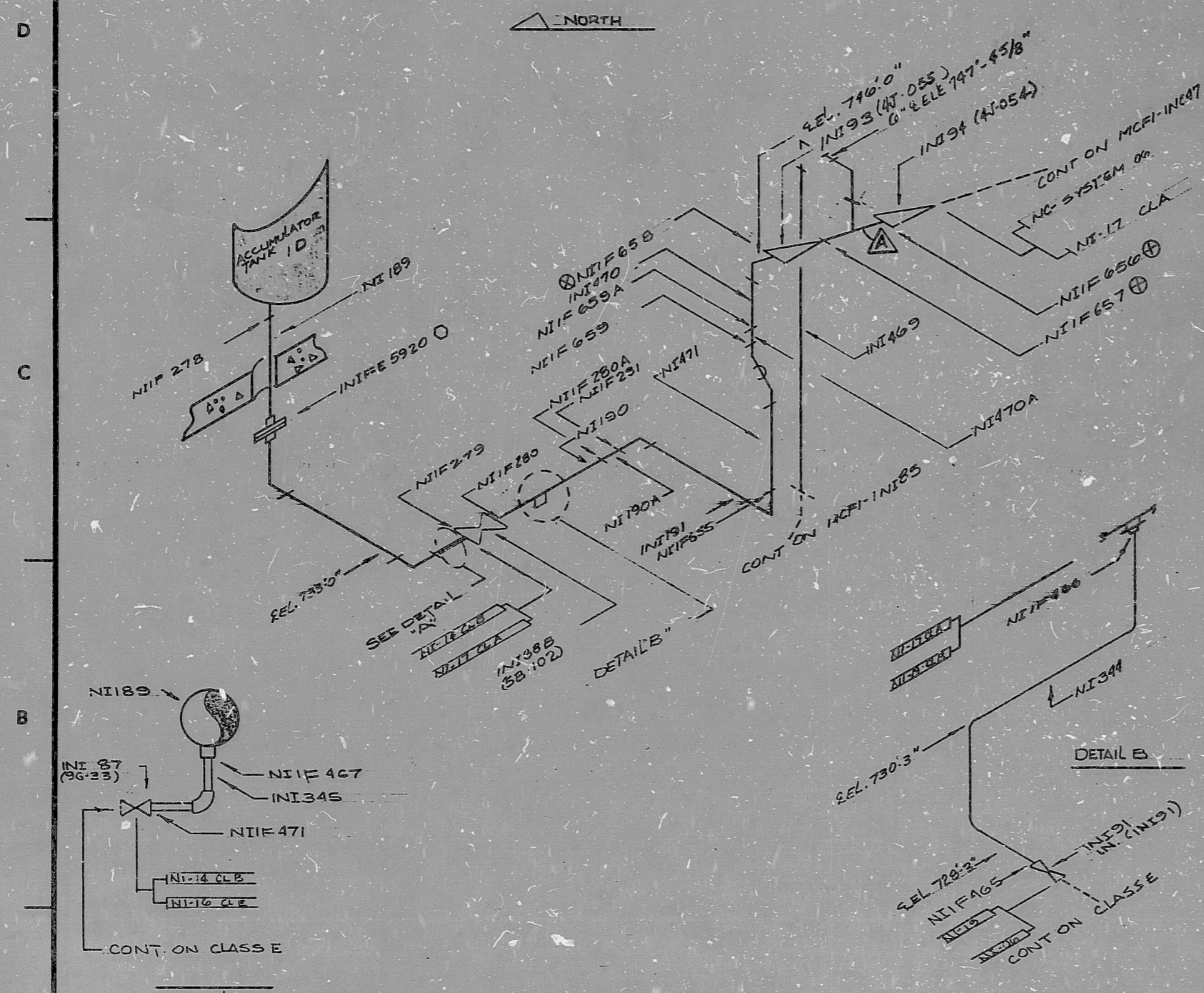


INSERVICE INSPECTION

REVISIONS BLOCK

GRID	REV. NO.	DESCRIPTION	DATE	BY	APPV. DATE
	0	RELEASE FOR CONST.	6/85	EPK	8/10/80
	1	CHANGE COND. 16, RED. DIA. TO BILL OF MAT'L PER NISA 679 ADD QA COND. 2 ADD NOTE (1)	1-22-90	EPK	11/10/85
	2	CHANGE STEM OF VALVES (NI 473 TO (NI 655), NI 474 TO (NI 654) AND REVISE NOTE (1)	3-23-90	EPK	11/10/85
		PER NISM-MG 1-1743 ADD (6) TO NIFE 658	6/5/96	WICK	6-18-96



FOR INFORMATION ONLY

SI APERTURE CARD

NOTE 1  
 ○ FOR TORQUING REQUIREMENTS SEE ISOMETRIC MCFI-INI45  
 ⊕ DENOTES FLUSH WELDS (AW CPB) AND APPENDIX TABLE B-2-3, NOTE 3 OF PIPE SPEC AND MC 14710-1.1 (DETAIL X)

ITEM	SIZE	DES.	SPEC./GRADE	SCH./RATE	REMARKS
△	10" x 10" x 1/2"	RED. TEE	SA403/HP310	140 x 160	SMLS
BILL OF MATERIAL QA CONDITION I					
LAST WELD NO. NA			DUKE POWER COMPANY McGUIRE NUCLEAR STATION		LAST FL. NO. NA
NUCLEAR SAFETY RELATED					
PIPE SPEC: 2E01.1, 2E01.2		SYS. SYMBOL: NI	SEC. NO: 14, 17, 19	DRAWING NO: 22-00, MC-1414-09.21-00	EL: 730'-3"
APPLICABLE CODE: ASME SECT III		CLASS: A, B	ISO. NO: MCFI-INI30	REV: 2	

INSERVICE INSPECTION

Series No. 04

8903280279

PDR RIDS

