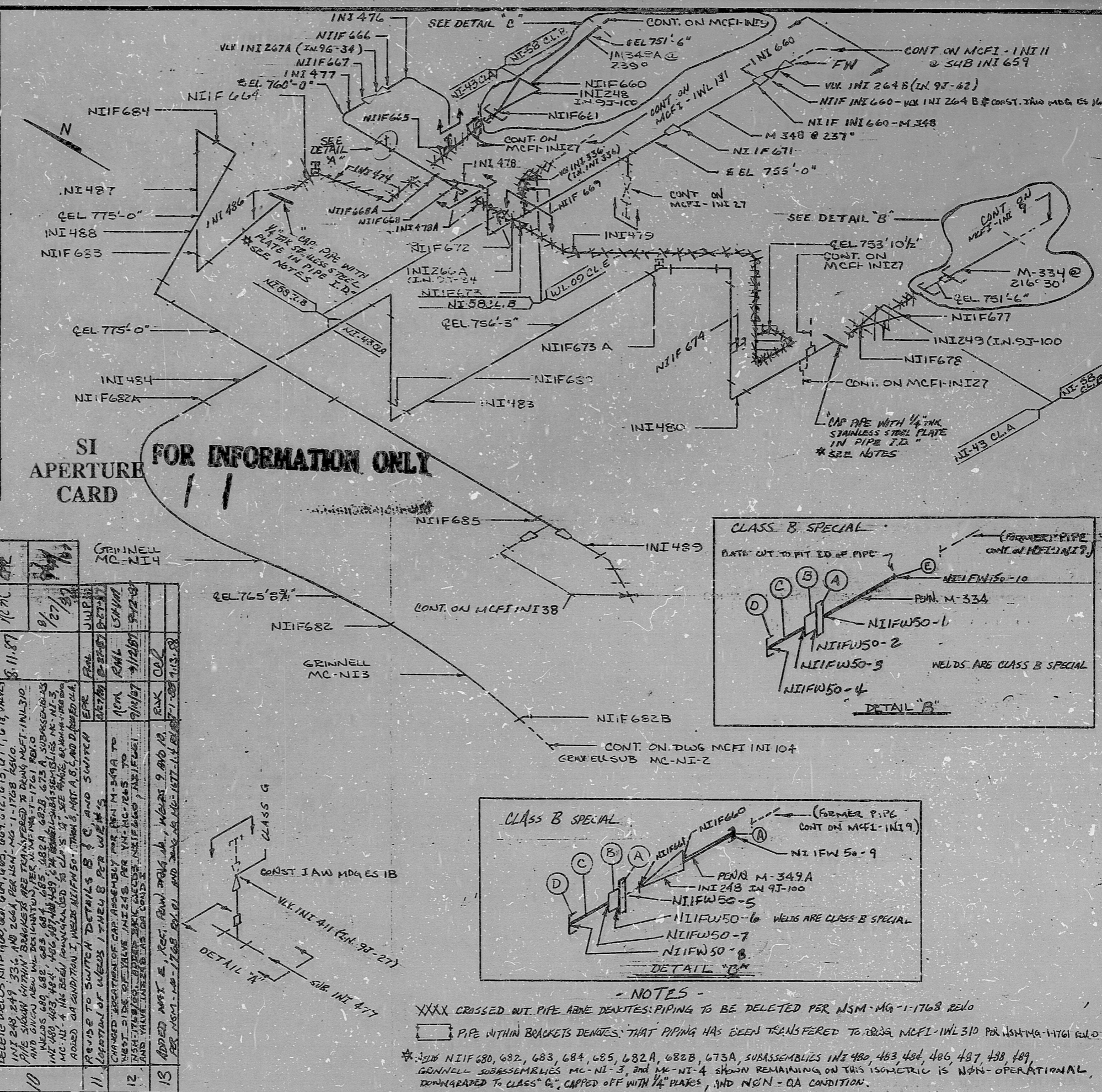


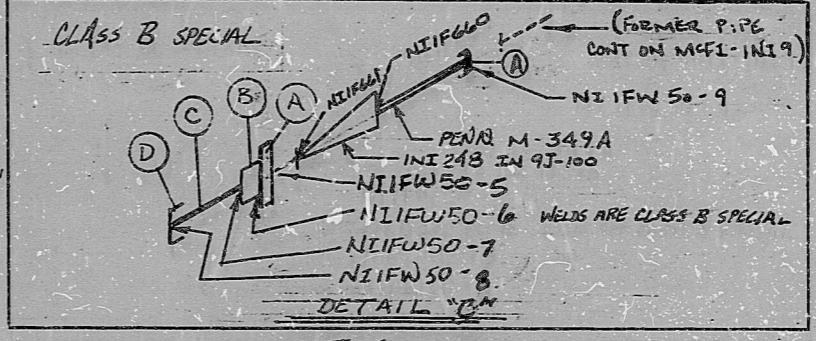
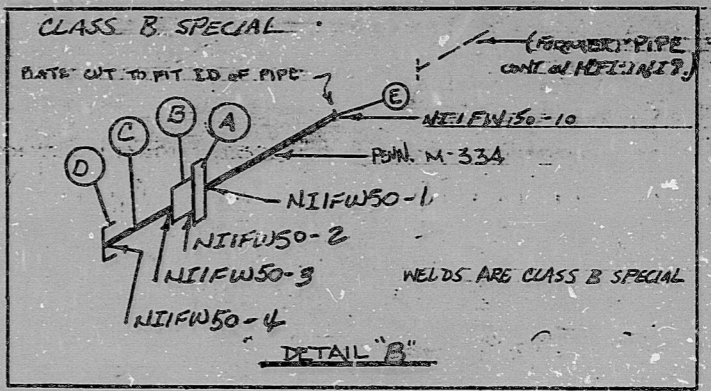
IN SERVICE INSPECTION

REV. 13	ISO. NO.: MCFI INI50	DUKE PIPING CLASS: ASME SECTION III, CLASS B SPECIAL
		SYSTEM SYMBOL: SAFETY INJECTION SYSTEM
		BUILDING: REACTOR
		ZONING: R4
		PIPING SPEC.: NI-58 PS-2501.2; NI-113 PS-2501.1
		DRAWING NO.: MC-1414-09-20-07-08 Rev. 10/18/77
		PROJECT: MCQUIRE

NO.	REVISION	DATE	CHKD.	APPR.
1	REVISED SPEC. FROM NI 44 TO NI 58	11-28-77	SMF	
2	REV. TO CORRECT ITEM NO. ON VLV. INI. 264B	11-28-77	SMF	
3	REVISE TO CHANGE OUT HOT FENS. ASSY. IN 399 RELIEVES	11-28-77	SMF	
4	REVISE TO CHANGE OUT HOT FENS. ASSY. IN 399 RELIEVES	11-28-77	SMF	
5	REVISE TO CHANGE OUT HOT FENS. ASSY. IN 399 RELIEVES	11-28-77	SMF	
6	REVISE TO CHANGE OUT HOT FENS. ASSY. IN 399 RELIEVES	11-28-77	SMF	
7	REVISE TO CHANGE OUT HOT FENS. ASSY. IN 399 RELIEVES	11-28-77	SMF	
8	REVISE TO CHANGE OUT HOT FENS. ASSY. IN 399 RELIEVES	11-28-77	SMF	
9	REVISE TO CHANGE OUT HOT FENS. ASSY. IN 399 RELIEVES	11-28-77	SMF	
10	DELETE PIPING AS MARKED AND DELETE SUBS INI 474, 479, 481, 482, 483, 484, 485, 486, 487, 488, 489, 490, 491, 492, 493, 494, 495, 496, 497, 498, 499, 500, 501, 502, 503, 504, 505, 506, 507, 508, 509, 510, 511, 512, 513, 514, 515, 516, 517, 518, 519, 520, 521, 522, 523, 524, 525, 526, 527, 528, 529, 530, 531, 532, 533, 534, 535, 536, 537, 538, 539, 540, 541, 542, 543, 544, 545, 546, 547, 548, 549, 550, 551, 552, 553, 554, 555, 556, 557, 558, 559, 560, 561, 562, 563, 564, 565, 566, 567, 568, 569, 570, 571, 572, 573, 574, 575, 576, 577, 578, 579, 580, 581, 582, 583, 584, 585, 586, 587, 588, 589, 590, 591, 592, 593, 594, 595, 596, 597, 598, 599, 600, 601, 602, 603, 604, 605, 606, 607, 608, 609, 610, 611, 612, 613, 614, 615, 616, 617, 618, 619, 620, 621, 622, 623, 624, 625, 626, 627, 628, 629, 630, 631, 632, 633, 634, 635, 636, 637, 638, 639, 640, 641, 642, 643, 644, 645, 646, 647, 648, 649, 650, 651, 652, 653, 654, 655, 656, 657, 658, 659, 660, 661, 662, 663, 664, 665, 666, 667, 668, 669, 670, 671, 672, 673, 674, 675, 676, 677, 678, 679, 680, 681, 682, 683, 684, 685, 686, 687, 688, 689, 690, 691, 692, 693, 694, 695, 696, 697, 698, 699, 700, 701, 702, 703, 704, 705, 706, 707, 708, 709, 710, 711, 712, 713, 714, 715, 716, 717, 718, 719, 720, 721, 722, 723, 724, 725, 726, 727, 728, 729, 730, 731, 732, 733, 734, 735, 736, 737, 738, 739, 740, 741, 742, 743, 744, 745, 746, 747, 748, 749, 750, 751, 752, 753, 754, 755, 756, 757, 758, 759, 760, 761, 762, 763, 764, 765, 766, 767, 768, 769, 770, 771, 772, 773, 774, 775, 776, 777, 778, 779, 780, 781, 782, 783, 784, 785, 786, 787, 788, 789, 790, 791, 792, 793, 794, 795, 796, 797, 798, 799, 800, 801, 802, 803, 804, 805, 806, 807, 808, 809, 810, 811, 812, 813, 814, 815, 816, 817, 818, 819, 820, 821, 822, 823, 824, 825, 826, 827, 828, 829, 830, 831, 832, 833, 834, 835, 836, 837, 838, 839, 840, 841, 842, 843, 844, 845, 846, 847, 848, 849, 850, 851, 852, 853, 854, 855, 856, 857, 858, 859, 860, 861, 862, 863, 864, 865, 866, 867, 868, 869, 870, 871, 872, 873, 874, 875, 876, 877, 878, 879, 880, 881, 882, 883, 884, 885, 886, 887, 888, 889, 890, 891, 892, 893, 894, 895, 896, 897, 898, 899, 900, 901, 902, 903, 904, 905, 906, 907, 908, 909, 910, 911, 912, 913, 914, 915, 916, 917, 918, 919, 920, 921, 922, 923, 924, 925, 926, 927, 928, 929, 930, 931, 932, 933, 934, 935, 936, 937, 938, 939, 940, 941, 942, 943, 944, 945, 946, 947, 948, 949, 950, 951, 952, 953, 954, 955, 956, 957, 958, 959, 960, 961, 962, 963, 964, 965, 966, 967, 968, 969, 970, 971, 972, 973, 974, 975, 976, 977, 978, 979, 980, 981, 982, 983, 984, 985, 986, 987, 988, 989, 990, 991, 992, 993, 994, 995, 996, 997, 998, 999, 1000			
11	REVISE TO ADD DETAIL 'A' AND NOTE TWO	11-28-77	SMF	
12	REVISE TO ADD DETAIL 'B' AND NOTE TWO	11-28-77	SMF	
13	REVISE TO ADD DETAIL 'C' AND NOTE TWO	11-28-77	SMF	



SI APERTURE CARD FOR INFORMATION ONLY



NOTES  
 XXXX CROSSED OUT PIPE ABOVE DEVICES: PIPING TO BE DELETED PER NSM-MG-1-1768 REV.0  
 PIPE WITHIN BRACKETS DENOTES THAT PIPING HAS BEEN TRANSFERRED TO BR3A MCFI-INI 310 PER NSM-MG-1-1761 REV.0  
 \* 3/28 NIIF 680, 682, 683, 684, 685, 682A, 682B, 673A, SUBASSEMBLIES INI 480, 483, 484, 486, 487, 488, 489, GRINNELL SUBASSEMBLIES MC-NI-3, AND MC-NI-4 SHOWN REMAINING ON THIS ISOMETRIC IS NON-OPERATIONAL, DOWNGRADED TO CLASS 'C', CAPPED OFF WITH 1/4" PLATES, AND NON-OA CONDITION.

8903280110

PDR RIDS

