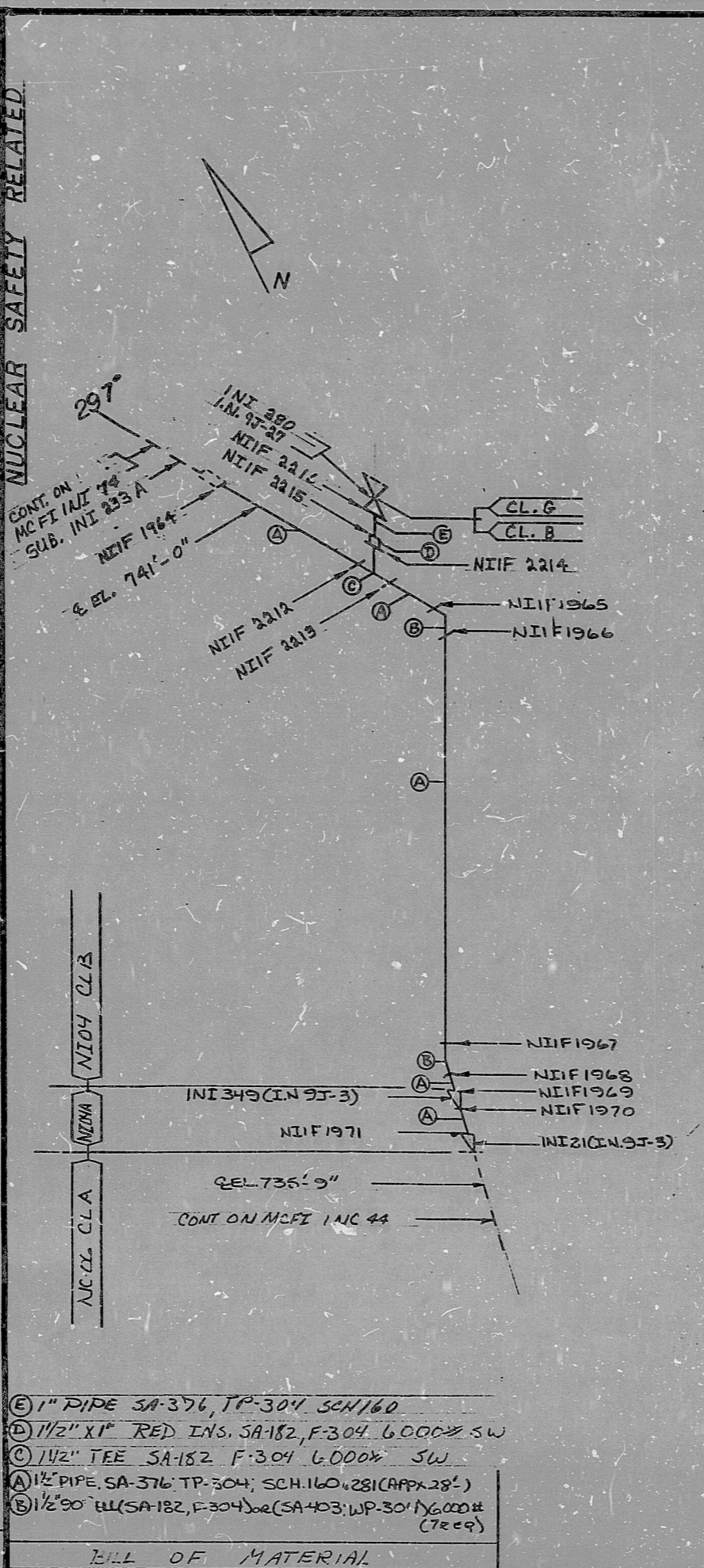


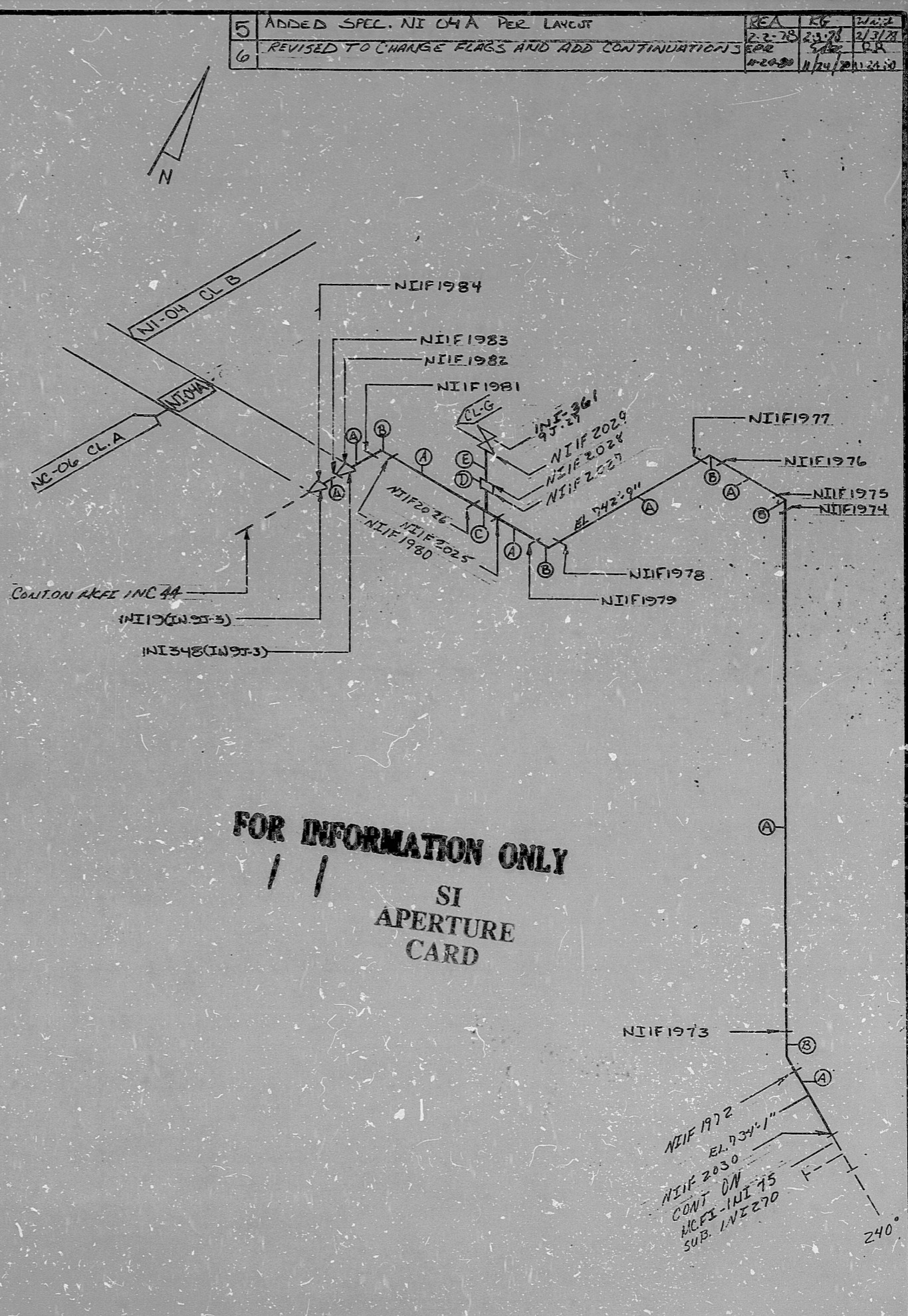
INSURVICE INSPECTION

4	ADDED VALVE INI 390, WELDS 221A THRU 221G	HAIO	EDI	SNF
3	ADDED VLV. N.O.	5-17-77	5-17-77	5-17-77
2	REVISED TO ADD NIIF 2030 AT 518. INI 270	5-17-77	5-17-77	5-17-77
1	REVISED TO ADD VENT VLV. AT NIIF 2029, CHANGED CONFIG. AT NIIF 1972	5-17-77	5-17-77	5-17-77
0	REL FOR CONSTRUCTION VN 8836 & 8938	5-17-77	5-17-77	5-17-77
NO.	REVISION	ORIG. DATE	CHKD. DATE	APPR. DATE



- (E) 1" PIPE SA-376, TP-304, SCH 160
- (D) 1 1/2" X 1" RED INS. SA-182, F-304, 6.0004 SW
- (C) 1 1/2" TEE SA-182 F-304 6.0004 SW
- (A) 1 1/2" PIPE SA-376, TP-304, SCH 160 (APPX 28')
- (B) 1 1/2" 90° ELB (SA-182, F-304) OR (SA-403, WP-304) 6.0004 (7209)

BILL OF MATERIAL



FOR INFORMATION ONLY
 SI
 APERTURE
 CARD

NIIF 1972
 EL. 734'-1"
 NIIF 2030
 CONT. ON
 MCFI INI 75
 SUB. INI 270

DUNCAN/PARNELL, INC., CHARLOTTE 1976

8903280105

PDR RIDS

