

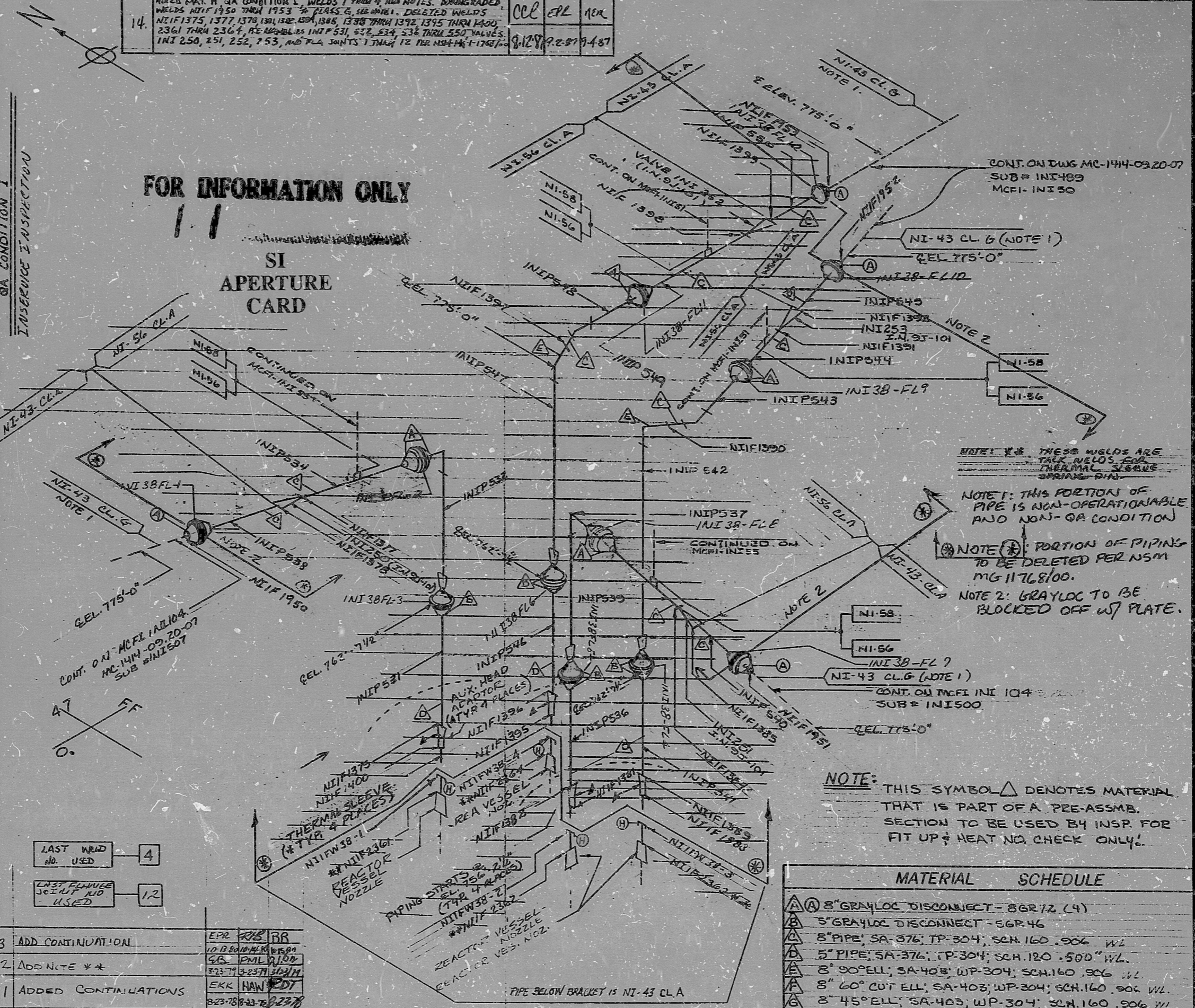
ADD WELDS NIIF 2301, 2302, 2303, 2304. REVISED TO EL. 762'-7/2" AT 5" GRAYLOCK'S (VN 11408)

ADD WELDS NIIF 2301, 2302, 2303, 2304	REVISED TO EL. 762'-7/2" AT 5" GRAYLOCK'S (VN 11408)
---------------------------------------	--

REV. 14
 BUILDING: REACTOR
 ISO. NO.: MCFI-INI38
 DUKE PIPING CLASS: ASME SECT III CLASS A
 SYSTEM SYMBOL: NI SAFETY INU SYST
 PIPING SPEC: NI-43 PS-2501.1
 DRAWING NO.: MC-1414-09.20-C7-08
 PROJECT: MCGUIRE
 QA CONDITION I
 INSERVICE INSPECTION

REVISION

NO.	REVISION	DATE	BY	CHKD.	APPR.
13	ADD CONTINUATION		EPR	RR	
12	ADD NOTE **		GR	PML	WJ
11	ADDED CONTINUATIONS		EKK	HAW	EDT
10	ADD FLANGE JOINT NO'S		JP	SRT	WJ



MATERIAL SCHEDULE

Ⓐ	8" GRAYLOC DISCONNECT - 8GR72 (4)
Ⓑ	5" GRAYLOC DISCONNECT - 5GR46
Ⓒ	8" PIPE; SA-376; TP-304; SCH. 160 .506 WL
Ⓓ	5" PIPE; SA-376; TP-304; SCH. 120 .500" WL
Ⓔ	8" 90° ELL; SA-403; WP-304; SCH. 160 .506 WL
Ⓕ	8" 60° CUT ELL; SA-403; WP-304; SCH. 160 .506 WL
Ⓖ	8" 45° ELL; SA-403; WP-304; SCH. 160 .506 WL
Ⓖ	6" PIPE CAP SA-403/WP-304 XX STRONG SMLS SW

DUNSM-PARWELL, INC., CHARLOTTE, N.C.

8903280102

PDR RIDS

