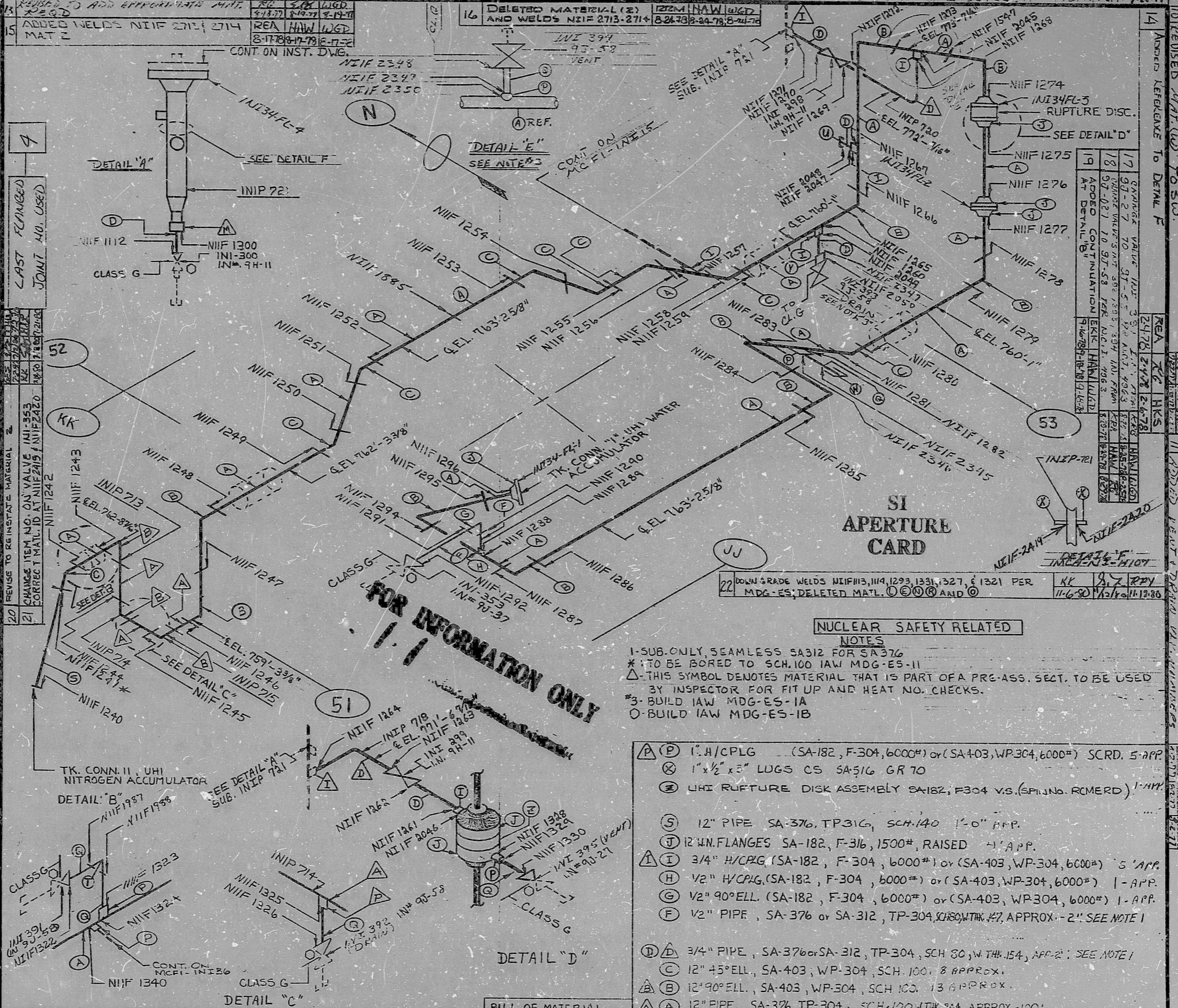


7 MAJOR CONFIGURATION ON 3/4" LINES; ADD MAT.'S T, U, HAW (EDH) (KUS) (6-3-77) 8 CHANGED CONE OF INIP 721 (PER N.C.I. # 3096) (HAW) (EDH) (KUS) (6-30-77) (6-21-77) 9 ADDED PIECES Q+W AT WELDS (NIF 2305) (KUS) (7-21-77) (7-21-77)

REV	22	BUILDING:	AUX
ISO NO.:	MCFI INI-34	DUKE PIPING CLASS:	B
SYSTEM SYMBOL: NI SAFETY INJECTION SYSTEM			
PIPING SPEC: NI 41-PS-1501-2			
DRAWING NO.: MC-1414-09-43-01-02-03			
PROJECT MC GUIDE			
4 LAST FLANGED JOINT NO. USED			
REV	NO.	DATE	DESCRIPTION
1	0		REL. FOR CONST.
2	1	10-4-76	ADDED CONT. OF ISO.
3	2	10-4-76	ADD MAT. S AND *NOTE AND DELETE MIN. J AT NIF 1240
4	3	10-4-76	ADDED MAT. 5 AND WELD NIF 1547 (PER V.N. 6635)
5	4	10-4-76	ADDED FLANGED JOINT NOS. 1-4 (REVISED TO ADD NIF 1885)
6	5	10-4-76	REVISED TO ADD NIF 112, 113, 114, 127, 128
7	6	10-4-76	REVISED TO ADD APPROXIMATE MAT. (REVISED TO ADD NIF 1249)
8	7	10-4-76	REVISED TO ADD APPROXIMATE MAT. (REVISED TO ADD NIF 1249)
9	8	10-4-76	REVISED TO ADD APPROXIMATE MAT. (REVISED TO ADD NIF 1249)
10	9	10-4-76	REVISED TO ADD APPROXIMATE MAT. (REVISED TO ADD NIF 1249)
11	10	10-4-76	REVISED TO ADD APPROXIMATE MAT. (REVISED TO ADD NIF 1249)
12	11	10-4-76	REVISED TO ADD APPROXIMATE MAT. (REVISED TO ADD NIF 1249)
13	12	10-4-76	REVISED TO ADD APPROXIMATE MAT. (REVISED TO ADD NIF 1249)
14	13	10-4-76	REVISED TO ADD APPROXIMATE MAT. (REVISED TO ADD NIF 1249)
15	14	10-4-76	REVISED TO ADD APPROXIMATE MAT. (REVISED TO ADD NIF 1249)
16	15	10-4-76	REVISED TO ADD APPROXIMATE MAT. (REVISED TO ADD NIF 1249)
17	16	10-4-76	REVISED TO ADD APPROXIMATE MAT. (REVISED TO ADD NIF 1249)
18	17	10-4-76	REVISED TO ADD APPROXIMATE MAT. (REVISED TO ADD NIF 1249)
19	18	10-4-76	REVISED TO ADD APPROXIMATE MAT. (REVISED TO ADD NIF 1249)
20	19	10-4-76	REVISED TO ADD APPROXIMATE MAT. (REVISED TO ADD NIF 1249)
21	20	10-4-76	REVISED TO ADD APPROXIMATE MAT. (REVISED TO ADD NIF 1249)
22	21	10-4-76	REVISED TO ADD APPROXIMATE MAT. (REVISED TO ADD NIF 1249)



REVISED MAT. (10) TO SW	10	7-21-77	ADD
REVISED MAT. (10) TO SW	9	7-21-77	ADD
REVISED MAT. (10) TO SW	8	7-21-77	ADD
REVISED MAT. (10) TO SW	7	7-21-77	ADD
REVISED MAT. (10) TO SW	6	7-21-77	ADD
REVISED MAT. (10) TO SW	5	7-21-77	ADD
REVISED MAT. (10) TO SW	4	7-21-77	ADD
REVISED MAT. (10) TO SW	3	7-21-77	ADD
REVISED MAT. (10) TO SW	2	7-21-77	ADD
REVISED MAT. (10) TO SW	1	7-21-77	ADD
REVISED MAT. (10) TO SW	0	7-21-77	ADD

32

PDR RIDS

8903230496

