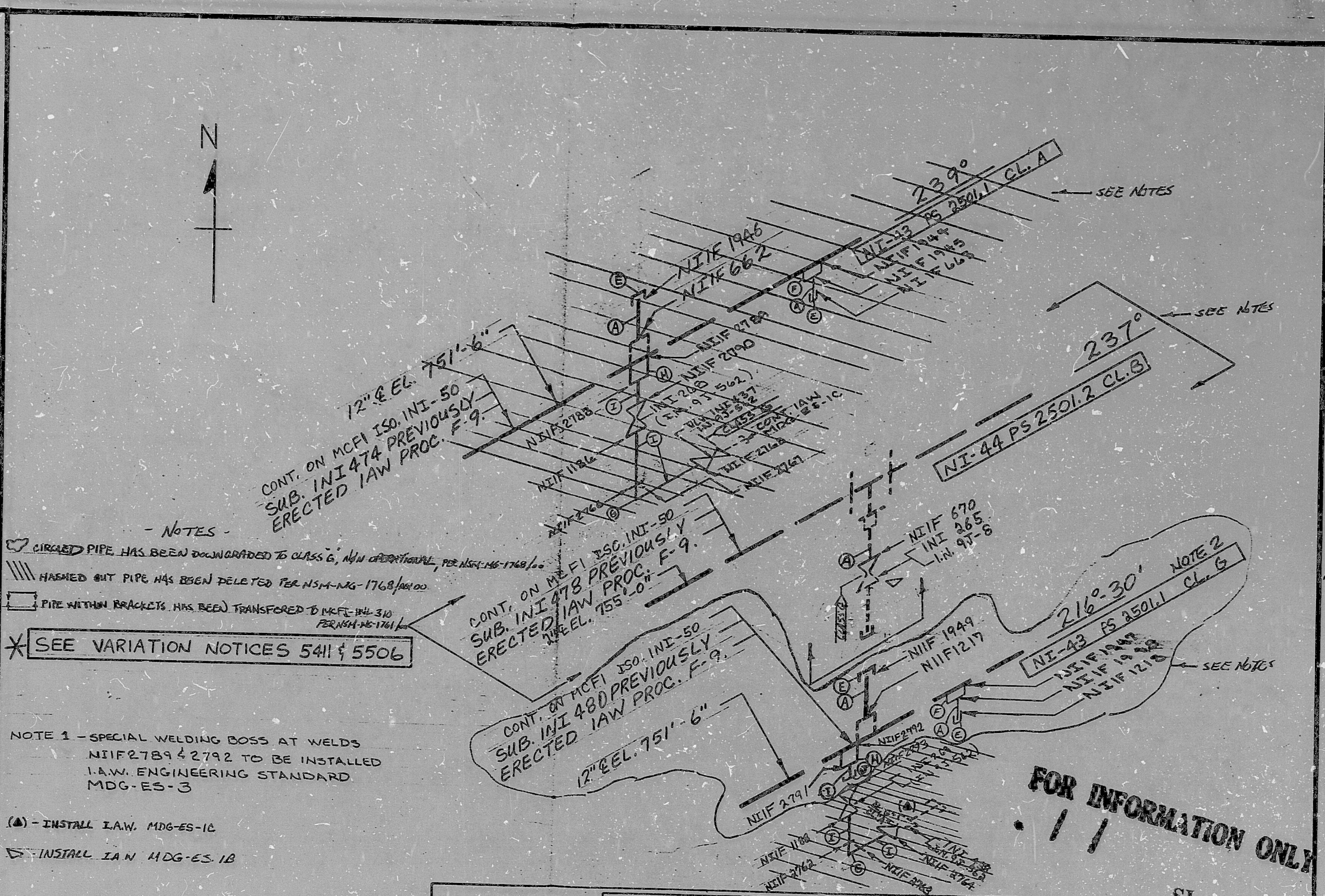


ISO. NO.: MCFI-INI 27  
 DUKE PIPING CLASS: A & B  
 SYSTEM SYMBOL: NI-SAFETY INJECTION REAC. #1  
 PIPING SPEC.: NI-43, 44 PS 2501.1 & 2501.2  
 DRAWING NO.: MC-1414-09.20-07108  
 PROJECT: MCGUIRE

REV.	DATE	BY	DESCRIPTION
13	5-2-77	SKR	REVISED LINES AT VLVS. 2, 6, 2, 2, 6, 9 ADDED WELDS 1215, 170
12	10-17-76	SKR	REVISED PER V.N. 5581
11	7-13-76	SKR	REL. FOR CONST.
10	7-13-76	SKR	
9	7-13-76	SKR	
8	7-13-76	SKR	
7	7-13-76	SKR	
6	7-13-76	SKR	
5	7-13-76	SKR	
4	7-13-76	SKR	
3	7-13-76	SKR	
2	7-13-76	SKR	
1	7-13-76	SKR	



- NOTES
- CIRCLED PIPE HAS BEEN DOWNGRADED TO CLASS G, N/A OPERATIONAL, PER NSM-NG-1768/100
  - ▨ HARMED BUT PIPE HAS BEEN DELETED PER NSM-NG-1768/100
  - PIPE WITHIN BRACKETS HAS BEEN TRANSFERRED TO MCFI-INI 310 PER NSM-NG-1768/100
  - \* SEE VARIATION NOTICES 5411 & 5506

NOTE 1 - SPECIAL WELDING BOSS AT WELDS NIIF 2789 & 2792 TO BE INSTALLED I.A.W. ENGINEERING STANDARD MDG-ES-3

- (▲) - INSTALL I.A.W. MDG-ES-1C
- (▽) - INSTALL I.A.W. MDG-ES-1B

NO.	REVISION	DATE	BY	DESCRIPTION
13		5-2-77	SKR	DELETED WELDS 652, 663, 1186, 1188, 1944, 1945, 1946, 2123, 2244, 2744, 2745, 2746, 2747, 2748, 2749, 2750, 2751, 2752, 2753, 2754, 2755, 2756, 2757, 2758, 2759, 2760, 2761, 2762, 2763, 2764, 2765, 2766, 2767, 2768, 2769, 2770, 2771, 2772, 2773, 2774, 2775, 2776, 2777, 2778, 2779, 2780, 2781, 2782, 2783, 2784, 2785, 2786, 2787, 2788, 2789, 2790, 2791, 2792, 2793, 2794, 2795, 2796, 2797, 2798, 2799, 2800, 2801, 2802, 2803, 2804, 2805, 2806, 2807, 2808, 2809, 2810, 2811, 2812, 2813, 2814, 2815, 2816, 2817, 2818, 2819, 2820, 2821, 2822, 2823, 2824, 2825, 2826, 2827, 2828, 2829, 2830, 2831, 2832, 2833, 2834, 2835, 2836, 2837, 2838, 2839, 2840, 2841, 2842, 2843, 2844, 2845, 2846, 2847, 2848, 2849, 2850, 2851, 2852, 2853, 2854, 2855, 2856, 2857, 2858, 2859, 2860, 2861, 2862, 2863, 2864, 2865, 2866, 2867, 2868, 2869, 2870, 2871, 2872, 2873, 2874, 2875, 2876, 2877, 2878, 2879, 2880, 2881, 2882, 2883, 2884, 2885, 2886, 2887, 2888, 2889, 2890, 2891, 2892, 2893, 2894, 2895, 2896, 2897, 2898, 2899, 2900, 2901, 2902, 2903, 2904, 2905, 2906, 2907, 2908, 2909, 2910, 2911, 2912, 2913, 2914, 2915, 2916, 2917, 2918, 2919, 2920, 2921, 2922, 2923, 2924, 2925, 2926, 2927, 2928, 2929, 2930, 2931, 2932, 2933, 2934, 2935, 2936, 2937, 2938, 2939, 2940, 2941, 2942, 2943, 2944, 2945, 2946, 2947, 2948, 2949, 2950, 2951, 2952, 2953, 2954, 2955, 2956, 2957, 2958, 2959, 2960, 2961, 2962, 2963, 2964, 2965, 2966, 2967, 2968, 2969, 2970, 2971, 2972, 2973, 2974, 2975, 2976, 2977, 2978, 2979, 2980, 2981, 2982, 2983, 2984, 2985, 2986, 2987, 2988, 2989, 2990, 2991, 2992, 2993, 2994, 2995, 2996, 2997, 2998, 2999, 3000
12		10-17-76	SKR	REVISE TO DOWNGRADE & DELETE WELD NIIF 1187 AND MAT. B TO CL. G & ADD NOTE 1
11		7-13-76	SKR	ROTATED VALVE INI 438 180° (V.N. 27, 042)
10		7-13-76	SKR	ADD NOTE 1
9		7-13-76	SKR	SHUT DOWN 3416 DELETED WELDS 2769, 2765 ADDED WELDS 2789, 2788, 2740 TO 2793 CHANGE POSITION OF VALVE INI 317 (V.N. 27, 27, 27, 27)
8		7-13-76	SKR	REVISED TO CORRECT WELD 2766 FROM UNIT 2 WELD TO A UNIT ONE WELD
7		7-13-76	SKR	REVISED TO CORRECT WELDS 2767 THRU 2769 FROM UNIT 2 WELDS TO UNIT ONE WELDS...
6		7-13-76	SKR	ADDED WELDS NIIF 2762 THRU 2769, VLVS 437, 438, (LAYOUT)
5		7-13-76	SKR	ADDED CONTINUATION OF ISO. TO ISO. INI-50 AND TURN VALVE INI 265 FROM VENT TO DRAIN (PER LAYOUT)

— BILL OF MATERIAL —

(A)	3/4" PIPE, SA-376, TP-304, SCH.160, .219" WALL (APP. 2'-0") 55
(E)	3/4" PIPE CAP, S.W., (SA-182, F-304) OR (SA-403, WP-304), 6000 # 55
(F)	3/4" SPEC. WELD. BOSS, (SA-182, F-304) OR (SA-403, WP-304), 6000 # (INSTALL 55 I.A.W. MDG-ES-2 AND MDG-ES-3)
(S)	2" 90° ELBOW, (SA-182, F-304) OR (SA-403, WP-304), 6000 # 55 FSSW
(H)	2" WELDING BOSS; (SA-182, F-304) OR (SA-403, WP-304), 6000 # 55 FSSW
(J)	2" PIPE SA-376, TP-304 SCH-160 55
(K)	2" PIPE CAP (SA-182, F-304) OR (SA-403, WP-304) 3000 # FSSW

FOR INFORMATION ONLY  
 SI APERTURE CARD



30

PDR RIDS

8903230483

