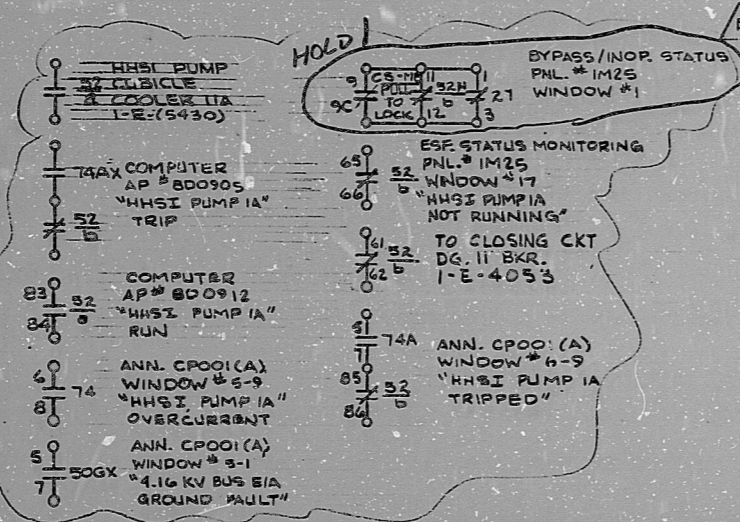


INFORMATION
THIS DOCUMENT IS
SUBJECT TO REVISION
WITHOUT NOTIFICATION
TO THE USER OF THIS
COPY



TERA
APERTURE
CARD

CS/TEST		POSITION				CS/TEST
(HANDLE END)		CLOSE	NOVM	TRIP	USE	NORMAL
1C2C 2 1				X	CONT	TRIP
0-100-10 2		X			CONT	CLOSE

SPRING RETURN TO NORMAL
X DENOTES CONTACT CLOSED
C.E. 58M - (SPECIAL)

CS-MB		POSITION				HHSI PUMP IA
(HANDLE END)		START	AUTO	STOP	PULL TO LOCK	USE
1 1C2C 2 1					X	CONT
0-100-10 2				X	X	SP
3 3C4C 4 3				X		CONT
0-100-10 4			X			SP
5 5C6C 6 5			X			CONT
0-100-10 6		X				SP
7 7C8C 8 7		X	X			CONT
0-100-10 8		X	X	X		CONT
9 9C10C 9					X	CONT
0-100-10 10					X	SP

SPRING RETURN TO AUTO
MAINTAINED PULL TO LOCK
X DENOTES CONTACT CLOSED
C.E. 58M - (SPECIAL)

- REFERENCE DRAWINGS
- I-2-3390-SH.1 - SAFETY INJECTION HHSI & LHSI PUMPS LOGIC DIAGRAM
 - C.E. 3105 - ELECT. WIRING STANDARDS & SYMBOLS
 - (W) 271C333-SH31 - HHSI PUMP 'A' B&R FILE NO. R011506WN
 - I-E-4639 - CONTROL WIRING DIAGRAM FOR HIGH HEAD SAFETY INJECTION PUMP 'IA'
 - 52769D281 - SCHEM. DIAG 4.16 KV SWGR EIA CUB. 5 (GUILD) B&R FILE NO. E159X044GU
 - 52769E293 - CONN. DIAG. 4.16KV SWGR. EIA CUB. 5 (GUILD) B&R FILE NO. E151X061GU
- LEGEND
- 57H - CIRCUIT BREAKER CELL SWITCH
 - 74, 74A, 74AX - ALARM RELAY
 - 27 - CONTROL POWER NOT AVAILABLE

4160V ESF SWGR EIA CUB. 5
MECH. EQUIP. N^o 2N12INPA101A

NUCLEAR SAFETY RELATED

CLASS IE

PKG 008	SUFF 101	ACT 581
DRAWING TITLE ELECTRICAL	CONTRACT NO. SCALE CR-0241 NONE	DRAWING NO 4-N-12
ELEMENTARY DIAGRAM	DRAWING NO I-E-4639-B	
HIGH HEAD SAFETY INJECTION PUMP 'IA'		

INFORMATION PRELIMINARY REVIEW USE CONSTRUCTION

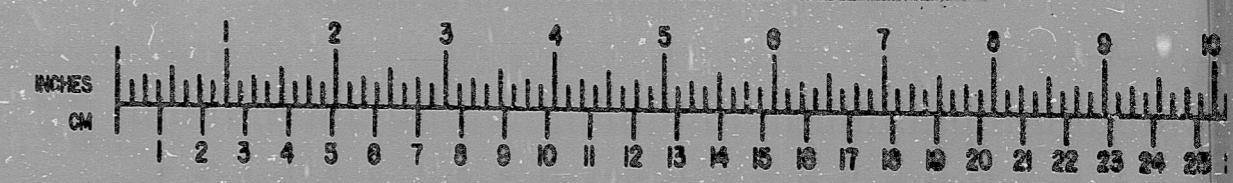
DATE	DESCRIPTION	BY	CHK	ENG	ISSR	CONV	DATE	DESCRIPTION	BY	CHK	ENG	ISSR	CONV	DATE
	ISSUED FOR USE													
	ISSUED FOR REVIEW & COMMENT													

SOUTH TEXAS PROJECT

Brown & Root Inc.
ENGINEERS-CONSTRUCTORS
HOUSTON, TEXAS

BROWN & ROOT INC.
MICROFILM SERVICES

THURSDAY, MAR. 13 1980



MICROFILMED MAR 13 1980

17

17

RIDS

8112170540

