

INFORMATION
THIS DOCUMENT IS
SUBJECT TO REVISION
WITHOUT NOTIFICATION
TO THE USER OF THIS
COPY

49X
ANN. CPOOI(A)
WINDOW #4-9
"SI/RHR TRAIN A
VALVE OVERLOAD"

33
BYPASS/INOP. STATUS
PNL # IM25 - WINDOW #10
"HHSI PUMP IA
DISCHARGE VALVE"

CS-MB (1540) HHSI PUMP IA DISCH XSI004A

BLOCK	CONTACT	POSITION			USE
		CLOSE	NORM	OPEN	
A	NC(1)	X			CONT
	NO(2)			X	SP
B	NC(3)	X			SP
	NO(4)			X	CONT

SPRING RETURN TO NORMAL
X-DENOTES CONTACT CLOSED
G.E. CAT. # CR2940US203A

CONTACT	VALVE POSITION		USE
	CLOSE	OPEN	
1			THIS DWG
2			SPARE
3			THIS DWG
4			THIS DWG
5			THIS DWG
6			SPARE
7			THIS DWG
8			SPARE
9			SPARE
10			SPARE
11			THIS DWG
12			SPARE
13			SPARE
14			SPARE
15			SPARE
16			SPARE
17			OPENS ON MECH. OVERLOAD ON CLOSING THIS DWG
18			OPENS ON MECH. OVERLOAD ON OPENING THIS DWG

REFERENCE DRAWINGS

- 0-E-0103 - ELECT. WIRING STANDARDS & SYMBOLS
- 1-E-3332-SH-G - HHSI PUMPS I LMSI PUMPS DISCH VALV LOGIC DIAGRAM
- W-271333-SH-R29 - MOTOR OPERATED VALVES
- 1-E-6653 - CONTROL WIRING DIAGRAM-HHSI PUMP IA DISCHARGE VALVE XSI004A

TERA
APERTURE
CARD

480V MCC - EIA2 COMPT. H3 MECH. EQUIP. # 2121XSI004A

NUCLEAR SAFETY RELATED CLASS 1E

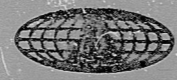
PKG: 008 | SUFF: 101 | ACT: 58

DRAWING TITLE ELECTRICAL ELEMENTARY DIAGRAM HHSI PUMP IA DISCHARGE VALVE XSI004A	CONTRACT NO. SCALE CR-0241 NONE DRAWING NO 4-N-12 1-E-4653-B
--	---

NO.	DATE	DESCRIPTION	BY	CHK	PROJ. ENG.	PROJ. MGR.	DATE
3/4/78		ISSUED FOR USE					
4/1/78		ISSUED FOR REVIEW & COMMENT					

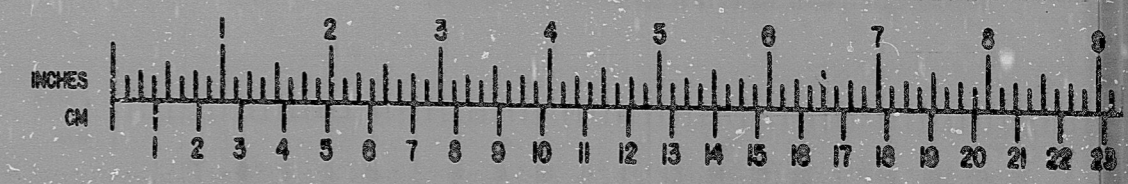
Brown & Root Inc.
ENGINEERS CONSTRUCTORS
HOUSTON, TEXAS

SOUTH TEXAS PROJECT



BROWN & ROOT INC.
MICROFILM SERVICES

WEDNESDAY, FEB. 27 1980



RIDS

811270526

