

INFORMATION
THIS DOCUMENT IS
SUBJECT TO REVISION
WITHOUT NOTIFICATION
TO THE USER OF THIS
COPY

49X ANN. CPOOL (A) WINDOW #4-9 "SI/RHR TRAIN A VALVE OVERLOAD"

27 BYPASS/INOP. STATUS PNL # IM25, WINDOW #27 "HHSI MINI-FLOW RECIRC. VALVE 12A"

33/5 CTMT SUMP ISOL. VALVE XSI016A (1-E-4674)

33/15 ESF STATUS MONITORING PNL # IM25, WINDOW #33 "HHSI MINI-FLOW RECIRC. VALVE NOT FULL CLOSED"

C5-18 (1543)

BLOCK	CONTACT	POSITION		USE
		CLOSE	OPEN	
A	NC (1)	X	X	SP
	NO (2)	X		CONT
B	NC (3)	X	X	CONT
	NO (4)		X	CONT

SPRING RETURN TO AUTO
X-DENOTES CONTACT CLOSED
G.E. LAT. CR29 & CUS403E

HHSI PUMP 'A' RECIRC. TO RWST SIO12A

AUTO CLOSE

33-SIO12A

CONTACT	VALVE POSITION		USE
	CLOSE	OPEN	
1			THIS DWG
2			SPARE
3			THIS DWG
4			THIS DWG
5			THIS DWG
6			1-E-4674
7			THIS DWG
8			SPARE
9			SPARE
10			SPARE
11			SPARE
12			SPARE
13			SPARE
14			SPARE
15			THIS DWG
16			SPARE
17	OPENS ON MECH. OVERLOAD ON CLOSING		THIS DWG
18	OPENS ON MECH. OVERLOAD ON OPENING		THIS DWG

- REFERENCE DRAWINGS
- 0-E-0105 - ELECT. WIRING STANDARDS & SYMBOLS
 - 1-Z-3392-5H.2-42 HHSI & LHSI MINI-FLOW RECIRCULATION VALVES LOGIC DIAGRAM
 - 1-E-6665 - CONTROL WIRING DIAGRAM HHSI PUMP 'A' RECIRC. TO RWST VALVE SIO12A
 - (M) 27C333-SHA43-MOTOR OPERATED VALVE 1-B012A

NOTES

CONTACT CLOSING ON AUTOMATIC RECIRCULATION

- LEGEND
- 27 - CONTROL POWER NOT AVAILABLE
 - HRR-002 - SOLID STATE PROTECTION CABINET TRIP
 - XSI016A - CTMT SUMP ISOLATION VALVE
 - RR32 - ESF MONITORING CAB-TRAIN A
 - 480V MCC-EIA2 COMPT. Q3
 - MEC EQUIP. NO. 2N1215012A

TERA APERTURE CARD

NUCLEAR SAFETY RELATED CLASS IE

PKG: 009 SUFF: 101 ACT: 581

DRAWING TITLE: ELECTRICAL

ELEMENTARY DIAGRAM

HHSI PUMP 'A' RECIRC. TO RWST VLV. SIO12A

CONTRACT NO. SCALE: CR-0241 NONE

DRAWING NO. 4-N-12

1-E-4665-B

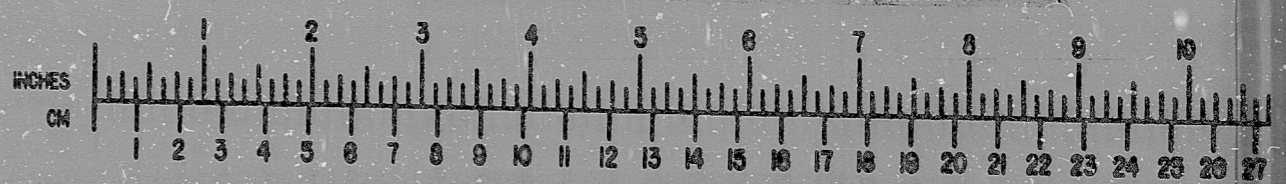
DATE	DESCRIPTION	BY	CHK	PROJ. E.L.	PROJ. MGR.

Brown & Root Inc.
ENGINEERS-CONSTRUCTORS
HOUSTON, TEXAS

SOUTH TEXAS PROJECT

BROWN & ROOT INC.
MICROFILM SERVICES

WEDNESDAY, FEB. 27 1968



RIPS

812170513

