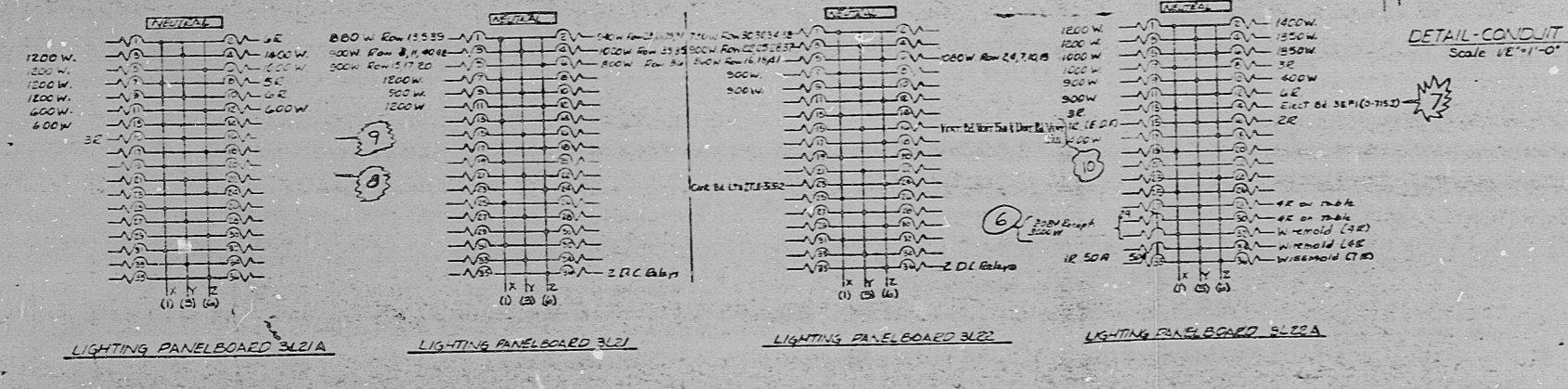


PLAN AT ELEVATION 822'-0"
SCALE 3/4" = 1'-0"

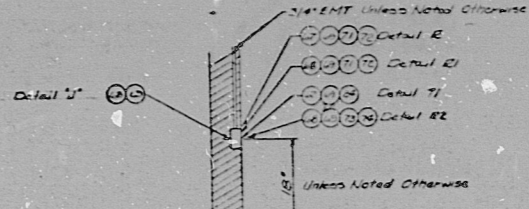


LIGHTING PANELBOARD 3L21A

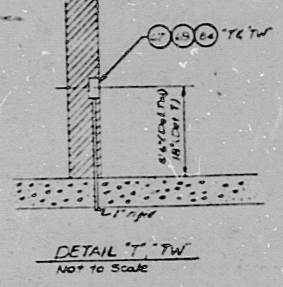
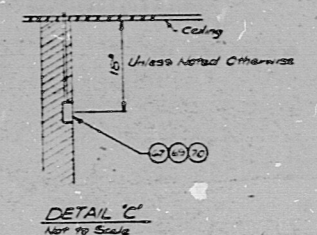
LIGHTING PANELBOARD 3L21B

LIGHTING PANELBOARD 3L21C

LIGHTING PANELBOARD 3L21D



DETAIL '2'
DETAIL '21'
DETAIL '22'
DETAIL '23'
DETAIL '24'
NOT TO SCALE



NOTES

- All Lighting Appliance shall be at Elevation 822'-0" to centerline.
- All Lighting Appliance shall have 6" min. base conduct to terminate above ceiling in location to provide required fire branch circuit.
- All conduct to ceiling shall be run in 1/2" EMT (Schedule 40).
- All conduct and conduit installation shall be in 1/2" EMT.
- Install 1/2" EMT from ceiling to wall base. Remove inside on exterior to cable in conduit to panel 3L21A.

- (P) See DWG No. O-2846 DENOTES LIGHTING CIRCUIT PANELBOARDS
- (X) DENOTES ACCESS TO AREA
- (●) DENOTES AC EMERGENCY LIGHTING A+B
- (○) DENOTES NORMAL LIGHTING
- (○) DENOTES DC EMERGENCY LIGHTING

SYMBOLS

- Detail E & D. Use detail E for Plaster on Form walls & R for other walls.
- Detail A1 with 1/2" EMT AC Conduit.
- 1 inch conduit capped flush with floor and bottom of slab.
- 1 inch offset conduit sleeve, same as above.
- Detail C, 120 volt clock outlet.
- Detail T, Telephone wall outlet.
- Detail T at elevation 8'-6" above floor, outlet for wall mounted telephone.
- Electronic Calculator outlet see detail 'T' case 'C' above ceiling.
- Electronic Calculator outlet see detail 'T' case 'C' below slab.

REFERENCE DWGS

- O-2846 EMT on Wall
- O-2846 Lighting on Wall
- O-2846 Structural Plan
- O-2846 Foundation
- O-2846 Control Room Elev. 822'-0"

1	Revised as noted	2	Added 120 volt clock outlet
3	Added 120 volt clock outlet	4	Added 120 volt clock outlet
5	Added 120 volt clock outlet	6	Added 120 volt clock outlet
7	Added 120 volt clock outlet	8	Added 120 volt clock outlet
9	Added 120 volt clock outlet	10	Added 120 volt clock outlet
11	Added 120 volt clock outlet	12	Added 120 volt clock outlet

TERA APERTURE CARD

OCONEE NUCLEAR STATION UNIT 3
LIGHTING CONTROL ROOM
RECEPTACLE PLAN
O-2846A
K 8-1

8001080 853 P

11

11

11

8.5"

11"

17"

800108085-3

