

INFORMATION  
THIS DOCUMENT IS  
SUBJECT TO REVISION  
WITHOUT NOTIFICATION  
TO THE USER OF THIS  
COPY

- 49X ANN. CPOOL (A) WINDOW #4-9 "SI/RHR TRAIN A VALVE OVERLOAD"
- 27 BYPASS/INOP. STATUS PNL # 1M25, WINDOW #29 "LHSI MINI-FLOW RECIRC. VALVE 14A"
- 33 CTMT SUMP ISOL. VALVE XSI016A (1-E-4674)
- 35 ESP STATUS MONITORING PNL # 1M25, WINDOW #35 "LHSI MINI-FLOW RECIRC. VALVE NOT FULL CLOSED"

BLOCK	CONTACT	POSITION			USE
		CLOSE	AUTO	OPEN	
A	NC (1)		X	X	SP
	NO (2)	X			CONT
B	NC (3)	X	X		CONT
	NO (4)			X	CONT

SPRING RETURN TO AUTO  
X-DENOTES CONTACT CLOSED  
G.E. CAT. # CR2940US203E

TERA  
APERTURE  
CARD

LHSI PUMP IA  
RECIRC. TO RWST  
S1014A

CONTACT	VALVE POSITION		USE
	CLOSE	OPEN	
1			THIS DWG
2			SPARE
3			THIS DWG
4			THIS DWG
5			THIS DWG
6			THIS DWG
7			THIS DWG
8			SPARE
9			SPARE
10			SPARE
11			THIS DWG
12			SPARE
13			SPARE
14			SPARE
15			SPARE
16			THIS DWG
17			SPARE
18	OPENS ON MECH. OVERLOAD ON CLOSING		THIS DWG
19	OPENS ON MECH. OVERLOAD ON OPENING		THIS DWG

REFERENCE DRAWINGS

- 0-E-0105 - ELEC. WIRING STANDARDS & SYMBOLS
- 1-Z-3372-SH-2 - SI HHSI & LHSI MINI-FLOW RECIRCULATION VALVES LOGIC DIAGRAM
- 1-E-6671 - CONTROL WIRING DIAGRAM LHSI PUMP IA RECIRC. TO RWST VALVE S1014A
- 271C333-3A49 - MOTOR OPERATED VALVE 1-2814-B

NOTES

-CONTACT CLOSING ON AUTOMATIC RECIRCULATION

LEGEND

- 27 - CONTROL POWER NOT AVAILABLE
- RR-002 - SOLID STATE PROTECTION CABINET TRAIN-X
- XSI016-C - STEM MTD LIMIT SW ON CTMT SUMP ISOL. VALVE XSI016C
- RR32 - ESP MONITORING CAB-TRAIN A
- 480V MCC-EIA2 COMPT. (2)
- MECH. EQUIP. NO. 2N121TS1014A

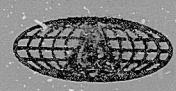
NUCLEAR SAFETY RELATED  
CLASS 1E

PKG: 008	SUFF: 101	ACT: 581
DRAWING TITLE ELECTRICAL	CONTRACT NO CR-0241	SCALE NONE
ELEMENTARY DIAGRAM LHSI PUMP IA RECIRC TO RWST VLV S1014A	DRAWING NO 4-N-12	

DATE	DESCRIPTION	BY	CHK	ENG	MGR	DATE	DESCRIPTION	BY	CHK	ENG	MGR
1/24/82	ISSUED FOR USE	DO	DO	DO	DO						
1/24/82	ISSUED FOR REVIEW & COMMENT	A.S.	HEF	DO	DO						

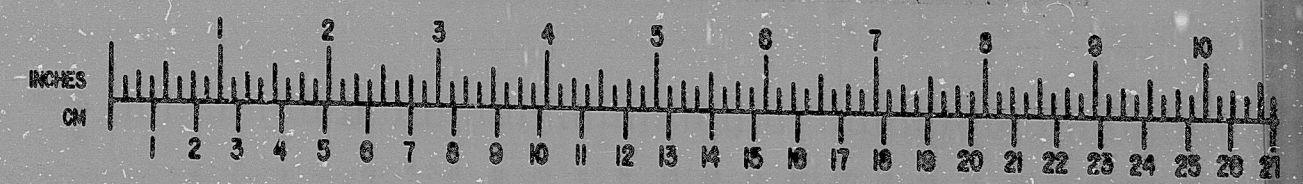


SOUTH TEXAS  
PROJECT



BROWN & ROOT INC.  
MICROFILM SERVICES

WEDNESDAY, FEB. 27 1982





RIDS

8112170507

