

1-29-W 99801

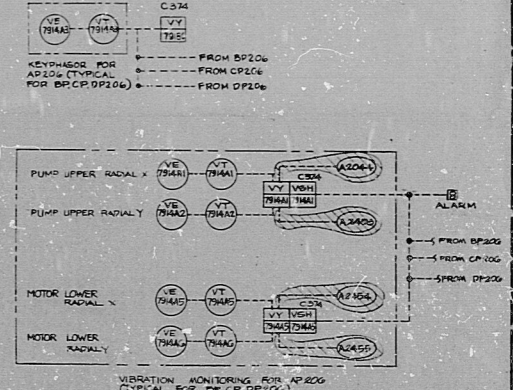
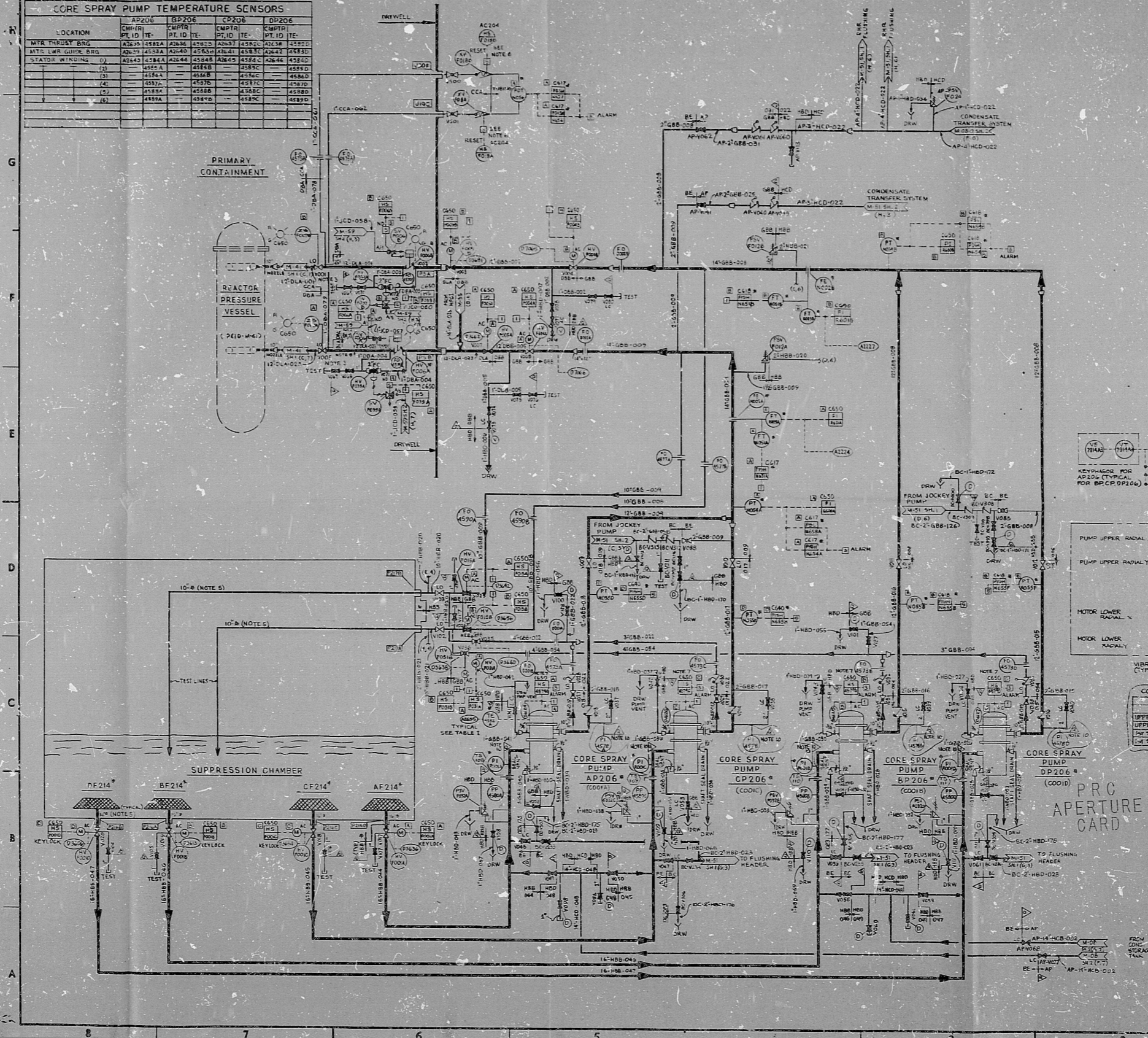
SYSTEM BE

TABLE I
CORE SPRAY PUMP TEMPERATURE SENSORS

LOCATION	AP206		BP206		CP206		DP206	
	CH. ID	PT. ID	CH. ID	PT. ID	CH. ID	PT. ID	CH. ID	PT. ID
MYR TURBINE BRG	A225A	A225B	A226A	A226B	A227A	A227B	A228A	A228B
MTR LWR GUIDE BRG	A229A	A229B	A230A	A230B	A231A	A231B	A232A	A232B
STATOR WINDING (1)	A233A	A233B	A234A	A234B	A235A	A235B	A236A	A236B
(2)	A237A	A237B	A238A	A238B	A239A	A239B	A240A	A240B
(3)	A241A	A241B	A242A	A242B	A243A	A243B	A244A	A244B
(4)	A245A	A245B	A246A	A246B	A247A	A247B	A248A	A248B
(5)	A249A	A249B	A250A	A250B	A251A	A251B	A252A	A252B
(6)	A253A	A253B	A254A	A254B	A255A	A255B	A256A	A256B

REF	REFERENCE DRAWINGS	BESITEL NO	GE NO
1	LOGIC DIAGRAM	1-152-0	1-152-0
2	PLANT LEAK DETECTION	1-152-1	1-152-1
3	AUX DEFUR-PURIFICATION	1-152-2	1-152-2
4	LOGIC DIAGRAM	1-152-3	1-152-3
5	SEISMIC MONITORING	1-152-4	1-152-4
6	VIBRATION MONITORING	1-152-5	1-152-5
7	LOOP DIAGRAM	1-152-6	1-152-6
8	GE ELEMENTARY CORE SPRAY	1-152-7	1-152-7

- NOTES:
- THE GE MPL NUMBER FOR THIS SYSTEM IS E21
 - THIS P&ID CONTAINS SYSTEMS OR PORTIONS OF SYSTEMS:
 - AP-GENERATOR STORAGE & TRANSFER
 - BC-RESIDUAL HEAT REMOVAL
 - BE-REACTOR CORE SPRAY
 - VALVES V000 & V001 CORRESPOND TO G.E. VALVES V007A & B
 - A COMMON SUMMARY ALARM IS USED BY ALL THE ECCS FLOODING ALARMS. SEE REF. 344
 - SEE CIVIL DRAWING 1055-C-0031 (C) FOR THE PRESSURE BATHING MATERIAL & COOL. PIPING OF PIPING WITHIN THE SUPPRESSION CHAMBER
 - EXCESS FLOW CHECK VALVE STATUS LIGHTS AND RESET SWITCHES ARE LOCATED ON LOCAL PANELS AS NOTED. ALARMS AND COMPUTER READOUTS FOR ABNORMAL CONDITIONS WILL BE MONITORED FROM THE CONTROL ROOM. SEE REF. 6
 - THE G.E. NUMBERS FOR SWITCHES HEAT5A THRU 0 ARE E21-55A THRU 55I RESPECTIVELY.
 - TWO SEISMIC MONITORING SENSORS (TAG NUMBERS 0-06-017866 AND 0-06-017871) ARE LOCATED BETWEEN VALVES V000 AND V001 ON CORE SPRAY LOOP 'A' REACTOR INLET PIPING. THESE SENSORS ARE PHYSICALLY STRAPPED TO THE PIPES. THEIR FUNCTION IS TO PROVIDE SEISMIC RESPONSE INFORMATION DURING A SEISMIC EVENT. SEE REF. 7
 - DELETED
 - THE ROOT VALVES FOR PRESSURE VALVES SHOWN ON THIS P&ID SHALL BE NORMALLY CLOSED FOR ISOLATION PURPOSES AND OPENED FOR THE DURATION OF THE MEASUREMENT.



COMPUTER POINTS FOR VIBRATION MONITORING

SENSOR	AP206	BP206	CP206	DP206
UPPER RADIAL	A233A	A233B	A234A	A234B
UPPER RADIAL	A235A	A235B	A236A	A236B
UPPER RADIAL	A237A	A237B	A238A	A238B
UPPER RADIAL	A239A	A239B	A240A	A240B
LOWER RADIAL	A241A	A241B	A242A	A242B
LOWER RADIAL	A243A	A243B	A244A	A244B

REVISIONS

NO.	DESCRIPTION	DATE	BY	CHKD.
1	ISSUED FOR CONSTRUCTION	10/1/78	J. HAN	G. CAMS
2	REVISION PER LIST OF REVISIONS	10/1/78	J. HAN	G. CAMS
3	REVISION PER LIST OF REVISIONS	10/1/78	J. HAN	G. CAMS
4	REVISION PER LIST OF REVISIONS	10/1/78	J. HAN	G. CAMS
5	REVISION PER LIST OF REVISIONS	10/1/78	J. HAN	G. CAMS
6	REVISION PER LIST OF REVISIONS	10/1/78	J. HAN	G. CAMS
7	REVISION PER LIST OF REVISIONS	10/1/78	J. HAN	G. CAMS
8	REVISION PER LIST OF REVISIONS	10/1/78	J. HAN	G. CAMS
9	REVISION PER LIST OF REVISIONS	10/1/78	J. HAN	G. CAMS
10	REVISION PER LIST OF REVISIONS	10/1/78	J. HAN	G. CAMS

E. HAN
 G. CAMS
BESITEL
 SAN FRANCISCO
 PUBLIC SERVICE ELECTRIC AND GAS COMPANY
 HOPE CREEK GENERATING STATION
 P&ID
 CORE SPRAY
 JOB NO. M-52-1
 REV. 9 Q

22"
17"
11"
8.5"
11"
17"
22"

22"
17"
11"
8.5"
11"
17"
22"

RIDS

8307260100

