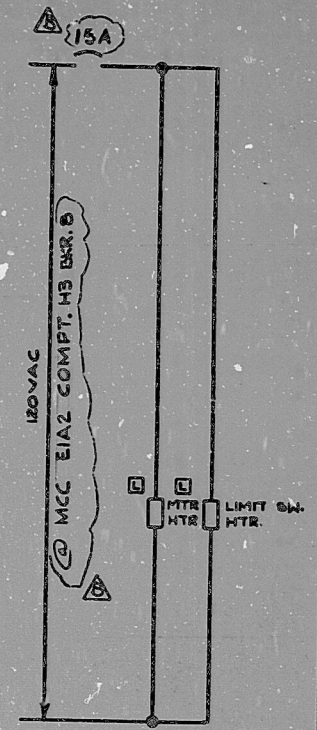


INFORMATION
THIS DOCUMENT IS
SUBJECT TO REVISION,
WITHOUT NOTIFICATION,
TO THE USER OF THIS
COPY



TO ANN CPOOL
SI/RHR
49X TRAIN A VLV.
OVERLOAD
4-5

33
BYPASS/INOPERATIVE
STATUS
(1-E-4677)

CS-MB (1538)

BLOCK	CONTACT	POSITION			USE
		CLOSE	NORM	OPEN	
A	NC (1)	X			CONT
	NO (2)			X	CONT
B	NC (3)	X			SP
	NO (4)			X	SP

LHSI PUMP IA DISCH. XS1018 A

SPRING RETURN TO NORMAL
X DENOTES CONTACT CLOSED
G.E. CAT. # CR2940US203A

33-XS1018A

CONTACT	VALVE POSITION		USE
	CLOSE	OPEN	
1			THIS DWG
2			SPARE
3			THIS DWG
4			THIS DWG
5			THIS DWG
6			SPARE
7			THIS DWG
8			SPARE
9			SPARE
10			SPARE
11			SPARE
12			THIS DWG
13			SPARE
14			SPARE
15			SPARE
16			SPARE
17			OPENS ON MECH. OVERLOAD ON CLOSING THIS DWG
18			OPENS ON MECH. OVERLOAD ON OPENING THIS DWG

- REFERENCE DRAWINGS
- 0-E-0103 - ELECT. WIRING STANDARDS & SYMBOLS
 - 1-2-3392-SH.6 - MHS PUMPS & LHSI PUMPS DISCH VLV. LOGIC DIAGRAM
 - 1-E-6677 - CONTROL WIRING DIAGRAM LHSI PUMP IA DISCH. VALVE XS1018A
 - W271C333-SH428-MOTOR OPERATED VALVES

TERA
APERTURE
CARD

480V MCC-EIA2 COMPT. B2
MECH. EQUIP. NO 2N121XS1018A

NUCLEAR SAFETY RELATED
CLASS 1E

PKG:008A SUFF:101 ACT:581

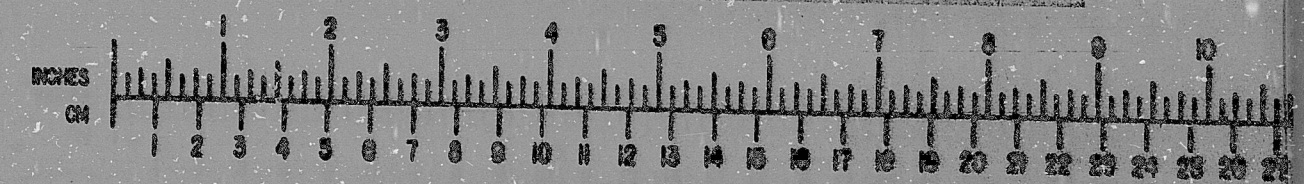
DRAWING TITLE ELECTRICAL ELEMENTARY DIAGRAM LHSI PUMP IA DISCHARGE VALVE XS1018A	CONTRACT NO. SCALE CR-0241 NONE DRAWING NO 4-N-12 1-E-4677-B
--	--

ISSUED FOR USE	REVISION	DATE	BY	CHK	PROJ. ENG.	PROJ. MGR.	DEPT.	DATE	DESCRIPTION	BY	CHK	PROJ. ENG.	PROJ. MGR.
B													
A													
ISSUED FOR REVIEW & COMMENT													
DATE													

Brown & Root Inc.
ENGINEERS CONSTRUCTORS
HOUSTON, TEXAS

SOUTH TEXAS PROJECT

BROWN & ROOT INC.
MICROFILM SERVICES



FRIDAY, AUG. 3, 1979

RIDS

8112170355

