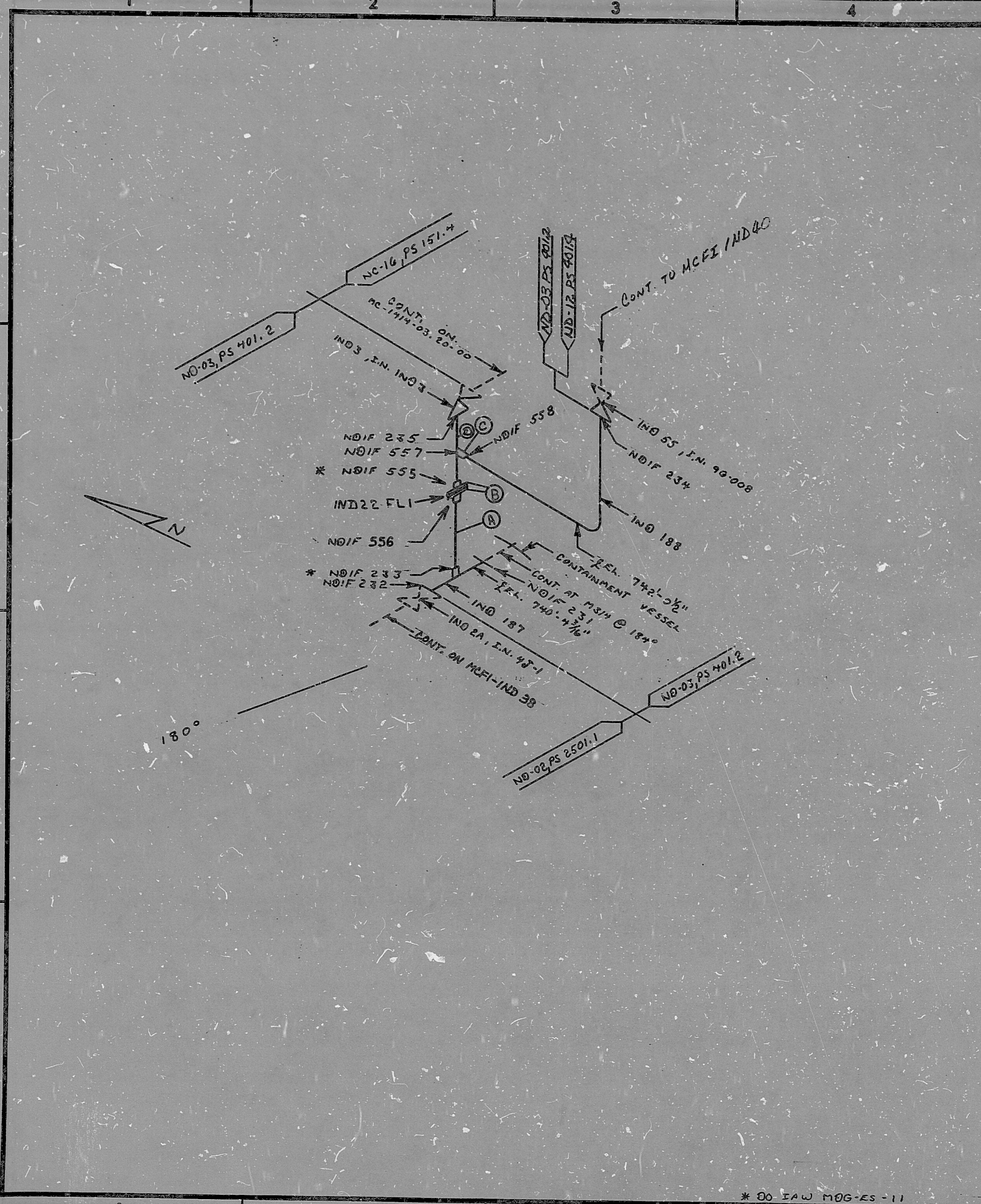


D
C
B
A



INSERVICE INSPECTOR

REVISIONS BLOCK				
GRD	REV. NO.	DESCRIPTION	ORIG. DATE	APPROV. DATE
	0	REL. FOR CONST.	VN 20963	9/17/79
	1	RELOCATED WELD 555+556+557 MAT A	VN 20973	3/10/79
	2	REF. MDG-ES-18; DELETED CONT.		4-18-80
C-2	3	ADDED CONT. OF ISO. @ VLV. IND 3A		11-5-80
C-3	4	ADD CONT. & CHANGE FLAG AT VLV. IND 55 PER V.N. P. 587		2-18-81

FOR INFORMATION ONLY
SI
APERTURE
CARD

ITEM	SIZE	DES.	SPEC./GRADE	SCH./RATE	REMARKS
(D)	4"	PIPE	SA-312, TP-304	80	SMLS/ELW
(C)	3/4"	H/C PLG	SA-182, F-304	3000	SMLS/ELW
(B)	4"	FLANGE	SA-182, F-304	600	R.F.W.N.
(A)	4"	PIPE	SA-312, TP-304	10	SMLS/ELW

OR

BILL OF MATERIAL

LAST WELD NO. NA DUKE POWER COMPANY LAST FL. NO. 1
McGUIRE NUCLEAR STATION

NUCLEAR SAFETY RELATED YES NO BUILDING: REACTOR ZONE: R-4

PIPE SPEC: PS, 401.2 SYS. SYMBOL: ND SEC. NO: 03 DRAWING NO: MC-1414-04, 20-00 +20-01 EL: 740'-0"

APPLICABLE CODE: ASME SECT. III CLASS: B ISO. NO: MCFI-IND 22 REV: 4

* 80 SAW MDG-ES-11

PDR RIDS

14

8903230314

