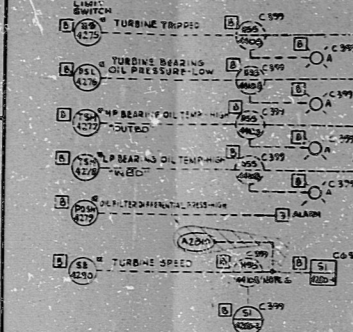


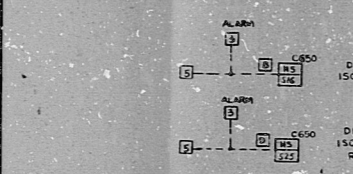
09-N 59801

SYSTEM FC

TURBINE SUPERVISORY INSTRUMENTATION ALARMS



TURBINE CONTROL SYSTEM

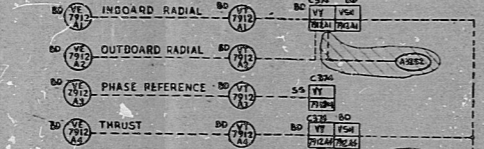


OIL PIPING COMPONENTS FOR THE RCIC TURBINE

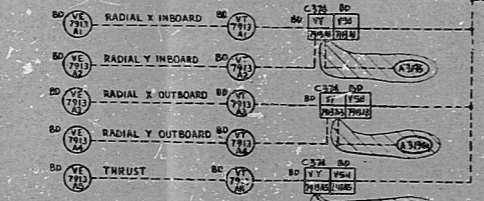
QUAN.	DESCRIPTION	VENOR ITEM NO.	BECHTEL ITEM NO.
1	MAIN OIL PUMP	1	10 P 271
1	GOVERNOR (WOODWARD GOV. HYDRAULIC ACTUATOR) (WOODWARD SERVO)	2	10 S 221
2	RELIEF VALVE	4	POV 5785
1	DUPLEX STRAINER	5	W 17 218
1	OIL COOLER	6	10 E 212
1	LOW PRESSURE OIL SWITCH (SEE H, B)	7	PLC 4276
3	OIL PRESSURE GAUGE (O-S)	8	PO-5746, 718
2	SAFETY DEVICES	9	FO-5709, 670
2	DRIVE THERMOSTATS BEARING OIL TRIP (S&B/S)	10	TSN 4277, 6
1	SAFETY DEVICE	11	FO-5797
1	SHUNT FLOW INDICATOR	12	FA-5792
1	SAFETY ORIFICE	13	FO-5793
1	OIL FILTER DIFF. PRESS. SW. (S&B/S)	14	10 S 4279

NOTE: THE OIL PIPING SYSTEM IS DEPICTED ON RCIC TURBINE INSTRUCTION MANUAL (SEE REF. 6)

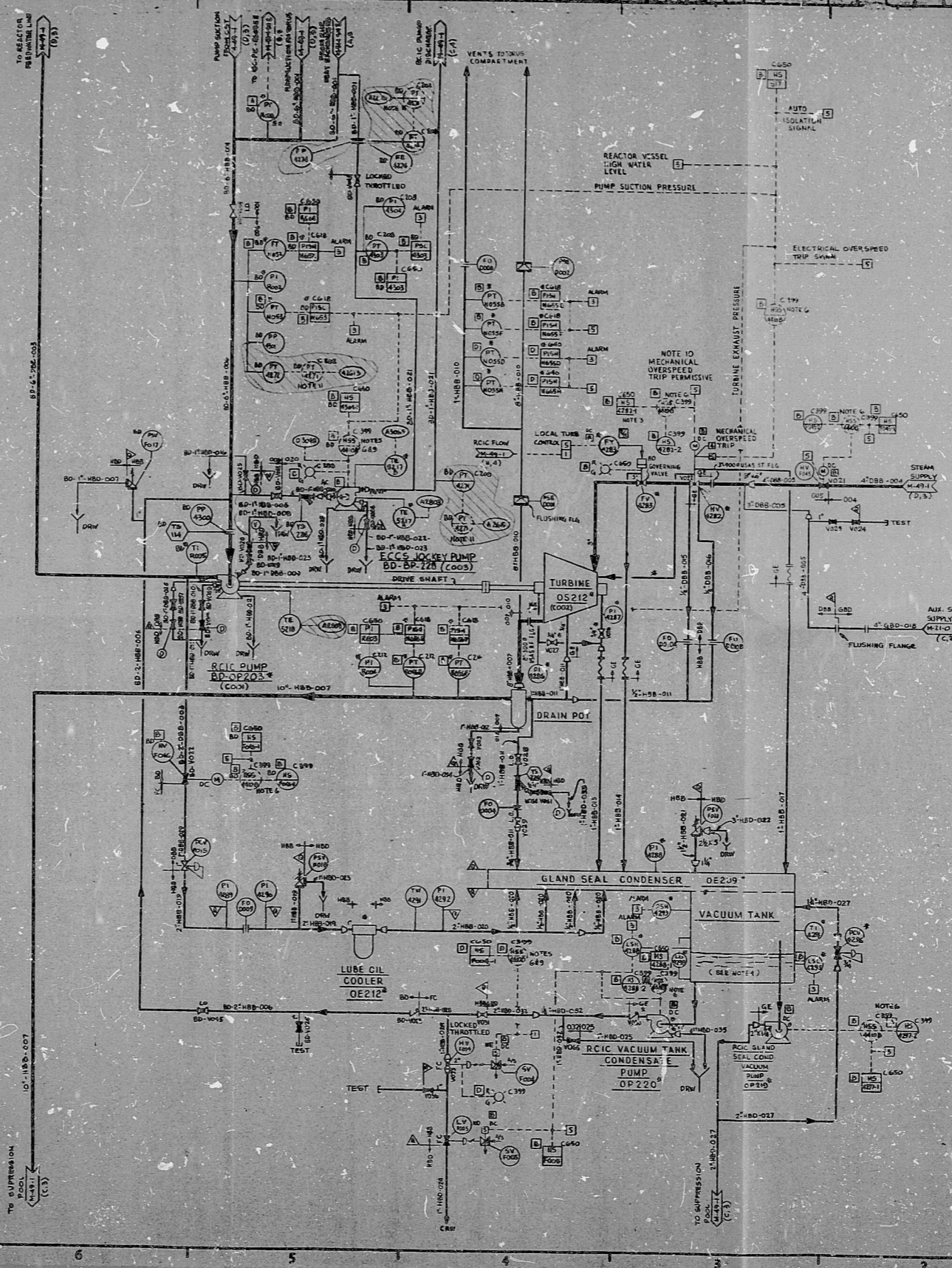
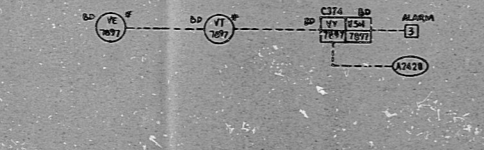
RCIC PUMP VIBRATION



RCIC PUMP TURBINE VIBRATION



JOCKEY PUMP VIBRATION



REF.	REFERENCE DRAWING	BECHTEL No.	GL No.
1	RCIC FUNCTIONAL CONTROL DIAGRAM	FC-000-001	1000002
2	RCIC TURBINE INSTRUMENTATION MANUAL	FC-000-002	1000002
3	RCIC TURBINE INSTRUMENTATION MANUAL	FC-000-003	1000002
4	RCIC TURBINE INSTRUMENTATION MANUAL	FC-000-004	1000002
5	RCIC TURBINE INSTRUMENTATION MANUAL	FC-000-005	1000002

- NOTES:
- THE LAND SEAL CONDENSER AND VACUUM TANK SHALL BE LOCATED SUCH THAT ITS WATER LEVEL IS BELOW THE BOTTOM OF THE TURBINE EXHAUST FLANGE.
  - THE GLE WPL SWITCH FOR THIS SYSTEM IS ESI.
  - THE TURBINE TRIP THROTTLE VALVE MAY BE RESET REMOTELY BY RINGING THE TRIP THROTTLE VALVE FULLY CLOSED AND THEN FULLY OPEN, THEREBY RESETTING THE TRIP LATCH. EXCEPTION AS NOTED IN NOTE 10.
  - RCIC EQUIPMENT AREA LEAK DETECTION INSTRUMENTS ARE SHOWN ON P&ID 10055-M-10.
  - THIS P&ID CONTAINS SYSTEMS IDENTIFICATION INSTRUMENTS:
    - BP - REACTOR CORE ISOLATION COOLING (RCIC) PUMP SUCTION DISCHARGE
    - FC - RCIC TURBINE STEAM SUPPLY
  - SELECTOR SWITCHES H50-4440 AND H50-44100 ARE P&ID TRANSFER SWITCHES. THESE SWITCHES ARE SHOWN MORE THAN ONCE ON THIS P&ID AND ARE ALSO SHOWN ON OTHER P&ID'S.
  - JOCKEY PUMP SEAL VENT AND DRAIN WILL BE PIPED IN FIELD TO DRIP PAN.
  - DELETED.
  - VALVE HV F004 CLOSURE AND PUMP DP-228 STARTS ON TRIP OPERATOR NOTE SWITCH PANEL. STATUS INDICATION IS PROVIDED ON ASP, BUT NO CONTROL.
  - MECHANICAL OVERSPEED TRIP SENSOR IS MECHANICALLY LINKED TO THE TRIP AND THROTTLE VALVE HV-4282. THE MECHANICAL OVERSPEED TRIP DEVICE PROVIDES AN INTERLOCK TO PREVENT VALVE HV-4282 OPENING AFTER A MECHANICAL OVERSPEED TRIP. RESET OF MECHANICAL OVERSPEED TRIP IS DONE AT THE TURBINE.
  - SIGNAL CONDITIONER PT-4271 IS BEING USED WITH PT-4271, 4274 & ET-4274 AND IS THEREFORE SHOWN MORE THAN ONCE ON THIS P&ID.

PRO APERTURE CARD

NO.	DATE	BY	DESCRIPTION
1	10/1/77	TALLEN	ISSUED FOR CONSTRUCTION
2	10/1/77	TALLEN	ISSUED FOR CONSTRUCTION
3	10/1/77	TALLEN	ISSUED FOR CONSTRUCTION
4	10/1/77	TALLEN	ISSUED FOR CONSTRUCTION
5	10/1/77	TALLEN	ISSUED FOR CONSTRUCTION
6	10/1/77	TALLEN	ISSUED FOR CONSTRUCTION
7	10/1/77	TALLEN	ISSUED FOR CONSTRUCTION
8	10/1/77	TALLEN	ISSUED FOR CONSTRUCTION
9	10/1/77	TALLEN	ISSUED FOR CONSTRUCTION
10	10/1/77	TALLEN	ISSUED FOR CONSTRUCTION

BECHTEL  
SAN FRANCISCO

POPULOUS SERVICE ELECTRIC AND GAS COMPANY  
HOPE CREEK GENERATING STATION

P&I, D.  
RCIC PUMP TURBINE

JOB NO. 10055  
DRAWING NO. M-50-17Q  
REV. 7

RIDS

8307260097

