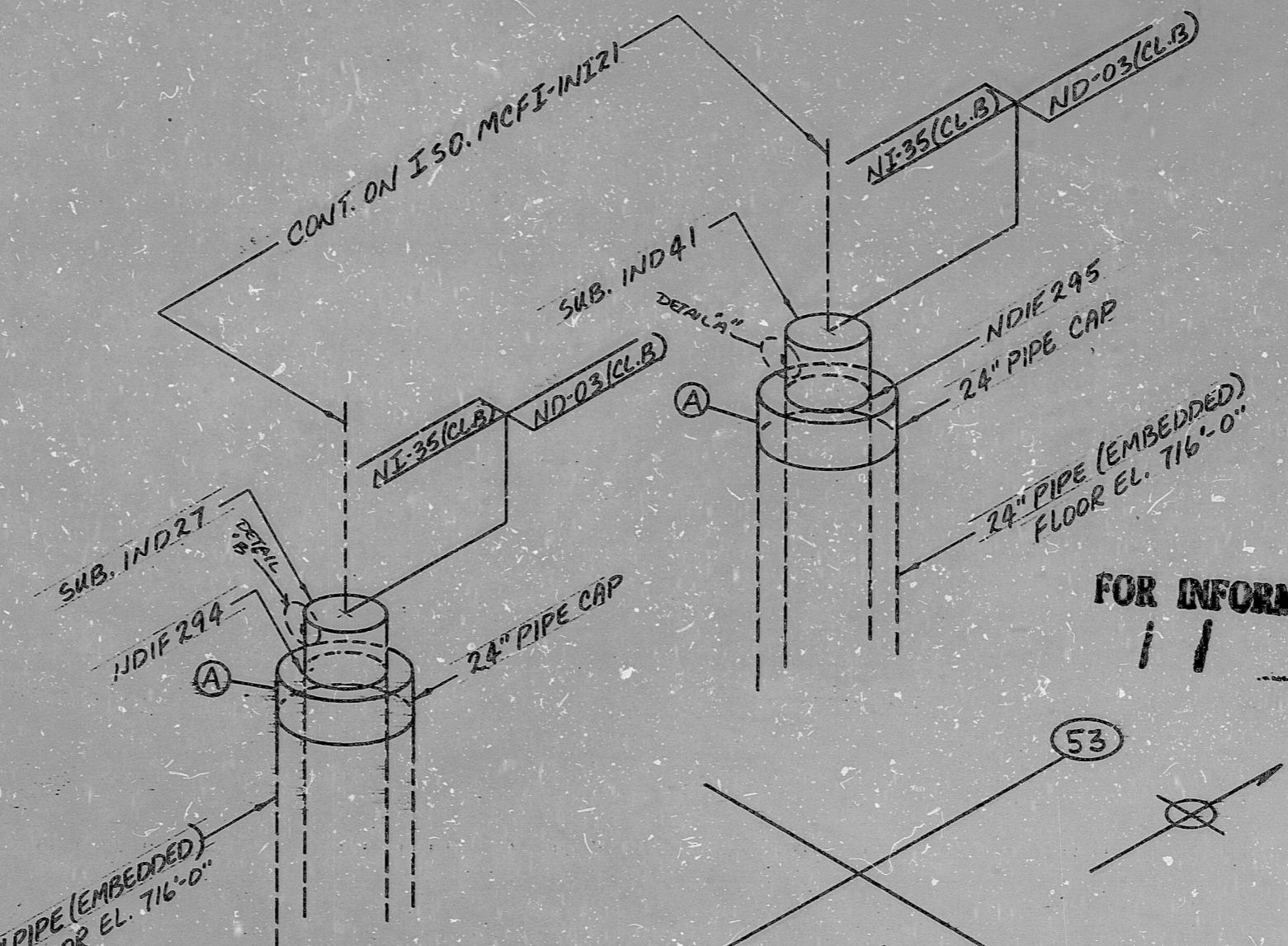
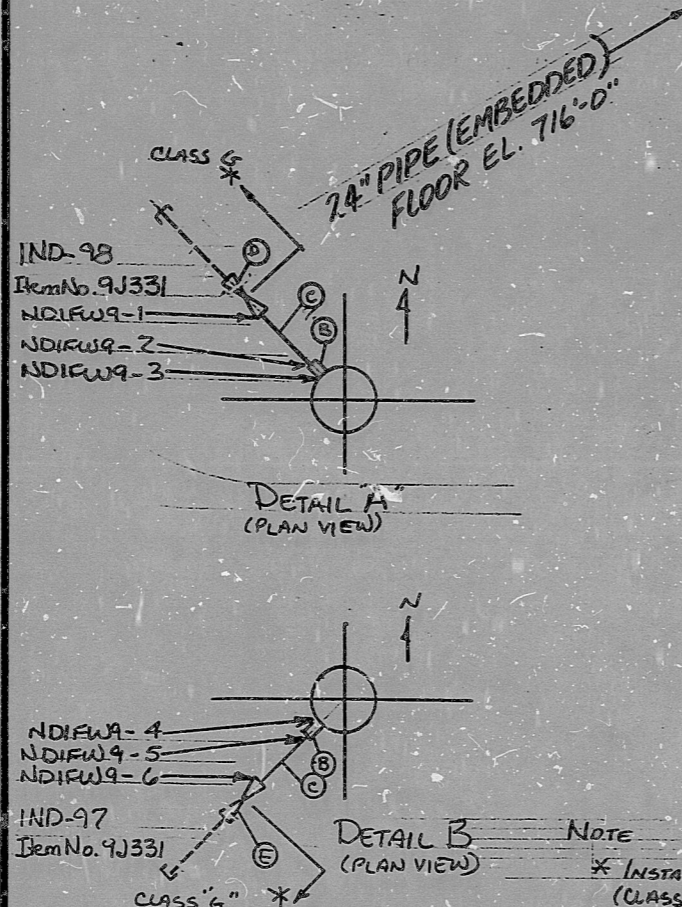


REV. 2  
 ISO. NO.: MCFI-IND 9  
 BUILDING: A&X.  
 DUKE PIPING CLASS: B  
 SYSTEM SYMBOL: ND-RESID. HEAT REM.  
 PIPING SPEC.: ND-03 P.S. 401.2  
 DRAWING NO.: MC-1414-04.41-00101  
 PROJECT: MCGUIRE

DATE	APPROVED	DATE	APP'R

NO.	REVISION
2.	ADDED DETAILS A&B, WELOS NDIFW9-1 thru 6, MAR'L S.D.E., ADDED QA 1
1.	REVISED PIPE CAP TO CS (P-1)
0.	RELEASED FOR CONSTRUCTION

QA CONDITION I



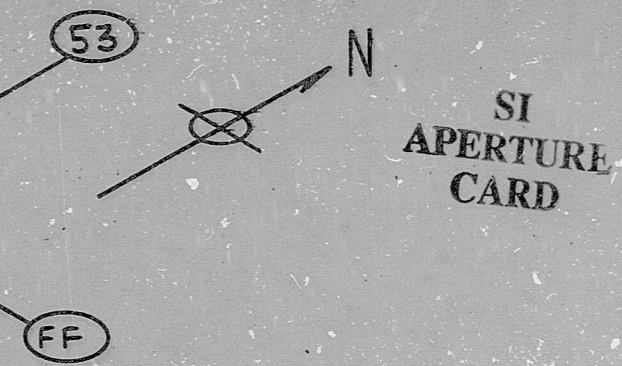
(A) 24" PIPE CAP, SA-234 WPB SCH XS

"VALVE SAFETY RELIEF"

E	1"	VALVE	IND 97	9J 331	
D	1"	VALVE	IND 98	9J 331	
C	1"	PIPE	SA312/TP304	SA376/TP304	SCH 40 SMLS/ERW
B	1"	H. COUPL	SA192/F304	SA403/WR304	SS. SCH 3000#

MATERIALS

FOR INFORMATION ONLY



13

PDR RIDS

8903230 285

