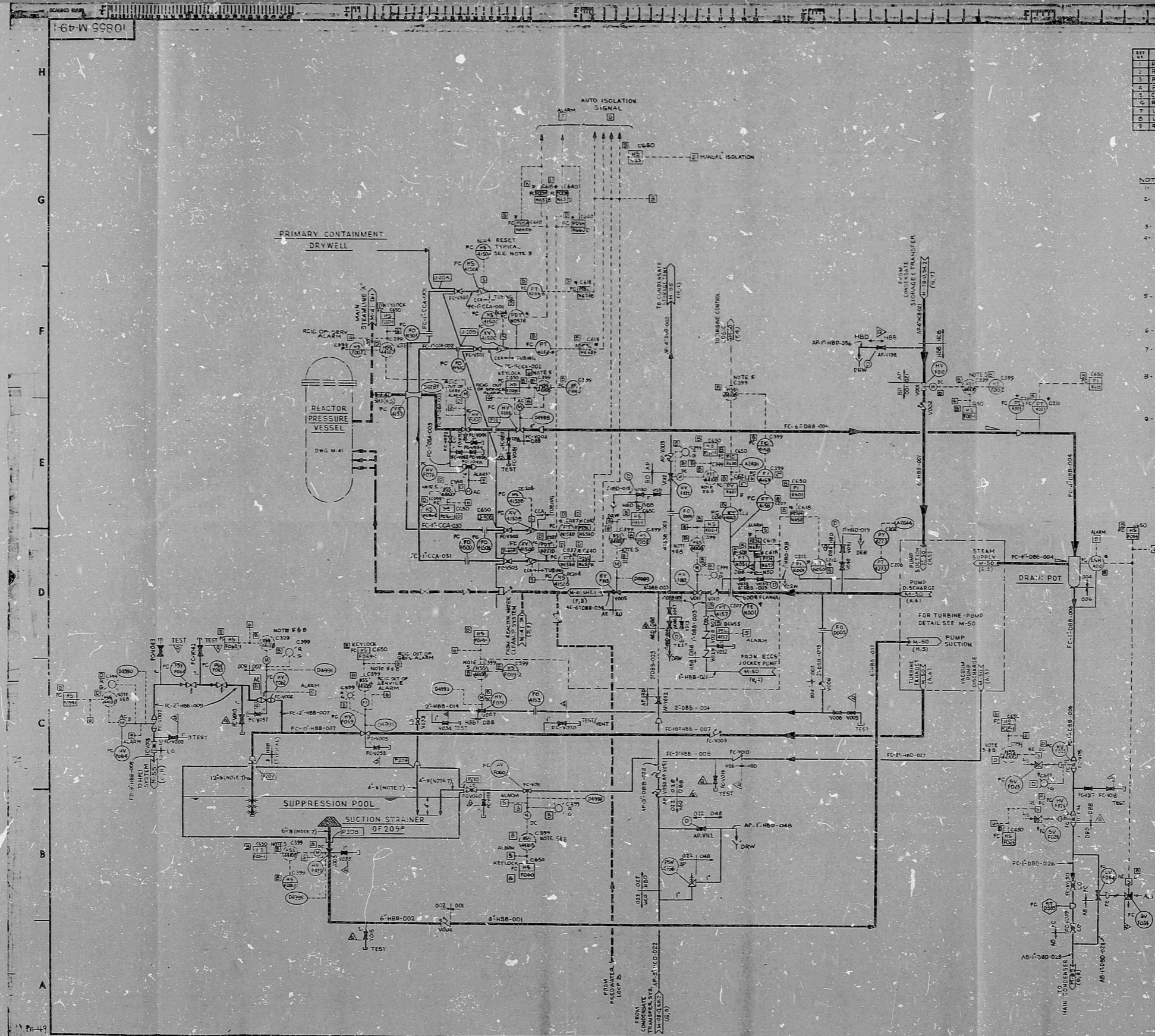


1-6b-W 99801

SYSTEM BD

REV	REFERENCE DRAWINGS	BECHTEL NO.	GE NO.
1	REACTOR CORE ISOLATION CONTROL DIAGRAM	W/ESP/200-4	7797602
2	REACTOR OVER SPEED TRIP	W/ESP/200-7	2197-00-1
3	REACTOR TURBINE CONTROL DIAG	W/ESP/200-8	2197-00-4
4	PLANT LEAK DETECTION	W-25	
5	CONTROL LOCK DIAGRAM	1-49-0	
6	REACTOR ELEMENTARY DIAGRAM	W/ESP/200-99	7797602AC
7	LOGIC DIAGRAM EXCESS FLOW CHECK	1-104-0	
8	LOGIC DIAGRAM - XHR	1-31-0	
9	REACTOR CORE ISOLATION CONTROL DIAGRAM	W/ESP/200-4	7797602

- NOTE
1. THE GE M.P. NUMBER FOR THIS SYSTEM IS E-91.
 2. TEMPERATURE LEAK DETECTION FOR THIS SYSTEM IS SHOWN ON REF. 4. THE TEMPERATURE INSTRUMENTS ARE INDEXED AS PART OF THIS P&ID (N-40).
 3. DELETED.
 4. THIS P&ID CONTAINS SYSTEMS (OR PORTIONS OF SYSTEMS):
 AB - MAIN STEAM
 AC - REHEATED
 AD - CONDENSATE STORAGE AND TRANSFER
 BD - REACTOR CORE ISOLATION COOLING
 FC - REACTOR TURBINE STEAM
 FD - HPCI TURBINE STEAM
 5. SELECTOR SWITCHES H55-440B AND H55-440D ARE RSP CHANNEL TRANSFER SWITCHES. THESE SWITCHES ARE SHOWN MORE THAN ONCE ON THIS P&ID AND ARE ALSO SHOWN ON OTHER P&IDS.
 6. A SUMMARY ALARM IS USED BY ALL OF THE EXCESS FLOW ALARMS. SEE REF. 4 AND 5.
 7. SEE CIVIL DRAWING 10958-C-0951 (C) FOR THE BREAKABLE BATH TUB MATERIAL AND CODE CLASS OF THE PIPING INSIDE SUPPRESSION POOL.
 8. VALVES HV-FO2E, FO3E, FO3D, FO3E, AND FO4E OPEN ON TRANSFER AND HV-FO2E AND FO2E CLOSE ON TRANSFER TO REMOTE SHUTDOWN PANEL. STATUS INDICATION IS PROVIDED ON RSP, BUT NO CONTROL.
 9. EXCESS FLOW CHECK VALVES STATUS LIGHTS AND RESET SWITCHES ARE LOCATED ON REMOTE CONTROL PANELS AS NOTED. ALARMS AND COMPUTER READOUTS FOR ABNORMAL CONDITIONS WILL BE MONITORED FROM THE CONTROL ROOM. SEE REF. 7.



PRO APERTURE CARD

NO.	DESCRIPTION	DATE	BY	CHKD.
1	ISSUED FOR CONSTRUCTION	10/1/77	W/ESP	W/ESP
2	REVISED PER LIST OF REVISIONS	10/1/77	W/ESP	W/ESP
3	REVISED PER LIST OF REVISIONS	10/1/77	W/ESP	W/ESP
4	REVISED PER LIST OF REVISIONS	10/1/77	W/ESP	W/ESP
5	REVISED PER LIST OF REVISIONS	10/1/77	W/ESP	W/ESP
6	REVISED PER LIST OF REVISIONS	10/1/77	W/ESP	W/ESP
7	REVISED PER LIST OF REVISIONS	10/1/77	W/ESP	W/ESP
8	REVISED PER LIST OF REVISIONS	10/1/77	W/ESP	W/ESP
9	REVISED PER LIST OF REVISIONS	10/1/77	W/ESP	W/ESP
10	REVISED PER LIST OF REVISIONS	10/1/77	W/ESP	W/ESP

BECHTEL
 SAN FRANCISCO
 PUBLIC SERVICE ELECTRIC AND GAS COMPANY
 HOPE CREEK GENERATING STATION

P&I.D.
 REACTOR CORE ISOLATION-COOLING

JOB NO.	DRAWING NO.	REV.
10955	M-49-1	7 Q

RIDS

8307260095

