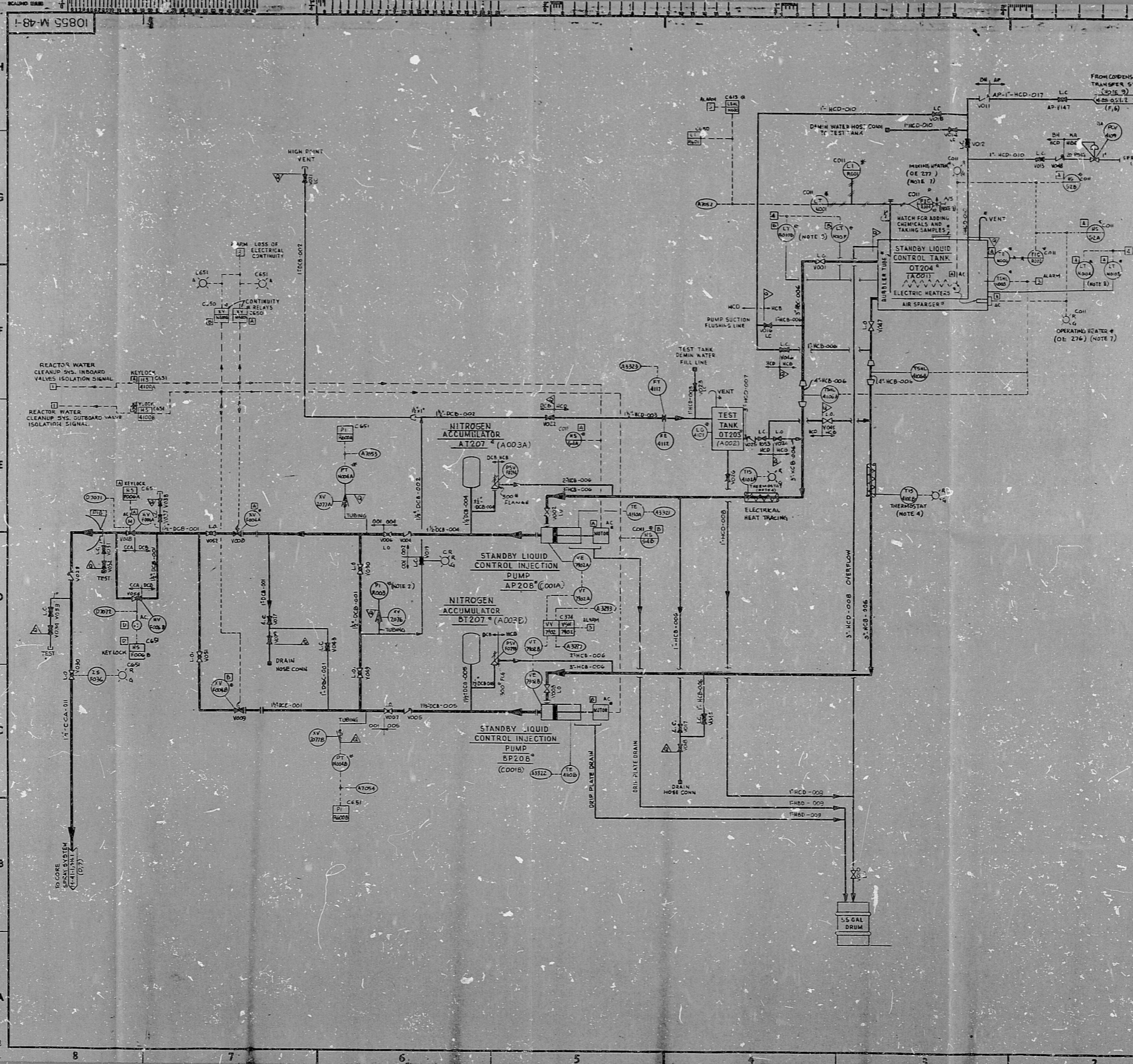


22" 17" 11" 8.5" 8.5" 11" 17" 22"



SYSTEM-BH			
NO.	REFERENCE DRAWING	REVISION	DATE
1	SLCS STANDBY LIQUID CONTROL SYSTEM		
2	STANDBY LIQUID CONTROL SYSTEM - P&ID		
3	SLCS STANDBY LIQUID CONTROL SYSTEM - P&ID		
4	SLCS ELEM. DIAG. REL'S		

- NOTES:**
- THIS IS A CATEGORY I SAFETY SYSTEM (EXCEPT AS NOTED) AND PLATE DRAWING, DEMONSTRATES AND INSTRUMENT ALLEGES, ALL TANK OVERFLOW LINE AND TEST TANK DRAIN LINE ARE NOT SPECIFIED.
 - OPERATOR INDICATOR ROOM AND TEST TANK CAN BE READ FROM VALVE POSITION LOCATION, LINE 8-T.
 - THE O&M NUMBER FOR THIS SYSTEM IS C4.
 - STANDBY LIQUID CONTROL SYSTEM SHALL HAVE THERMALLY CONTROLLED HEAT TRACING ON THE PUMP SUCTION LINE FROM TANK (OT204) AND INCLUDING PUMP HEADS AND UP TO VALVED AIR/VOIA, VOAS, VOAS, VOIT & VO24.
 - GE NO. NUMBERS ARE SHOWN IN BUBBLES NEXT TO BUBBLED EQUIPMENT NUMBERS WHEREVER APPLICABLE.
 - VALVE VO30 IS GE VALVE FC36.
 - HEATERS OEA1 AND OEA2 SHALL BE CONNECTABLE TO STANDBY O/C POWER.
 - LEVEL TRANSMITTERS SHOULD BE WALL (OR RACK) MOUNTED BELOW TANK NOZZLE ELEVATION AND VENTED TO ATMOSPHERE. INSTRUMENT LINES BETWEEN THE LEVEL TRANSMITTERS AND THE STORAGE TANK SHALL BE AS SHORT AS POSSIBLE TO PREVENT CLOGGING DUE TO PRECIPITATION OF PENTABARATE SOLUTION IN THE INSTRUMENT LINES.
 - THE ELEVATION OF THE DEMINERALIZED WATER AND COMPRESSED AIR SUPPLY LINES SHALL BE ABOVE THE TOP OF THE STORAGE TANK.
 - THIS P&ID CONTAINS PORTIONS OF SYSTEMS AP AND KA.

PRO APERTURE CARD

REVISION PER REVISION LIST	DATE	BY	CHKD BY
REVISED AND REISSUED			
ISSUED FOR CONSTRUCTION			

BECHTEL
SAN FRANCISCO

PUBLIC SERVICE ELECTRIC AND GAS COMPANY
HOPE CREEK GENERATING STATION

P. & I. D.
STANDBY LIQUID CONTROL

JOB NO. 10855
DRAWING NO. M-48-1
PAGE 2

22" 17" 11" 8.5" 8.5" 11" 17" 22"

RIDS

8307260093

