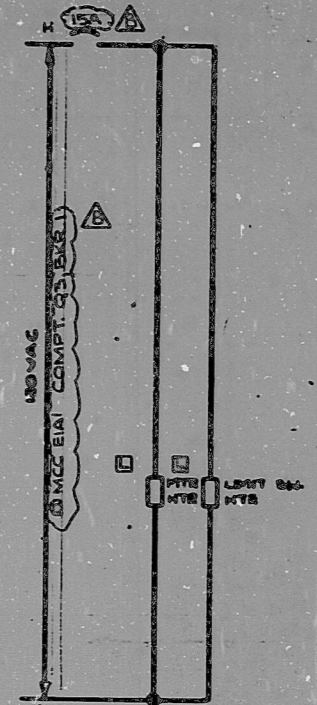


INFORMATION  
THIS DOCUMENT IS  
SUBJECT TO REVISION  
WITHOUT NOTIFICATION  
TO THE USER OF THIS  
COPY



TO ANW CPOOL  
33/RHR  
TRAIN A VLV  
OVERLOAD  
1-8  
49X

CS-MB (1S15)

BLOCK	CONTACT	POSITION			USE
		CLOSE	AUTO	OPEN	
A	NC(1)		X	X	SP
	NO(2)	X			CONT
B	NC(3)	X	X		CONT
	NO(4)			X	CONT

SPRING RETURN TO AUTO  
X-DENOTES CONTACT CLOSED  
G.E. CAT # CR2940US201E



CONTACT	VALVE POSITION		USE
	CLOSE	OPEN	
1			THIS DWG
2			SPARE
3			THIS DWG
4			THIS DWG
5			THIS DWG
6			SPARE
7			SPARE
8			THIS DWG
9			SPARE
10			SPARE
11			SPARE
12			SPARE
13			SPARE
14			SPARE
15			SPARE
16			SPARE
17			OPENS ON MECH. OVERLOAD ON CLOSING THIS DWG
18			OPENS ON MECH. OVERLOAD ON OPENING THIS DWG

- REFERENCE DRAWINGS
- 0-E-0105 - ELECT. WIRING STANDARDS (SYMBOLS)
  - 1-E-2677 342 - RHR INLET ISOLATION VALVES LOGIC DIAGRAM
  - 1-E-6716 - CONTROL WIRING DIAGRAM RHR INLET ISOLATION VALVE XRR060A
  - 21C333 - HOT LEG TO RHR PUMP A
  - 5HT.508

LEGEND  
IRROO2 - SOLID STATE PROT. SYS. TRAIN A ACTUATION CABINET

NOTES  
IRRO2 OPENS ON HIGH-1 RCS. PRESS.  
ZK956 CLOSSES ON HIGH-2 RCS. PRESS.

180V MCE EIAL COMPT. (G1)  
MECH EQUIP NO. 1R181XR060A

TERA  
APERTURE  
CARD

ISSUED FOR USE	DATE	BY	CHK	APP	DATE	DESCRIPTION	BY	CHK	APP	DATE
ISSUED FOR USE	08/AM/88									
REVISION										

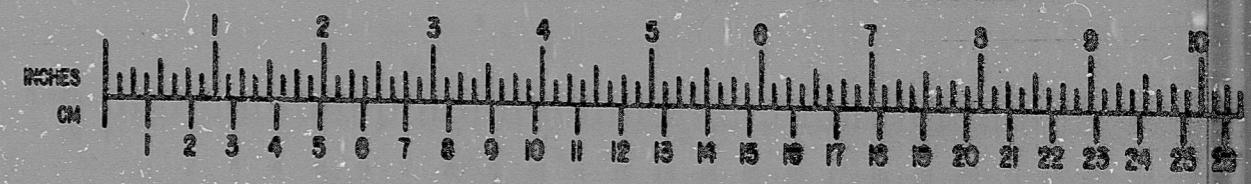
**Brown & Root Inc.**  
ENGINEERS CONSTRUCTORS  
HOUSTON, TEXAS

**SOUTH TEXAS  
PROJECT**

PKG: 008B	SUFF: 101	ACT: 581
DRAWING TITLE ELECTRICAL	CONTRACT NO. SCALE CR-0241 NONE	
ELEMENTARY DIAGRAM	DRAWING NO. 4R-16	
RHR INLET ISOLATION VALVE XRR 060A	1-E-4716-B	

**BROWN & ROOT INC.**  
MICROFILM SERVICES

MONDAY, AUG. 20 1979



MICROFILMED MAR 18 1978

RIDS

8112170337

