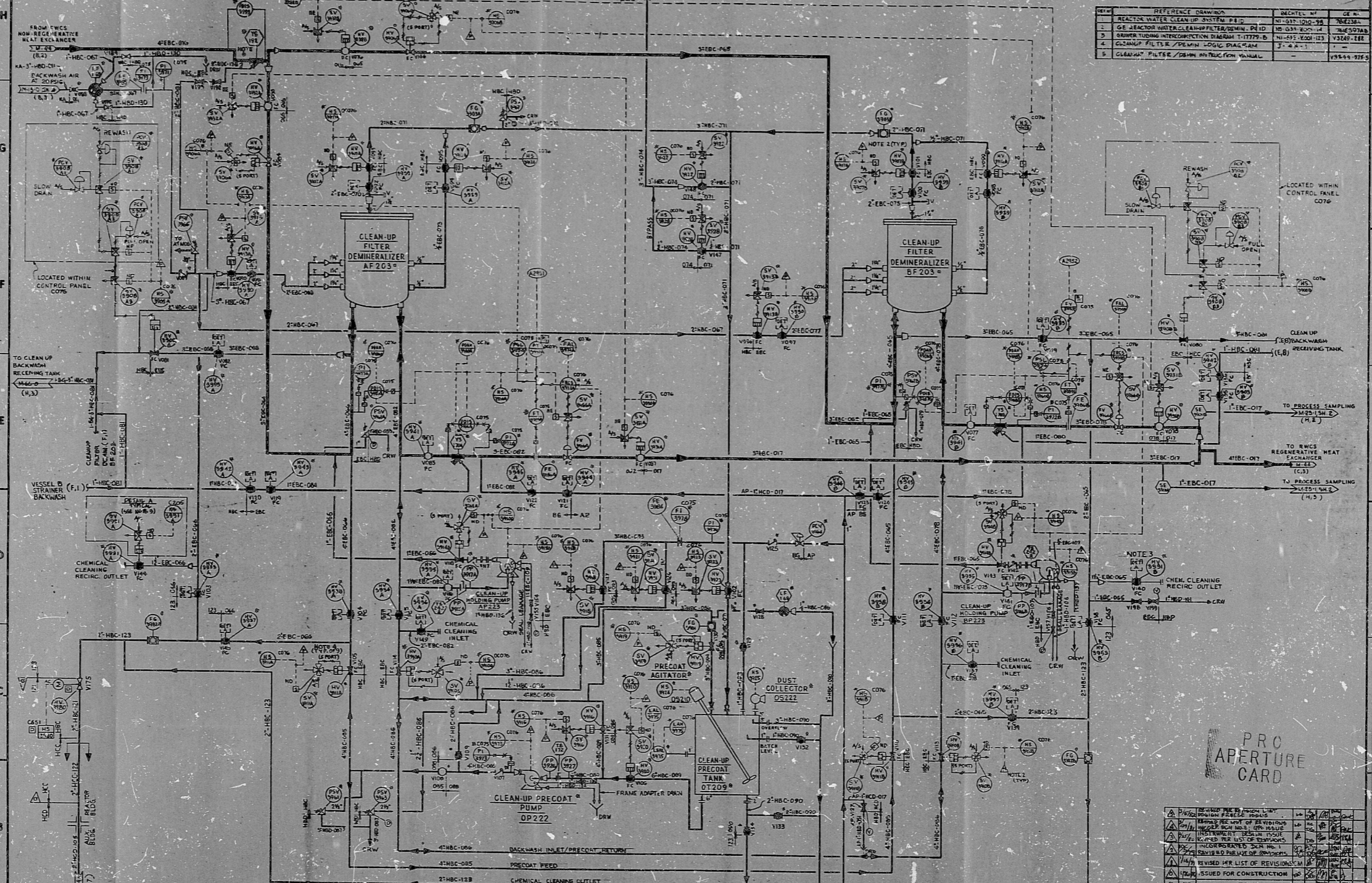


10855 M-45-1

SYSTEM BG

NO.	REFERENCE DRAWING	DATE	BY	CHKD.
1	REACTOR WATER CLEAN-UP SYSTEM P.I.D.	11-27-54	W. J. ...	...
2	GE REACTOR WATER CLEAN-UP FILTER/DEM. P.I.D.	11-27-54	...	...
3	ORNER TUBING INTERSECTION DIAGRAM T-17779-B	11-27-54	...	...
4	CLEAN-UP FILTER/DEM. P.I.D.	11-27-54	...	...
5	CLEAN-UP FILTER/DEM. P.I.D.	11-27-54	...	...



**NOTES:**

1. THE MODEL NUMBER FOR THIS SYSTEM IS GED-2001.

2. SYMBOLS FOR INSTRUMENTS AUTOMATICALLY REQUESTED BY THE SYSTEM ARE SHOWN IN THE REVERSE CONTROL WITH REMOTE MANUAL OVERRIDE. SEE REVERSE CONTROL FOR VALVE POSITIONS.

3. THE VALVE POSITIONS ARE SUPPLIED BY THE OPERATOR. ALL OPERATORS ARE SUPPLIED BY THE OPERATOR. ALL OPERATORS ARE SUPPLIED BY THE OPERATOR.

4. ALL OPERATORS ARE SUPPLIED BY THE OPERATOR. ALL OPERATORS ARE SUPPLIED BY THE OPERATOR.

5. ALL OPERATORS ARE SUPPLIED BY THE OPERATOR. ALL OPERATORS ARE SUPPLIED BY THE OPERATOR.

6. (ONE DRAWING FOR EACH) SEE REVERSE FOR DETAILS.

7. CONVERSION OF A SCALE INCHES IN PANEL COTS TO 1/8" = 1'-0" IS INDICATED BY THE SYMBOLS.

8. MOUNTING IS WITH THE FLOW ARROW CAST INTO THE STRAINER BODY POINTING IN THE REVERSE DIRECTION OF NORMAL FLOW.

9. THIS P&ID CONTAINS THE FOLLOWING SYSTEMS OR PORTIONS OF SYSTEMS:

AP - CONDENSATE STORAGE AND TRANSFER

BA - REACTOR WATER CLEAN-UP

CA - SERVICE COMPRESSED AIR

DA - CONDENSATE STORAGE ROOM WILL BE RETAINED FROM PANEL COT 7076

PRO APERTURE CARD

NO.	REVISION	DATE	BY	CHKD.
1	ISSUED FOR CONSTRUCTION	11-27-54	...	...
2	REVISED PER LIST OF REVISIONS	11-27-54	...	...
3	REVISED PER LIST OF REVISIONS	11-27-54	...	...
4	REVISED PER LIST OF REVISIONS	11-27-54	...	...
5	REVISED PER LIST OF REVISIONS	11-27-54	...	...

BECHTEL  
SAN FRANCISCO  
PUBLIC SERVICE ELECTRIC AND GAS COMPANY  
HOPE PRKER GENERATING STATION

F. & I. D.  
CLEAN-UP FILTER/DEMINERALIZER

10855 M-45-1 5 Q

RIDS

8307269088

