

INFORMATION
THIS DOCUMENT IS
SUBJECT TO REVISION
WITHOUT NOTIFICATION
TO THE USER OF THIS
COPY

TO AVOID CPOO1
STARTER
TRAIN A VLV
OVERLOAD
1-8

BLOCK	CONTACT	POSITION		USE
		CLOSE	NORM. OPEN	
A	NC(1)	X		CONT
	NO(2)		X	CONT
D	NC(3)	X		SP
	NO(4)		X	SP

SPRING RETURN TO NORMAL
X-DENOTES CONTACT CLOSED
G.E. LAY 4R2940US203A



CONTACT	VALVE POSITION		USE
	0%	100%	
1	CLOSE	OPEN	THIS DWG
2			SP
3			THIS DWG
4			THIS DWG
5			THIS DWG
6			SP
7			THIS DWG
8			SP
9			SP
10			SP
11			SP
12			SP
13			SP
14			SP
15			SP
16			SP
17	OPENS ON MECH. OVERLOAD ON CLOSING		THIS DWG
18	OPENS ON MECH. OVERLOAD ON OPENING		THIS DWG

- REFERENCE DRAWINGS
- 0-E-0105 - ELECT. WIRING STANDARDS (SYMBOLS)
 - 1-E-3477 SH1 - RHR MOTOR OPERATED VALVES LOGIC DIAGRAM
 - 1-E-6724 - CONTROL WIRING DIAGRAM RHR PUMP 1A MINIFLOW VALVE XRHO67A
 - 271C333-SH.325 - RHR PUMP 1A MINIFLOW

TERA
APERTURE
CARD

LEGEND

480V MCC EIAL COMPT. 2R161XRHO67A

NUCLEAR SAFETY RELATED
CLASS 1E

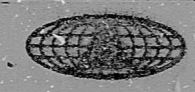
PKG: 008B	SUFF: 101	ACT: 581
DRAWING TITLE ELECTRICAL ELEMENTARY DIAGRAM RHR PUMP 1A MINIFLOW VALVE XRHO67A		CONTRACT NO. SCALE CR-0241 NONE DRAWING NO 4-R-16 1-E-4724-B

NO.	ISSUED FOR USE	DATE	BY	DESCRIPTION	BY	DATE	DESCRIPTION
1	ISSUED FOR USE	08/20/75	CS				

Brown & Root Inc.
ENGINEERS CONSTRUCTORS
HOUSTON, TEXAS

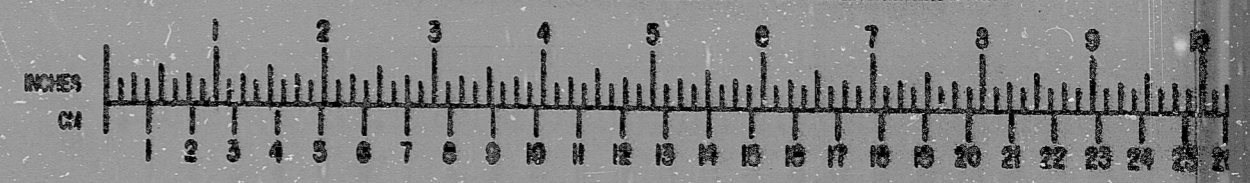
**SOUTH TEXAS
PROJECT**

INFORMATION □ DESIGN □ REVIEW □ USE □ CONSTRUCTION



BROWN & ROOT INC.
MICROFILM SERVICES

MONDAY, AUG. 20 1975



MICROFILMED MAR 1 8 1978

RIDS

8112170326

