

INSERVICE INSPECTION

ISO. NO: NCFI-INC-4B

DUKE PIPING CLASS: ASME SECT. III CL. A+B

SYSTEM SYMBOL: REACTOR COOLANT

PIPING SPEC.: NC-D6 PS250.1 NC-10 PS250.2

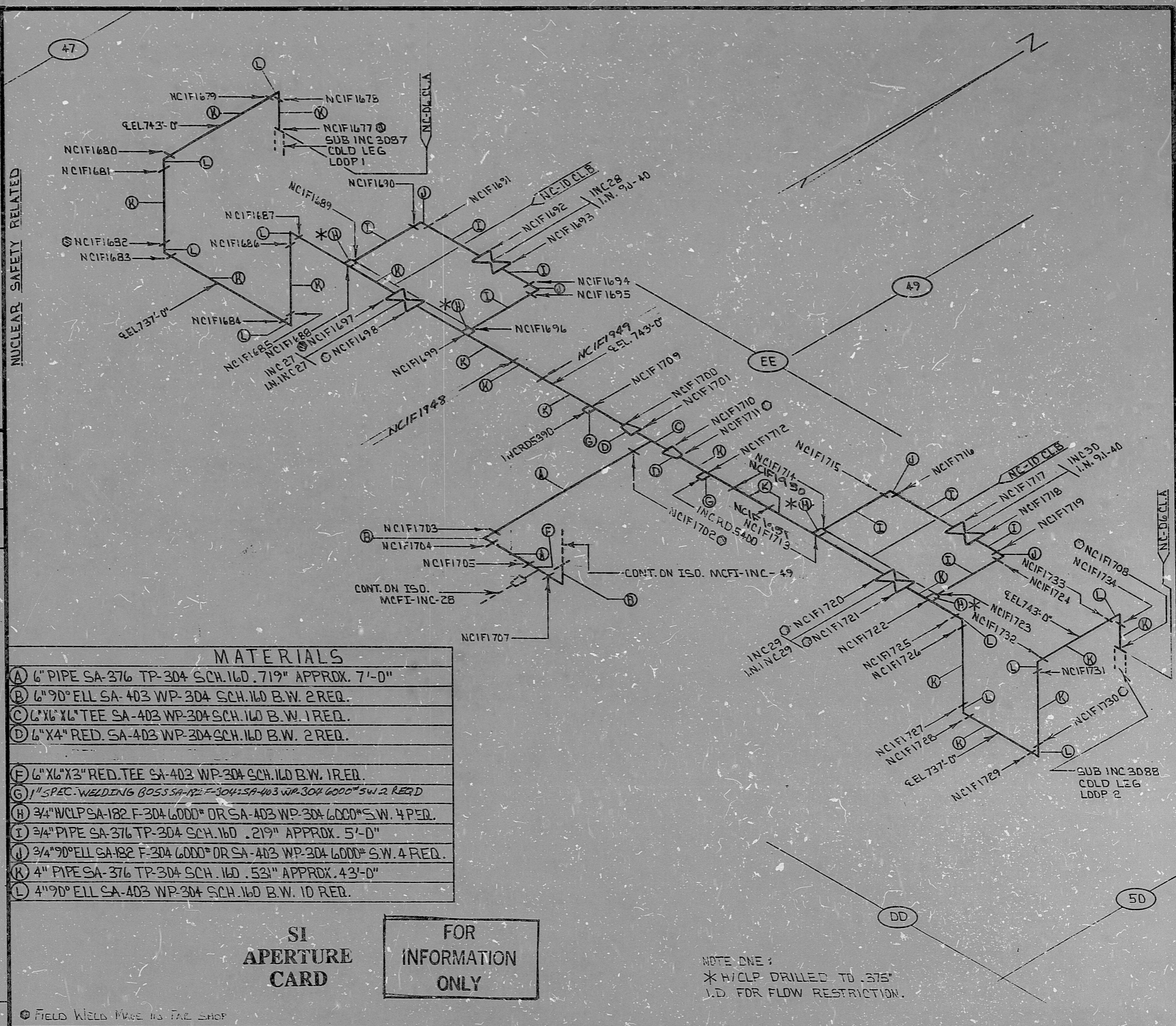
DRAWING NO.: MC-1414-03.20-DD, DI, 04; 1676-4

PROJECT: MCGUIRE

NUCLEAR SAFETY RELATED

REA	DATE	BY	CHKD.	DATE
52-28	5-3-78	DA5		
11177	11-17-77	DA5		
129-27	3-27-77	DA5		
129-27	3-27-77	DA5		
129-27	3-27-77	DA5		
129-27	3-27-77	DA5		
129-27	3-27-77	DA5		
129-27	3-27-77	DA5		
129-27	3-27-77	DA5		
129-27	3-27-77	DA5		

NO	REVISION	DATE
1	REL. FOR CONST.	
2	CHANGE MAT G TO A 1" SPEC. WELDING BOSS WELD NCIF 1706 AND PICE (E) CHANGED MAT. RECD. IN MAR 1951	
3	REV. TO ADD WELDS NCIF 1948 THRU NCIF 1951	
4	ADDED SYMBOL TO FIELD WELDS MADE IN FAB SHOP	



MATERIALS	
(A)	6" PIPE SA-376 TP-304 SCH. 160 .719" APPROX. 7'-0"
(B)	6" 90° ELL SA-403 WP-304 SCH. 160 B.W. 2 REQ.
(C)	6" X 6" X 6" TEE SA-403 WP-304 SCH. 160 B.W. 1 REQ.
(D)	6" X 4" RED. SA-403 WP-304 SCH. 160 B.W. 2 REQ.
(E)	6" X 6" X 3" RED. TEE SA-403 WP-304 SCH. 160 B.W. 1 REQ.
(F)	1" SPEC. WELDING BOSS SA-182 F-304 TP-304 SCH. 160 B.W. 2 REQ.
(G)	3/4" WCLP SA-182 F-304 6000* OR SA-403 WP-304 6000* S.W. 4 PED.
(H)	3/4" PIPE SA-376 TP-304 SCH. 160 .219" APPROX. 5'-0"
(I)	3/4" 90° ELL SA-182 F-304 6000* OR SA-403 WP-304 6000* S.W. 4 REQ.
(J)	4" PIPE SA-376 TP-304 SCH. 160 .531" APPROX. 4.3'-0"
(K)	4" 90° ELL SA-403 WP-304 SCH. 160 B.W. 10 REQ.

SI APERTURE CARD FOR INFORMATION ONLY

NOTE ONE:
* H/CLP DRILLED TO .375" I.D. FOR FLOW RESTRICTION.

06

PDR RIDS

8903230195

