

INFORMATION
THIS DOCUMENT IS
SUBJECT TO REVISION
WITHOUT NOTIFICATION
TO THE USER OF THIS
COPY

- ANN CPOO1(A)
- WIND (E-11)
- CTMT SPRAY
- TRAINZA VALVE
- OVERLOAD
- (I-E-8701-6)

BLOCK	CONTACT	POSITION (1921)			USE
		CLOSE	AUTO	OPEN	
A	NC(1)		X	X	SP
	NO(2)	X			CONT
B	NC(3)	X	X		SP
	NO(4)			X	CONT

SPRING RETURN TO AUTO
X-DENOTES CONTACT CLOSED
G.E. CAT. # CR2940UB203E

CTMT SPRAY PMP IA
DISCH ISOL
XCS-001A

CONTACT	VALVE POSITION		USE
	CLOSE	OPEN	
1			THIS DWG
2			SPARE
3			THIS DWG
4			THIS DWG
5			THIS DWG
6			SPARE
7			THIS DWG
8			SPARE
9			SPARE
10			SPARE
11			THIS DWG
12			SPARE
13			SPARE
14			SPARE
15			SPARE
16			SPARE
17	OPENS ON MECH. OVERLOAD ON CLOSING		THIS DWG
18	OPENS ON MECH. OVERLOAD ON OPENING		THIS DWG

REFERENCE DRAWINGS

- 0-E-0105 - ELECT. WIRING STANDARDS & SYMBOLS
- 1-E-3001-SH.1 - CONTAINMENT SPRAY MOV LOGIC DIAGRAM
- 1-E-6830 - CONTROL WIRING DIAGRAM CONTAINMENT SPRAY PUMP DISCH. ISOL. VALVE XCS001A
- (W) 21C333-5H.548-MOTOR OPERATED VALVE I-3100A
- 1-E-1227 - ONE LINE DIAGRAM, 480V MCC, BIAZ

NOTES

1 CONTACTS CHANGE STATE ON CONTAINMENT SPRAY ACTUATION

LEGEND

- 27 - CONTROL POWER NOT AVAILABLE
- IRRO32 - ESF MONITORING TRAIN 'A' CABINET
- IRRO02 - SOLID STATE PROTECTION ACTUATION CABINET TRAIN 'A'
- ☒ - 480V MCC-BIAZ COMPT. NT MECH. EQUIP. NR21U10XCS001A

TERA APERTURE CARD

NUCLEAR SAFETY RELATED
CLASS I E

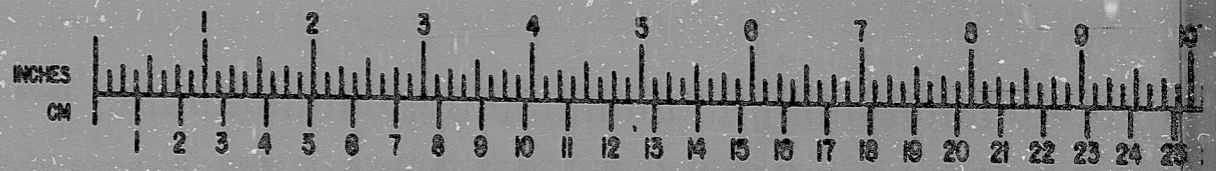
PKG: 017 SUFF: 100 ACT: 581

DRAWING TITLE ELECTRICAL	CONTRACT NO. SCALE CR-0241 NONE
ELEMENTARY DIAGRAM	DRAWING NO 4-N-10
CONTAINMENT SPRAY PUMP DISCH ISOL VALVE XCS001A	1-E-4830-C

INFORMATION PRELIMINARY REVIEW USE CONSTRUCTION

DATE	DESCRIPTION	BY	CHK	PROJ	PROJ	ENG	MGR	DATE	DESCRIPTION	BY	CHK	PROJ	PROJ	ENG	MGR

BROWN & ROOT INC.
MICROFILM SERVICES



WEDNESDAY, MAR. 9 1980

MICROFILMED

RIDS

8112170314

