

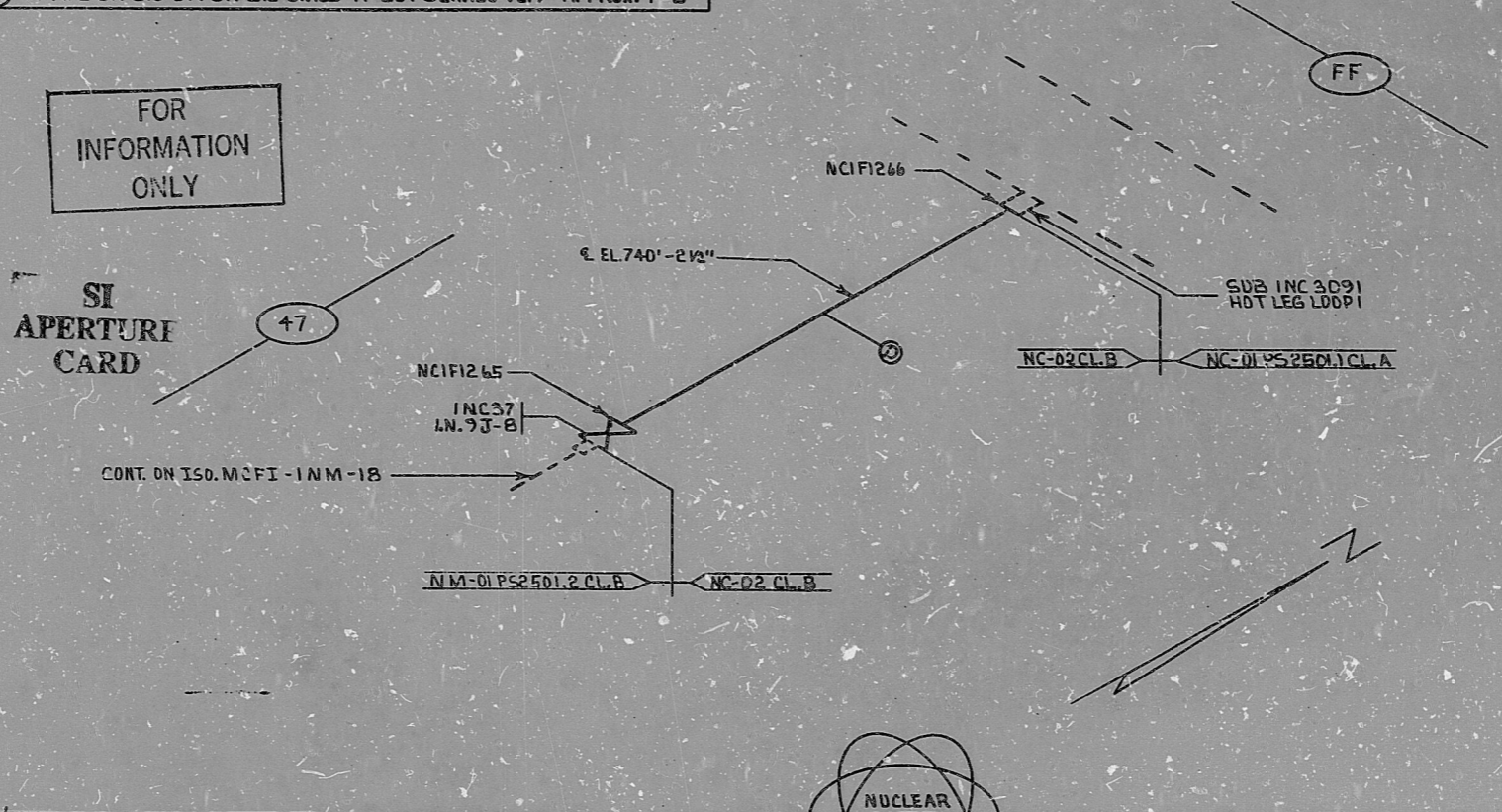
4	REVISED TO CHANGE MATL. (D) TO (E) IN LOWER SECTION	KK	1/18	1987	ISQ NO: MCFI-INC-28	REV. 4
3	REVISED ISO CONTINUATION	REA	1/27	1987	DUKE PIPING CLASS: ASME SECT. III CL. A & B	BUILDING: REACTOR
2	ADD MAT "D" TO ADDITIONAL SECTION WHICH CONT. TO NEXT INC. 28. REVISED TO CORRECT DUPLICATION OF MATERIAL I.D. IN BILL OF MATERIAL	REA	2/27	1987	SYSTEM SYMBOL: REACTOR COOLANT	
1	REL. FOR CONST.	DL	1/27	1987	PIPING SPEC.: NC-02 PS2501.2 NC-06 PS2501.1	
0		DL	1/27	1987	DRAWING NO.: MC-144-03.2D-00,02	
NO.	REVISION	ORIG.	CHKD.	APPR.	PROJECT <u>McGUIRE</u>	
		DATE	DATE	DATE		

MATERIALS

(D) 3/4" PIPE SA-376 DR SA-312 SMLS TP-304 SCH.160 .219" APPROX. 1'-0"

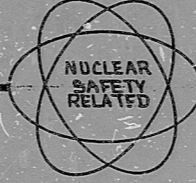
FOR INFORMATION ONLY

SI APERTURE CARD

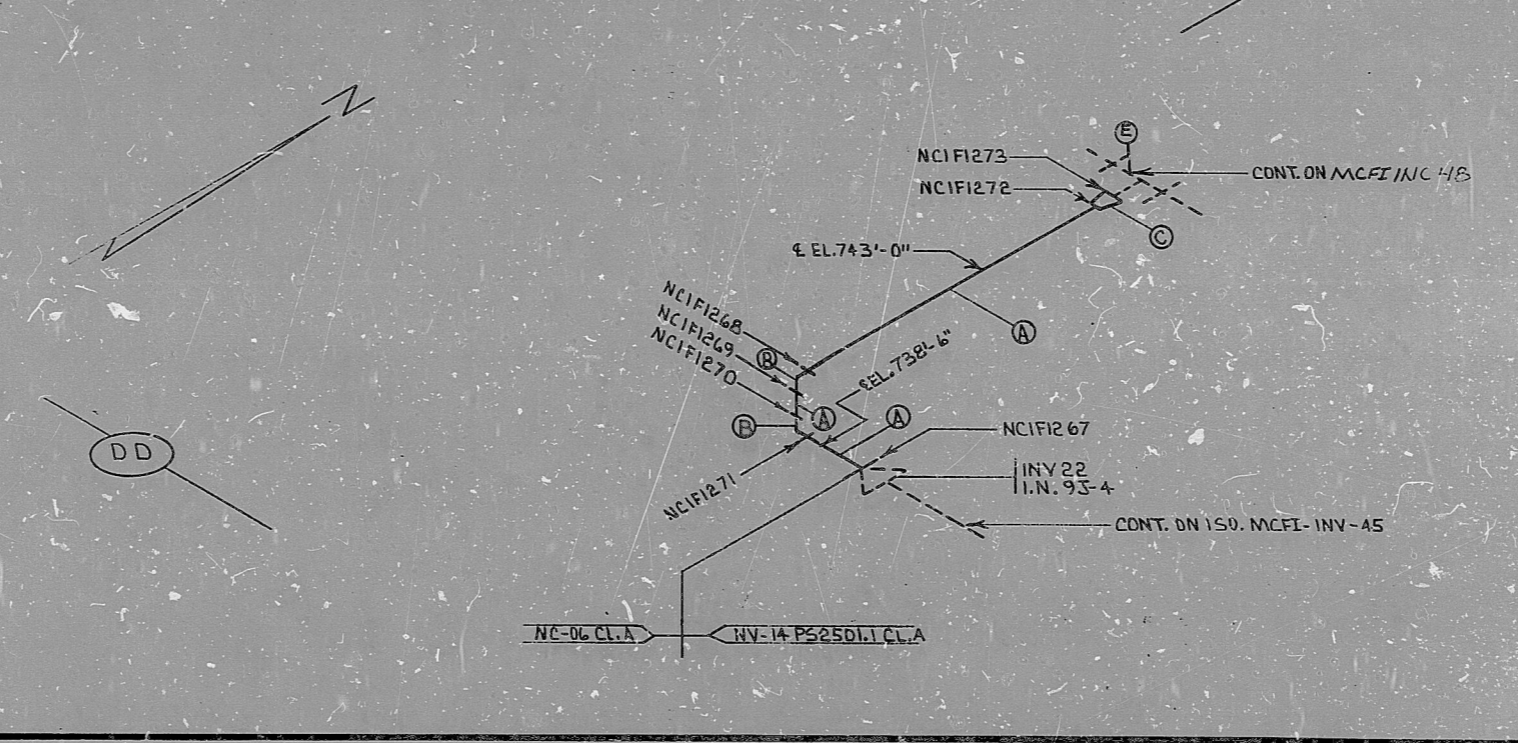


MATERIALS

- (A) 2" PIPE SMLS SA-376 DR SA-312 TP-304 SCH.160 .344" APPROX. 8'-0"
- (B) 2" 90° ELL SA-102 F-304 DR SA-403 WP-304 6000° S.W. 2 REQ.
- (C) 3" X 2" RED SMLS SA-403 WP-304 SCH.160 B.W. 1 REQ.
- (E) 6" X 6" X 3" RED TEE SA-403 WP-304 SCH.160 B.W. 1 REQ.



49



8903220532

PDR RIDS

