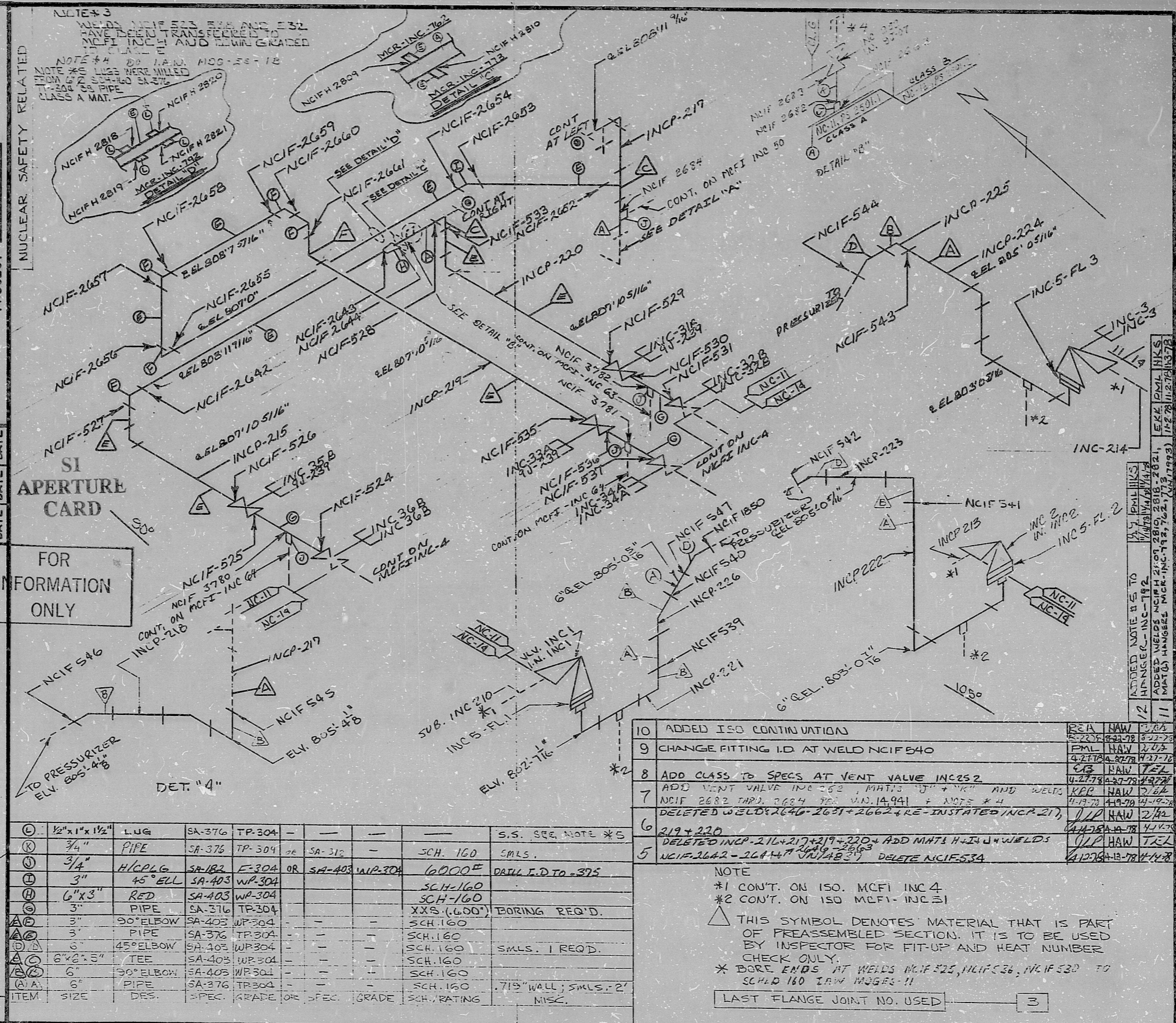


REV.	17
ISO. NO.	MCFI INC 5
BUILDING:	REACTOR ZONE RB
DUKE PIPING CLASS:	ASME SECTION III CLASS B
SYSTEM SYMBOL:	REACTOR COOLANT - NC
PIPING SPEC.:	NC II PS. 2501.1 NC 12.7
DRAWING NO.:	NC.1414.03-20-00.04
PROJECT:	MC GUIRE
NUCLEAR SAFETY RELATED	
NO.	REVISION
4	ADDED NCIF-53
3	YN12655: DELETED PRE-ASSY SECTIONS INCP227, 228, 229, & CHANGE THEM TO MATERIAL "C" AT TRANSFER POINT. REVISED "D" TO "B" AT INCP218
2	DIRECTION OF SLOPE CHANGED
1	REL. for Construction VAN# 11427 - SLOPE LINE
0	



FOR INFORMATION ONLY

ITEM	SIZE	DES.	SPEC.	GRADE	OR SPEC.	GRADE	SCH.	RATING
(C)	1/2"x1 1/2"	LUG	SA-376	TP-304	-	-	-	S.S. SEE NOTE *5
(K)	3/4"	PIPE	SA-376	TP-304	SA-312	-	SCH. 160	SMLS.
(P)	3/4"	HIC PLG	SA-182	E-304	OR SA-403	WR-304	6000E	DRILL I.D. TO .375
(H)	3"	45° ELL	SA-403	WR-304	-	-	SCH-160	
(R)	6"x3"	RED	SA-403	WR-304	-	-	SCH-160	
(G)	3"	PIPE	SA-376	TP-304	-	-	XXS (.600")	DRILLING REQ'D.
(A)	3"	90° ELBOW	SA-403	WR-304	-	-	SCH. 160	
(D)	3"	PIPE	SA-376	TP-304	-	-	SCH. 160	
(B)	6"	45° ELBOW	SA-403	WR-304	-	-	SCH. 160	SMLS. 1 REQ'D.
(C)	6"x2 1/2"	TEE	SA-403	WR-304	-	-	SCH. 160	
(A)	6"	90° ELBOW	SA-403	WR-304	-	-	SCH. 160	
(A)	6"	PIPE	SA-376	TP-304	-	-	SCH. 160	.715" WALL; SMLS.-2' MISC.

- 10 ADDED ISO CONTINUATION
  - 9 CHANGE FITTING I.D. AT WELD NCIF540
  - 8 ADD CLASS TO SPECS AT VENT VALVE INCP222
  - 7 ADD VENT VALVE INC 532, MAT'S "J" & "K" AND WELDS NCIF 2682 TARD, 2684 TARD, VAN. 14941 & NOTE \*4
  - 6 DELETED WELDS 2646-2631+2662+RE-INSTATED INCP 217, 219+220
  - 5 DELETED INCP-216+217+219+220+ ADD MATS H+I+J+WELDS NCIF-2642-2644+2649-2663
- NOTE  
 \*1 CONT. ON ISO. MCFI INC 4  
 \*2 CONT. ON ISO MCFI-INC 31  
 ▲ THIS SYMBOL DENOTES MATERIAL THAT IS PART OF PREASSEMBLED SECTION. IT IS TO BE USED BY INSPECTOR FOR FIT-UP AND HEAT NUMBER CHECK ONLY.  
 \* BORE ENDS AT WELDS NCIF 525, NCIF 536, NCIF 530 TO SCH. 160 2" W. HUGGS-11
- LAST FLANGE JOINT NO. USED 3

REVISIONS: 17 (11-18-78), 16 (11-18-78), 15 (11-18-78), 14 (11-18-78), 13 (11-18-78), 12 (11-18-78), 11 (11-18-78), 10 (11-18-78), 9 (11-18-78), 8 (11-18-78), 7 (11-18-78), 6 (11-18-78), 5 (11-18-78), 4 (11-18-78), 3 (11-18-78), 2 (11-18-78), 1 (11-18-78), 0 (11-18-78)

ADDITIONAL NOTES: 14 (11-18-78) REV TO ADD FLAGS AT VLV. INC 1, 2, 3, 9, 28, 29, 30, 31, 32, 33, 34, 35, 36, 37, 38, 39, 40, 41, 42, 43, 44, 45, 46, 47, 48, 49, 50, 51, 52, 53, 54, 55, 56, 57, 58, 59, 60, 61, 62, 63, 64, 65, 66, 67, 68, 69, 70, 71, 72, 73, 74, 75, 76, 77, 78, 79, 80, 81, 82, 83, 84, 85, 86, 87, 88, 89, 90, 91, 92, 93, 94, 95, 96, 97, 98, 99, 100

8903220516

PDR RIDS

