

INSERVICE INSPECTION

REV. 17	ISO. NO: MC-FI-ICF 13	BUILDING: REACTOR
	DUKE PIPING CLASS: B ASME SECT. III	R-6
	SYSTEM SYMBOL: CF FEEDWATER SYS.	
	PIPING SPEC.: CF-04, PS 900.5	
	DRAWING NO.: MC-1403-06.20-01	
	PROJECT: MCGUIRE	

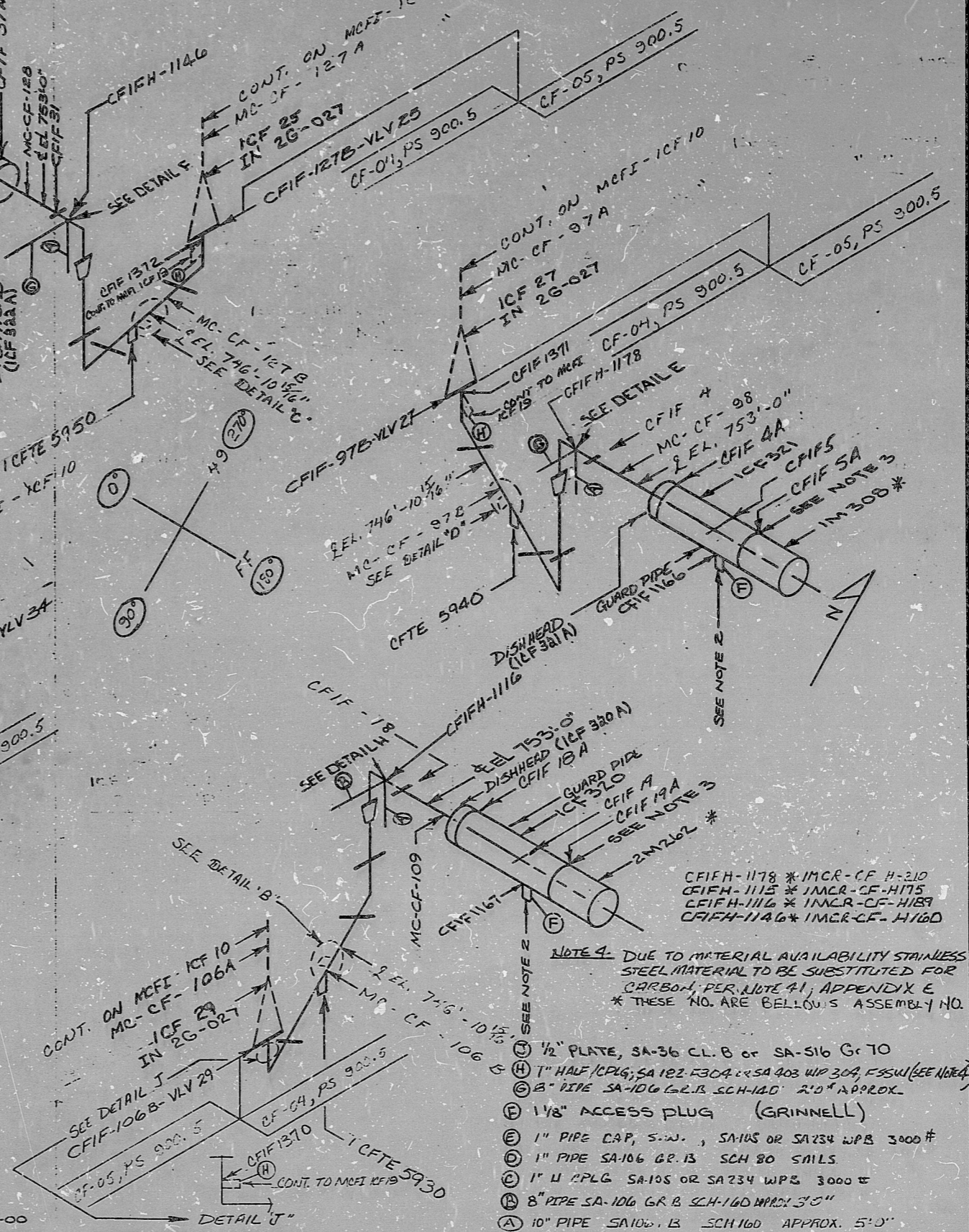
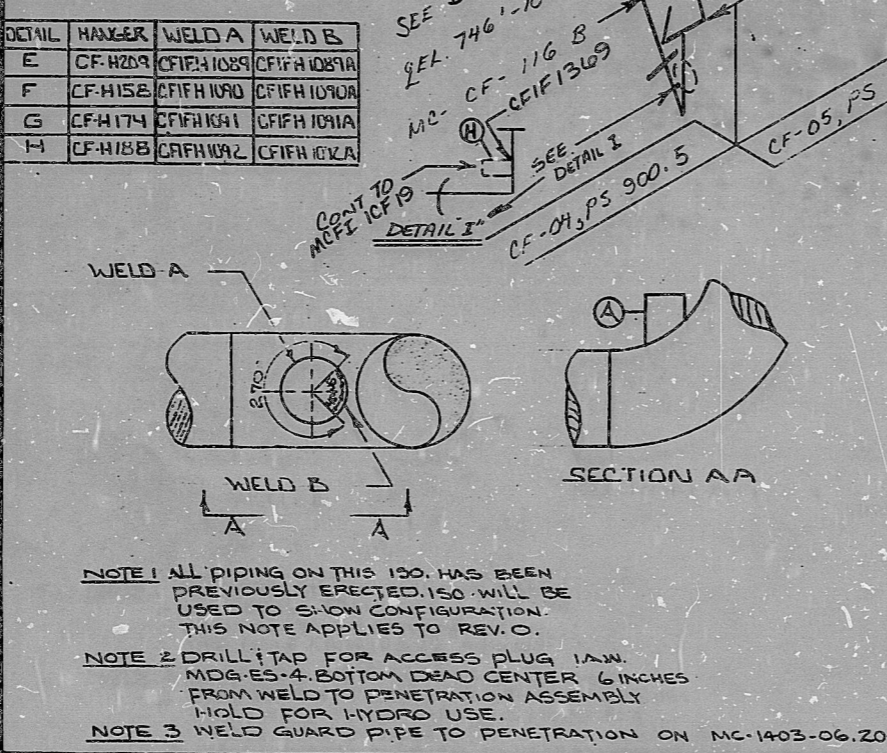
NO.	ORIG. DATE	CHKD. DATE	APPR. DATE
1	1-26-78	1-27-78	1-27-78
2	1-26-78	1-27-78	1-27-78
3	1-26-78	1-27-78	1-27-78
4	1-26-78	1-27-78	1-27-78
5	1-26-78	1-27-78	1-27-78
6	1-26-78	1-27-78	1-27-78
7	1-26-78	1-27-78	1-27-78
8	1-26-78	1-27-78	1-27-78
9	1-26-78	1-27-78	1-27-78
10	1-26-78	1-27-78	1-27-78
11	1-26-78	1-27-78	1-27-78
12	1-26-78	1-27-78	1-27-78
13	1-26-78	1-27-78	1-27-78
14	1-26-78	1-27-78	1-27-78
15	1-26-78	1-27-78	1-27-78
16	1-26-78	1-27-78	1-27-78
17	1-26-78	1-27-78	1-27-78

11	CHANGE BELLOWS ASS. NO. FROM 10428 TO 10429	REA	HAW	HKS
12	CORRECTED WELD NO.	REA	HAW	HKS
13	REN TO ADD WELDS CFIF 1131, 1132, 1133, 1134	REA	HAW	HKS
14	ADD SUB. I.D. FOR DISHHEAD - ICF 320A	REA	HAW	HKS
15	ADD WELDS CFIF 1089A, 1090A, 1091A, 1092A, DETAILS E THRU H PER V.N. 14795	REA	HAW	HKS
16	ADD WELDS CFIF 1164, 1167, MATERIAL F AND NOTES 2-3	REA	HAW	HKS
17	ADD WELDS CFIF 1164, 1167, MATERIAL F AND NOTES 2-3	REA	HAW	HKS
18	ADD WELDS CFIF 1164, 1167, MATERIAL F AND NOTES 2-3	REA	HAW	HKS
19	ADD WELDS CFIF 1164, 1167, MATERIAL F AND NOTES 2-3	REA	HAW	HKS
20	ADD WELDS CFIF 1164, 1167, MATERIAL F AND NOTES 2-3	REA	HAW	HKS

FOR INFORMATION ONLY

SI APERTURE CARD

DETAIL	WELDER	WELD A	WELD B
E	CF-H209	CFIF 1089	CFIF 1090
F	CF-H158	CFIF 1091	CFIF 1092
G	CF-H174	CFIF 1093	CFIF 1094
H	CF-H188	CFIF 1095	CFIF 1096



DURHAM-PANEL, INC. CHARLOTTE 178

8903220484

PDR RIDS

