

INSERVICE INSPECTION

REV. 11
 BUILDING: REACTOR
 ISO. NO.: MCFI-ICF 10
 DUKE PIPING CLASS: ASME SECT III
 SYSTEM SYMBOL: CF FEEDWATER SYS.
 PIPING SPEC: CF-05, PS 900.5
 DRAWING NO.: MC-1403-06.20-01
 PROJECT: M²GUIRE

REV.	DATE	BY	CHKD.	APPR.
1	10-11-77	KRB/PAI		
2	5-25-78	WJG		
3	12-27-78	WJG		
4	12-27-78	WJG		
5	12-27-78	WJG		
6	12-27-78	WJG		
7	12-27-78	WJG		
8	12-27-78	WJG		
9	12-27-78	WJG		
10	12-27-78	WJG		
11	12-27-78	WJG		

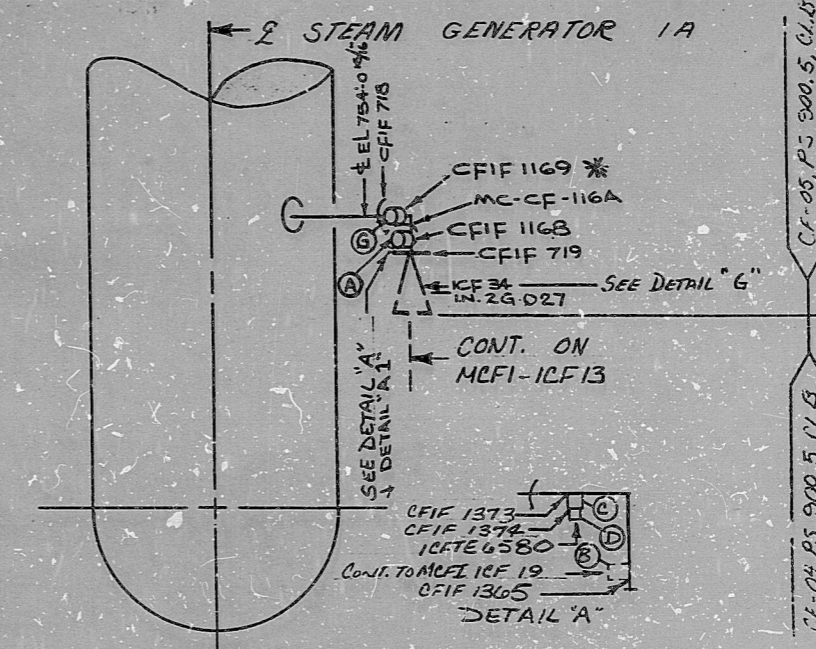
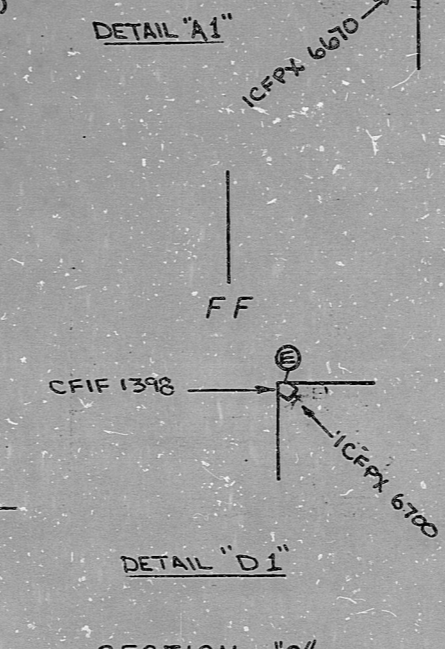
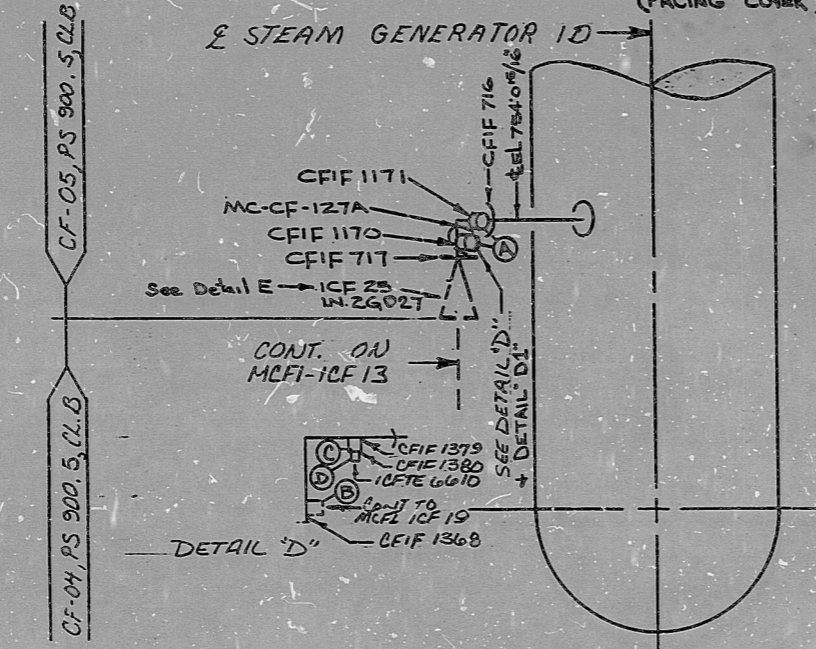
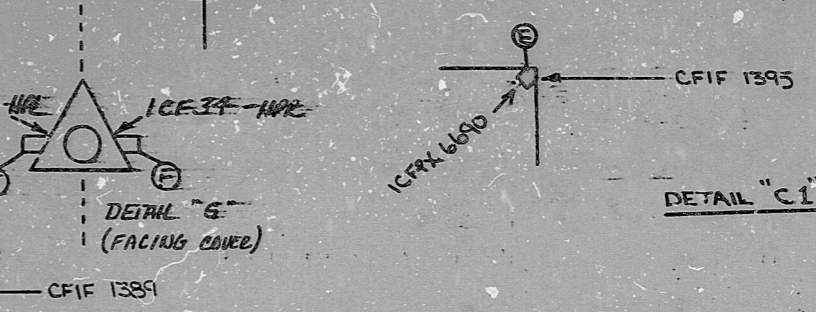
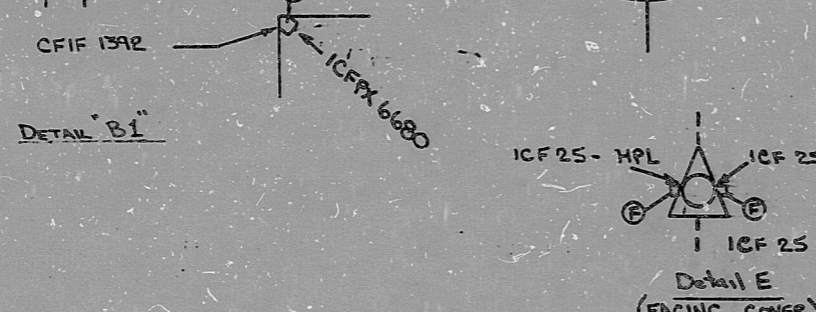
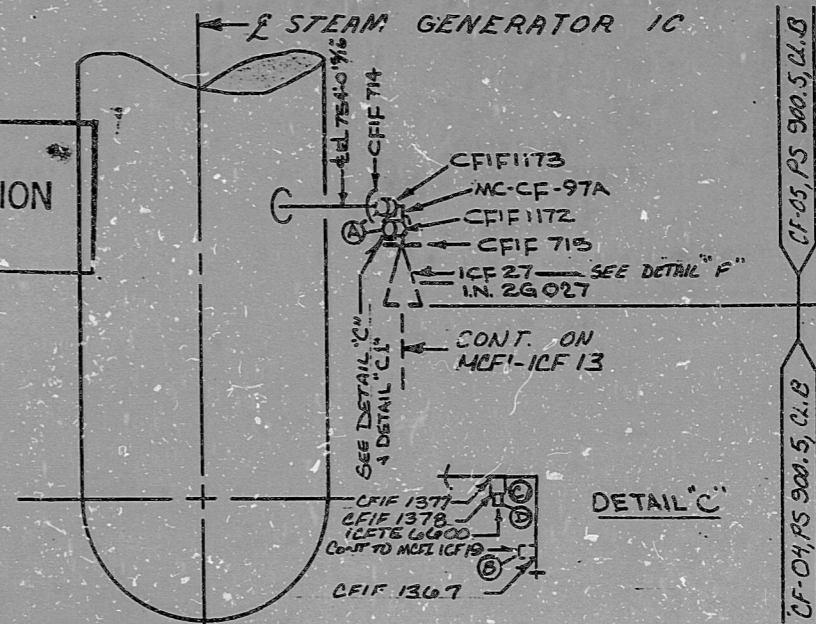
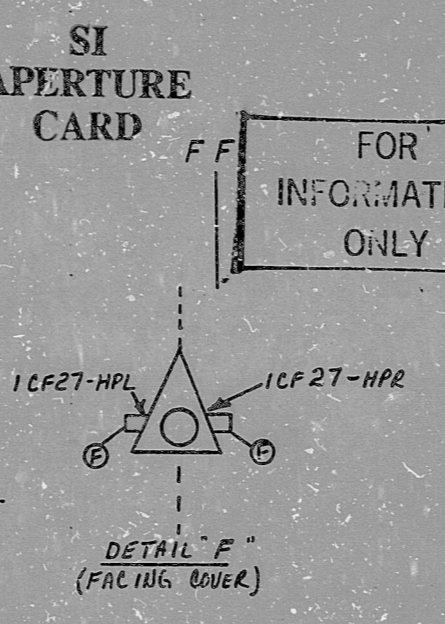
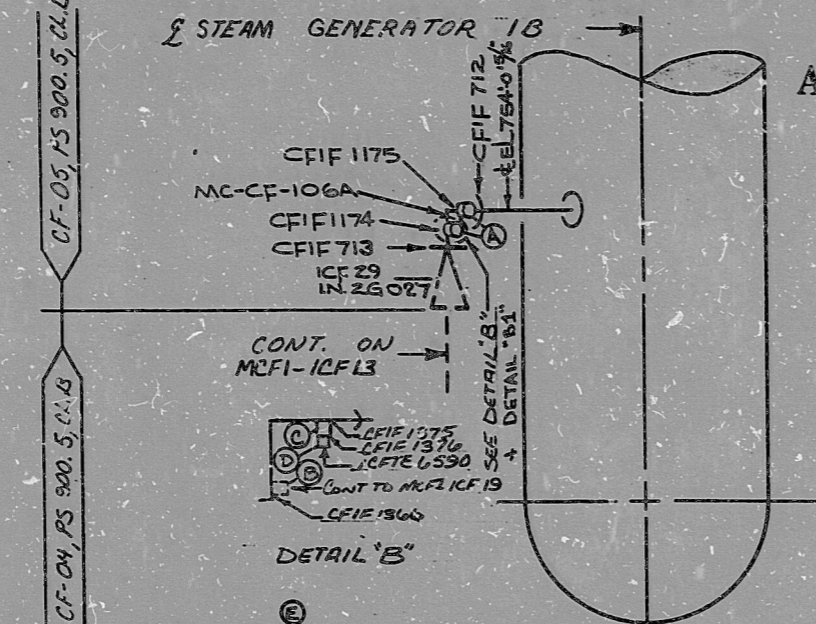
REVISION QA CONDITION I

4 RELISE TO ADD DETAILS A, B, C, D, E, F, G, H, I, J, K, L, M, N, O, P, Q, R, S, T, U, V, W, X, Y, Z, AA, AB, AC, AD, AE, AF, AG, AH, AI, AJ, AK, AL, AM, AN, AO, AP, AQ, AR, AS, AT, AU, AV, AW, AX, AY, AZ, BA, BB, BC, BD, BE, BF, BG, BH, BI, BJ, BK, BL, BM, BN, BO, BP, BQ, BR, BS, BT, BU, BV, BW, BX, BY, BZ, CA, CB, CC, CD, CE, CF, CG, CH, CI, CJ, CK, CL, CM, CN, CO, CP, CQ, CR, CS, CT, CU, CV, CW, CX, CY, CZ, DA, DB, DC, DD, DE, DF, DG, DH, DI, DJ, DK, DL, DM, DN, DO, DP, DQ, DR, DS, DT, DU, DV, DW, DX, DY, DZ, EA, EB, EC, ED, EE, EF, EG, EH, EI, EJ, EK, EL, EM, EN, EO, EP, EQ, ER, ES, ET, EU, EV, EW, EX, EY, EZ, FA, FB, FC, FD, FE, FF, FG, FH, FI, FJ, FK, FL, FM, FN, FO, FP, FQ, FR, FS, FT, FU, FV, FW, FX, FY, FZ, GA, GB, GC, GD, GE, GF, GG, GH, GI, GJ, GK, GL, GM, GN, GO, GP, GQ, GR, GS, GT, GU, GV, GW, GX, GY, GZ, HA, HB, HC, HD, HE, HF, HG, HH, HI, HJ, HK, HL, HM, HN, HO, HP, HQ, HR, HS, HT, HU, HV, HW, HX, HY, HZ, IA, IB, IC, ID, IE, IF, IG, IH, II, IJ, IK, IL, IM, IN, IO, IP, IQ, IR, IS, IT, IU, IV, IW, IX, IY, IZ, JA, JB, JC, JD, JE, JF, JG, JH, JI, JJ, JK, JL, JM, JN, JO, JP, JQ, JR, JS, JT, JU, JV, JW, JX, JY, JZ, KA, KB, KC, KD, KE, KF, KG, KH, KI, KJ, KK, KL, KM, KN, KO, KP, KQ, KR, KS, KT, KU, KV, KW, KX, KY, KZ, LA, LB, LC, LD, LE, LF, LG, LH, LI, LJ, LK, LL, LM, LN, LO, LP, LQ, LR, LS, LT, LU, LV, LW, LX, LY, LZ, MA, MB, MC, MD, ME, MF, MG, MH, MI, MJ, MK, ML, MM, MN, MO, MP, MQ, MR, MS, MT, MU, MV, MW, MX, MY, MZ, NA, NB, NC, ND, NE, NF, NG, NH, NI, NJ, NK, NL, NM, NN, NO, NP, NQ, NR, NS, NT, NU, NV, NW, NX, NY, NZ, OA, OB, OC, OD, OE, OF, OG, OH, OI, OJ, OK, OL, OM, ON, OO, OP, OQ, OR, OS, OT, OU, OV, OW, OX, OY, OZ, PA, PB, PC, PD, PE, PF, PG, PH, PI, PJ, PK, PL, PM, PN, PO, PP, PQ, PR, PS, PT, PU, PV, PW, PX, PY, PZ, QA, QB, QC, QD, QE, QF, QG, QH, QI, QJ, QK, QL, QM, QN, QO, QP, QQ, QR, QS, QT, QU, QV, QW, QX, QY, QZ, RA, RB, RC, RD, RE, RF, RG, RH, RI, RJ, RK, RL, RM, RN, RO, RP, RQ, RR, RS, RT, RU, RV, RW, RX, RY, RZ, SA, SB, SC, SD, SE, SF, SG, SH, SI, SJ, SK, SL, SM, SN, SO, SP, SQ, SR, SS, ST, SU, SV, SW, SX, SY, SZ, TA, TB, TC, TD, TE, TF, TG, TH, TI, TJ, TK, TL, TM, TN, TO, TP, TQ, TR, TS, TT, TU, TV, TW, TX, TY, TZ, UA, UB, UC, UD, UE, UF, UG, UH, UI, UJ, UK, UL, UM, UN, UO, UP, UQ, UR, US, UT, UY, UZ, VA, VB, VC, VD, VE, VF, VG, VH, VI, VJ, VK, VL, VM, VN, VO, VP, VQ, VR, VS, VT, VU, VV, VW, VX, VY, VZ, WA, WB, WC, WD, WE, WF, WG, WH, WI, WJ, WK, WL, WM, WN, WO, WP, WQ, WR, WS, WT, WU, WV, WW, WX, WY, WZ, XA, XB, XC, XD, XE, XF, XG, XH, XI, XJ, XK, XL, XM, XN, XO, XP, XQ, XR, XS, XT, XU, XV, XW, XX, XY, XZ, YA, YB, YC, YD, YE, YF, YG, YH, YI, YJ, YK, YL, YM, YN, YO, YP, YQ, YR, YS, YT, YU, YV, YW, YX, YY, YZ, ZA, ZB, ZC, ZD, ZE, ZF, ZG, ZH, ZI, ZJ, ZK, ZL, ZM, ZN, ZO, ZP, ZQ, ZR, ZS, ZT, ZU, ZV, ZW, ZX, ZY, ZZ

NO.	DATE	DESCRIPTION
5	12-27-78	Revised per MG-1117, WR 92200 NISM
6	12-27-78	Revised per MG-1117 Rev. 3 (92860)
7	12-27-78	Add welds for cover of ICF 25
8	12-27-78	Clarify Mat. F
9	12-27-78	SEAL WELD MAKE (LINES ON) ICF 27 & 34 PER LSN 93740 & 93741

FOR INFORMATION ONLY

NOTES
 #1) DUE TO MATERIAL AVAILABILITY STAINLESS STEEL MATERIAL MAY BE SUBSTITUTED FOR CARBON. PER NOTE #1, APPENDIX E
 * WELD CFIF 1169 WILL BE A 1/4" FILLET WELD PER NCF 875
 10 ADDED MAIL G TO SIG 1A BY VN 451
 11 CHANGED SEAL WELD TO FILLET WELD FOR CFIF 1169 PER NCF 875



- ⓐ 1" THERMOWELL, SA 479-304, STAINLESS STEEL
- ⓑ 3/4" HALF (PLG), SA 105 SA 234-WPB; 3000#, FSSW
- ⓒ 1" HALF (PLG), SA 182-F304, SA 403-WP304; 3000#, FSSW (SEE NOTE #1)
- ⓓ 1/8" ACCESS PLUG (GRINNELL) CONST. IAW. MDG-ES-4
- ⓔ ACCESS PLUG 1/4" (GRINNELL) CS SA 105
- ⓕ HINGE PIN PLUG - CARBON STEEL
- ⓖ 1" HALF (PLG), SA 182 F304 or SA 403 WP 304 6000# FSSW (NOTE 1)

PDR RIDS

8903220475

