

INSTRUMENTATION

REV. 21
 BUILDING: REACTOR
 ZN R9 RB
 ISO. NO.: MCFI-ICF8
 DUKE PIPING CLASS: ASME SECT III CL B
 SYSTEM SYMBOL: FEED WATER SYST.
 PIPING SPEC.: CF 88 PS-900.5,
 DRAWING NO.: MC-1403-C6-20-00401
 PROJECT: MCGUIRE

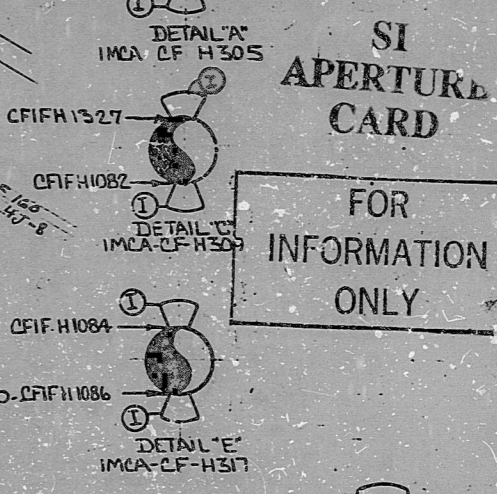
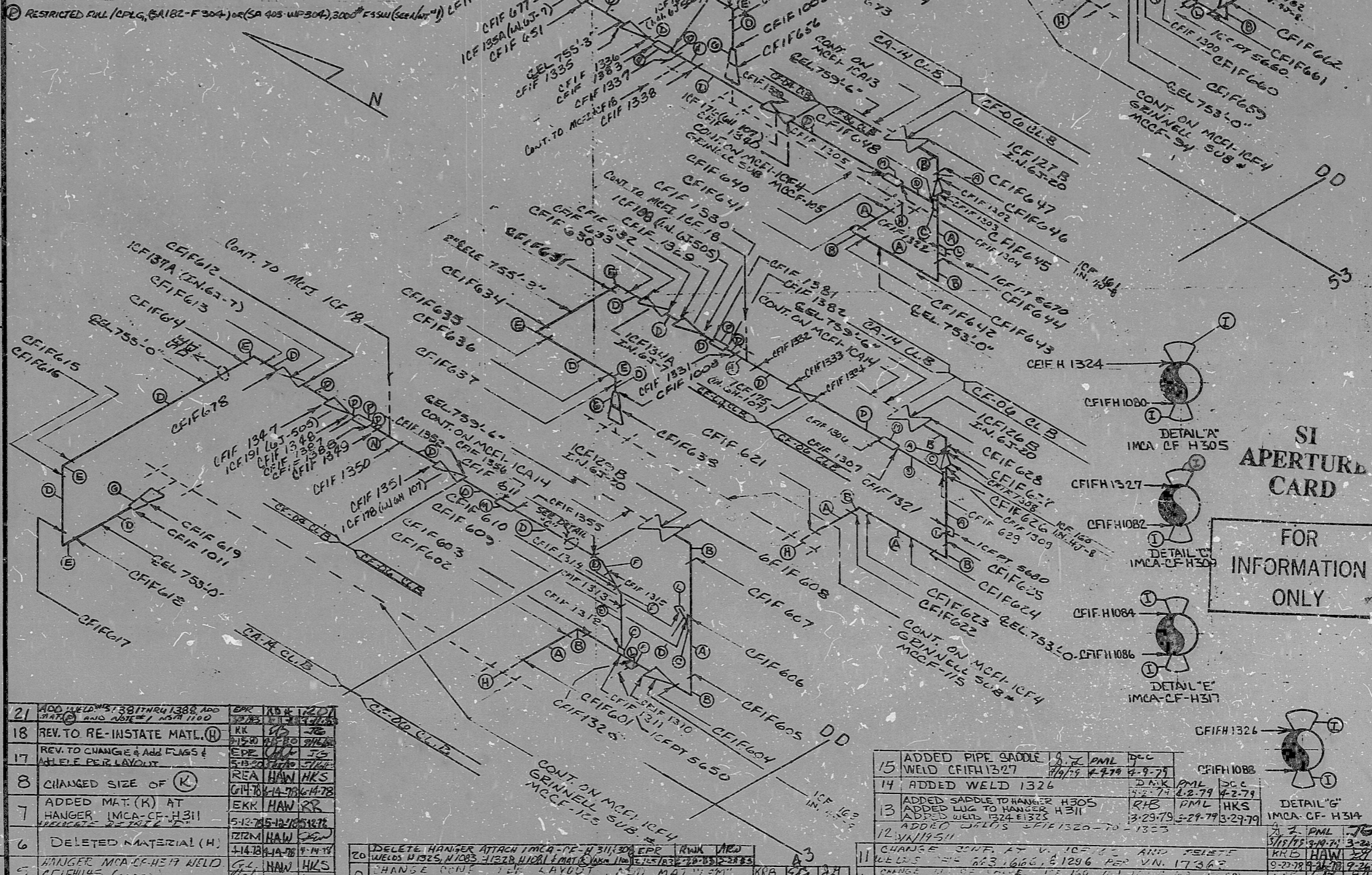
REV.	DATE	BY	CHKD	APPR	DATE
21	11-17-77	HKS			
20	11-17-77	HKS			
19	11-17-77	HKS			
18	11-17-77	HKS			
17	11-17-77	HKS			
16	11-17-77	HKS			
15	11-17-77	HKS			
14	11-17-77	HKS			
13	11-17-77	HKS			
12	11-17-77	HKS			
11	11-17-77	HKS			
10	11-17-77	HKS			
9	11-17-77	HKS			
8	11-17-77	HKS			
7	11-17-77	HKS			
6	11-17-77	HKS			
5	11-17-77	HKS			
4	11-17-77	HKS			
3	11-17-77	HKS			
2	11-17-77	HKS			
1	11-17-77	HKS			
0	11-17-77	HKS			
NO					

MATERIAL SCHEDULE

① 6" PIPE, SA-106, B, SCH. 80 .432 (APPX 38')
 ② 6" 90° ELL, SA-234, WPB, SCH. 80 (12)
 ③ 2" N/CPL, (SA-106) OR (SA-234, WPB) 3000# (4)
 ④ 2" PIPE, SA-106, B, SCH. 80 .218 (APPX 76' 0")
 ⑤ 2" 90° ELL, (SA-106) OR (SA-234, WPB) 3000# (12)
 ⑥ 2" 45° ELL, (SA-106) OR (SA-234, WPB) 3000# (1)
 ⑦ 4" x 2" RED. BW SA-234 WPB SCH. 80 (4)
 ⑧ 16" x 6" TEE SA234/WPB SCH. 80
 ⑨ PIPE SADDLE, A-36 CS., 2"

⑩ 3/4" H/COUPL SW FS. SA-106, SA-234, WPB, 3000#
 ⑪ 2" TEE, (SA106) OR (SA234, WPB) 3000# FSSW
 ⑫ RESTRICTED FULL (CPLG, SA182-F 304) OR (SA 403 WP 304), 3000# FSSW (see note 1)

NOTE
 #1) FULL COUPLING, BORED TO .230" FOR FLOW RESTRICTION-1



REV.	DATE	BY	CHKD	APPR	DATE
21	11-17-77	HKS			
18	11-17-77	HKS			
17	11-17-77	HKS			
8	11-17-77	HKS			
7	11-17-77	HKS			
6	11-17-77	HKS			
5	11-17-77	HKS			

REV.	DATE	BY	CHKD	APPR	DATE
20	11-17-77	HKS			
9	11-17-77	HKS			
16	11-17-77	HKS			

15	ADDED PIPE SADDLE WELD ICF1327	PML	DCG	11-17-77	11-17-77
14	ADDED WELD 1326	PML	DCG	11-17-77	11-17-77
13	ADDED SADDLE TO HANGER H305	RHE	PML	11-17-77	11-17-77
12	ADDED WELD 1324	RHE	PML	11-17-77	11-17-77
11	CHANGE SIZE AT V. 10-12 AND DELETE WELDS 1325, 1326, 1327, 1328 PER V.N. 17362	HKS	HKS	11-17-77	11-17-77
10	CHANGE HANGER ATTACHMENT TO V. 10-12 AND DELETE WELDS 1325, 1326, 1327, 1328 PER V.N. 17362	HKS	HKS	11-17-77	11-17-77
9	DELETE HANGER ATTACHMENT TO V. 10-12 AND DELETE WELDS 1325, 1326, 1327, 1328 PER V.N. 17362	HKS	HKS	11-17-77	11-17-77
8	ADDED WELD 1324 THRU 1325	HKS	HKS	11-17-77	11-17-77
7	ADDED WELD 1324 THRU 1325	HKS	HKS	11-17-77	11-17-77
6	ADDED WELD 1324 THRU 1325	HKS	HKS	11-17-77	11-17-77
5	ADDED WELD 1324 THRU 1325	HKS	HKS	11-17-77	11-17-77

DUNCAN-PARRELL, C. CHARLOTTE 1979

8903220466

PDR RIDS

