

INSERVICE INSPECTION

ISO NO: MCFI-ICF4

DUKE PIPING CLASS: B

SYSTEM SYMBOLIC: CF FEEDWATER

REACTOR # 1

REV: 20

BUILDING: A-9

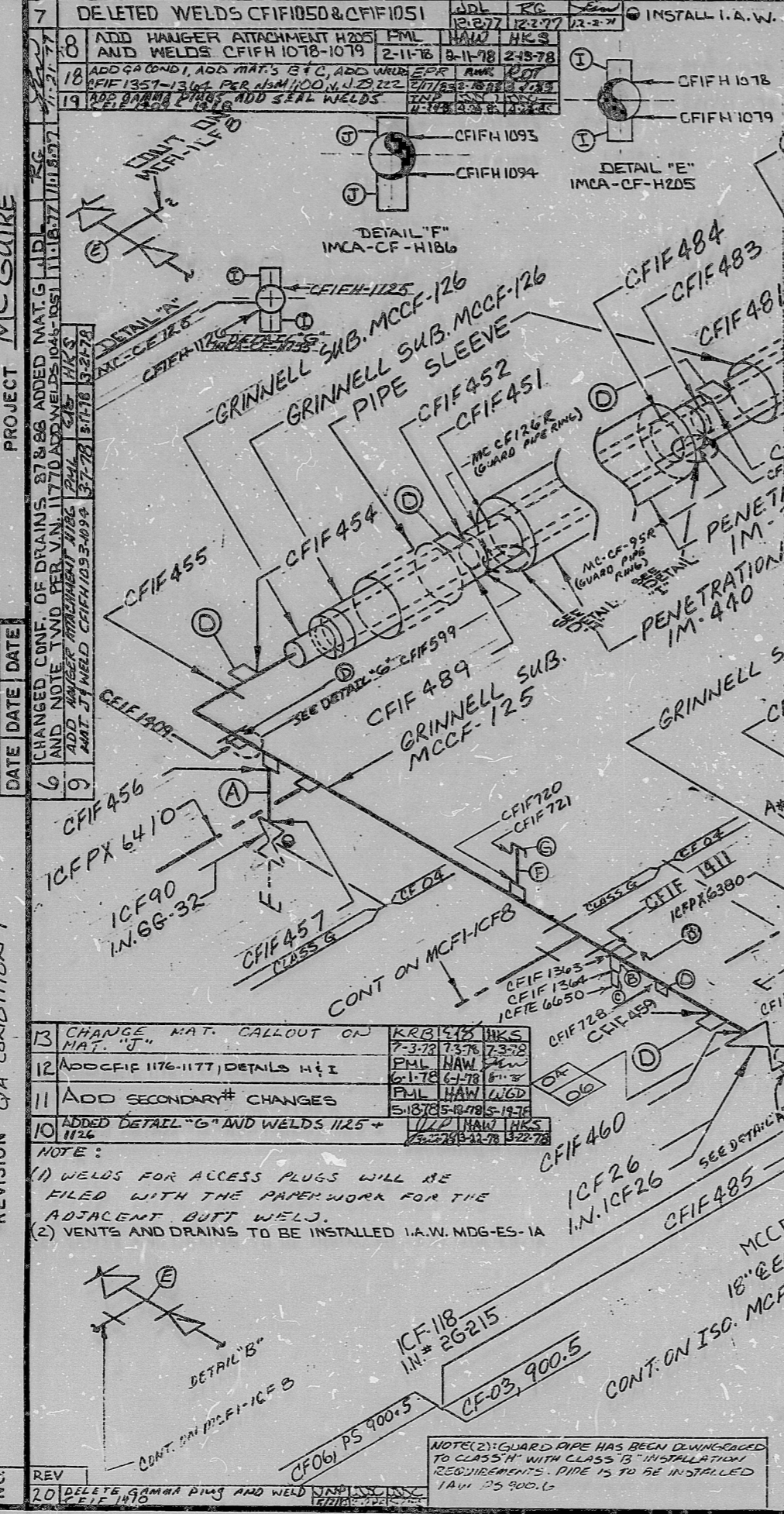
REACTOR # 1

PIPING SPEC: CF-0496 PS 900.5 901.2, 900.6

DRAWING NO.: MC-1403-06.20-00,01,02

PROJECT: MCGUIRE

REV	DATE	DESCRIPTION
20	12-27-77	DELETE GAMMA PING AND WELD
19	12-27-77	ADD HANGER ATTACHMENT H205 AND WELDS
18	12-27-77	ADD GRINDING AND WELDS
17	12-27-77	REVIS
16	12-27-77	ADD INST. TAPS
15	12-27-77	ADD WELDS
14	12-27-77	REVIS
13	12-27-77	CHANGE MAT. CALLOUT ON
12	12-27-77	ADD CFIF 1176-1177 DETAILS
11	12-27-77	ADD SECONDARY CHANGES
10	12-27-77	ADDED DETAIL G AND WELDS
9	12-27-77	ADD WELDS
8	12-27-77	ADD WELDS
7	12-27-77	DELETE WELDS
6	12-27-77	ADD WELDS
5	12-27-77	ADD WELDS
4	12-27-77	ADD WELDS
3	12-27-77	ADD WELDS
2	12-27-77	ADD WELDS
1	12-27-77	ADD WELDS
0	12-27-77	RELEASED FOR CONSTRUCTION



DELETED WELDS CFIF1050 & CFIF1051

INSTALL I.A.W. MDG-ES-1B

REVIS VENT W/LV ICF88 FOR BONNET ACCESS

ADD HANGER ATTACHMENT H205 AND WELDS CFIF 1078-1079

ADD GRINDING AND WELDS PER ASM 100.4 N.2.2.2

ADD GRINDING AND WELDS

CHANGE MAT. CALLOUT ON MAT. "H"

ADD CFIF 1176-1177 DETAILS H & I

ADD SECONDARY CHANGES

ADDED DETAIL "G" AND WELDS 1125 + 1126

NOTE:

(1) WELDS FOR ACCESS PLUGS WILL BE FILED WITH THE PAPERWORK FOR THE ADJACENT BUTT WELDS.

(2) VENTS AND DRAINS TO BE INSTALLED I.A.W. MDG-ES-1A

NOTE (2): GUARD PIPE HAS BEEN DIMENSIONED TO CLASS "B" WITH CLASS "B" INSTALLATION REQUIREMENTS. PIPE IS TO BE INSTALLED IAW 25.900.6

BILL OF MATERIAL

- (A) 1" PIPE, SA-106, B, SCH. 80, .179" WALL (APP. 2'-0") APERTURE
- (B) 3/4" HALF CPLG, SA-105 OR SA 234 WPB, 3000#, FSSW
- (C) 1" THERMOWELL, SA 419, TP 304, PART NO. 200 450 2 1 STAINLESS
- (D) 1/8" CARBON STEEL ACCESS PLUG
- (E) 1 1/2" TEE A-234 WPB SCH. 80
- (F) 3/4" PIPE SA-106 B, SCH. 80 APPROX. 2'-0"
- (G) 3/4" SW. PIPE CAP A-105 OR A234 WPB 3000#

FOR INFORMATION ONLY

SI APERTURE CARD

UNGSAN-PANEL, INC., CHARLOTTE 278

8903220457

PDR RIDS

