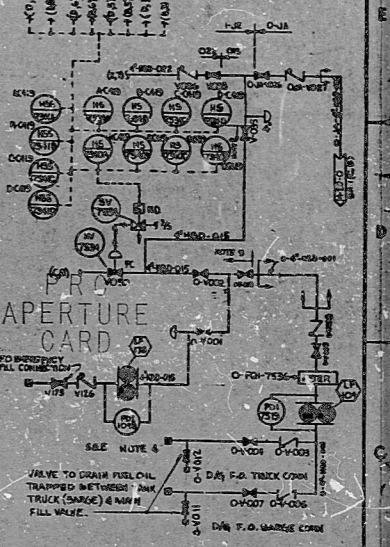


SYSTEM JE

REF. NO.	REFERENCE DRAWINGS	DATE	BY
1	FUEL OIL SYSTEM	11-19-58	JE
2	GENERAL REQUIREMENTS SHEET FOR SYSTEMS	1-10-57	JE
3	LOGIC (BASE-ON) APPENDICES	1-10-57	JE
4	LOGIC (PUMP) CONTROL	8-9-58	JE
5	LOCAL ENGINE CONTROL PANEL (M-30) (M-30) (M-30)	8-9-58	JE
6	ENGINE PANEL CONTROL PANEL (M-30) (M-30) (M-30)	10-10-57	JE

- NOTES:**
- D-G SKID FUEL SYSTEM AND DAY TANKS ARE SYSTEM NO. 1.
 - DIESEL GENERATORS AS-400 THRU DS-400 ARE SHOP SPECIFIED SKID UNITS BY VENDOR.
 - FUEL OIL STORAGE TANK NOZZLE SERVICE:
 - ① FILL (4")
 - ② SAMPLE (1")
 - ③ VENT/OVERFLOW (1/2")
 - ④ DAY TANK OVERFLOW INLET (1")
 - ⑤ LEVEL GAUGE/TIME HEAD/VENT & SAMPLE OPENING (1/2")
 - ⑥ HIGH LEVEL ALARM FILL VALVE (1/2")
 - ⑦ MANHOLE (30")
 - ⑧ DRAIN OFF (1/2") AND SAMPLE CONNECTION
 - ⑨ PUMP INLET (2")
 - TRUCK FILL CONNECTION LOCATED AT BARGE SLIP.
 - FUEL OIL SYSTEM IS FURTHER DETAILED IN REFERENCE 1 FOR INTERFACES (A) AND (B) SEE REFERENCES 1 AND 2.
 - THIS P&ID CONTAINS SYSTEMS OR PORTIONS OF SYSTEMS:
 - JA - AUXILIARY OIL STORAGE AND TRANSFER
 - TE - DIESEL FUEL OIL TRANSFER AND STORAGE
 - AFTER START-UP PUSHING IS COMPLETED VALVED TO CAN.
 - RY-6000-1 IS A MULTI-POINT SIGNAL CONDITIONER SHARED BY 1-6000 A, C, E AND G. PY-6000-2 IS SHARED BY 1-6000 B, D, F AND H.
 - PUMPING DOWNSTREAM OF THE INDICATED BOUNDARY REQUIRES REFINING ANALYSIS FOR SUP-TOP-NO-FOPD SPECTRA (ANALYSIS) TO ALLOW FOR EMERGENCY REPELLING OF THE D-G STORAGE TANKS.



①	WATER TIGHT	AS BUILT
②	WATER TIGHT	AS BUILT
③	WATER TIGHT	AS BUILT
④	WATER TIGHT	AS BUILT
⑤	WATER TIGHT	AS BUILT
⑥	WATER TIGHT	AS BUILT
⑦	WATER TIGHT	AS BUILT
⑧	WATER TIGHT	AS BUILT
⑨	WATER TIGHT	AS BUILT
⑩	WATER TIGHT	AS BUILT
⑪	WATER TIGHT	AS BUILT
⑫	WATER TIGHT	AS BUILT
⑬	WATER TIGHT	AS BUILT
⑭	WATER TIGHT	AS BUILT
⑮	WATER TIGHT	AS BUILT
⑯	WATER TIGHT	AS BUILT
⑰	WATER TIGHT	AS BUILT
⑱	WATER TIGHT	AS BUILT
⑲	WATER TIGHT	AS BUILT
⑳	WATER TIGHT	AS BUILT
㉑	WATER TIGHT	AS BUILT
㉒	WATER TIGHT	AS BUILT
㉓	WATER TIGHT	AS BUILT
㉔	WATER TIGHT	AS BUILT
㉕	WATER TIGHT	AS BUILT
㉖	WATER TIGHT	AS BUILT
㉗	WATER TIGHT	AS BUILT
㉘	WATER TIGHT	AS BUILT
㉙	WATER TIGHT	AS BUILT
㉚	WATER TIGHT	AS BUILT
㉛	WATER TIGHT	AS BUILT
㉜	WATER TIGHT	AS BUILT
㉝	WATER TIGHT	AS BUILT
㉞	WATER TIGHT	AS BUILT
㉟	WATER TIGHT	AS BUILT
㊱	WATER TIGHT	AS BUILT
㊲	WATER TIGHT	AS BUILT
㊳	WATER TIGHT	AS BUILT
㊴	WATER TIGHT	AS BUILT
㊵	WATER TIGHT	AS BUILT
㊶	WATER TIGHT	AS BUILT
㊷	WATER TIGHT	AS BUILT
㊸	WATER TIGHT	AS BUILT
㊹	WATER TIGHT	AS BUILT
㊺	WATER TIGHT	AS BUILT
㊻	WATER TIGHT	AS BUILT
㊼	WATER TIGHT	AS BUILT
㊽	WATER TIGHT	AS BUILT
㊾	WATER TIGHT	AS BUILT
㊿	WATER TIGHT	AS BUILT

DEGTEL
SAN FRANCISCO

PUBLIC SERVICE ELECTRIC AND GAS COMPANY
HOPE CREEK GENERATING STATION

P&ID
DIESEL ENGINE AUXILIARY SYSTEMS
FUEL OIL

DATE: 11-19-58
DRAWN BY: M-30
CHECKED BY: B-10
SCALE: 1/8" = 1'-0"

RIDS

8307250798

