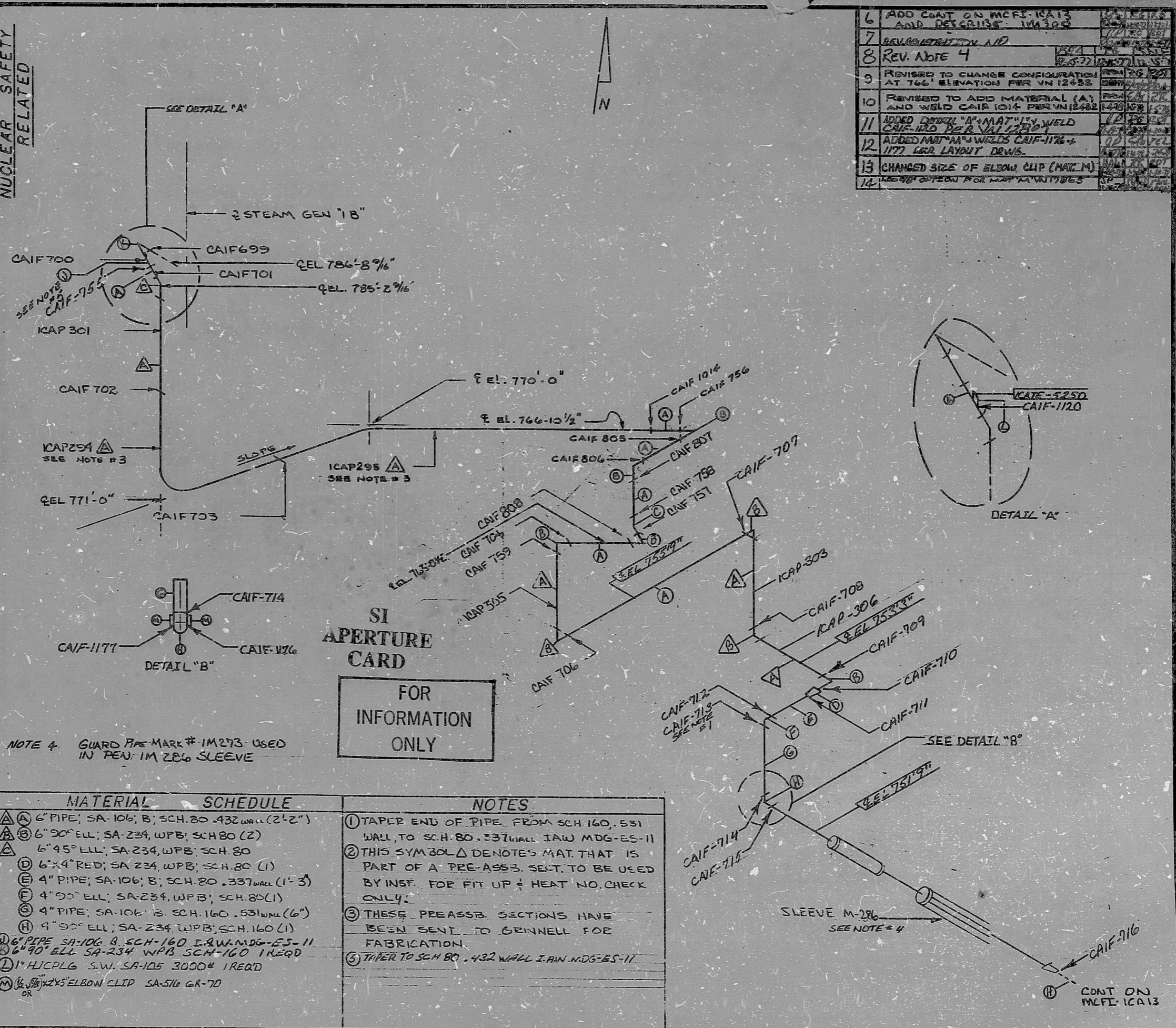


INSERVICE INSPECTION		REV. 14
ISO. NO.: MCFI ICA19		BUILDING: REACTOR ZN R6
DUKE PIPING CLASS: ASME SECT III CL B		
SYSTEM SYMBOL: AUX FEEDWATER		
PIPING SPEC: CA-14 PS-900.2		
DRAWING NO.: MC-1403-01.20-00401		
PROJECT MCGUIRE		
NUCLEAR SAFETY RELATED		
REV. NO.	DATE	DESCRIPTION
5	12/27/77	CHANGED CONFIGURATION & DELETED WELDS CNF 706, VN. 12152
4	12/27/77	ADDED ROLLING OFFSET AND WELDS 805-808 RE TO RELOCATE SUB ICAF-306
3	12/27/77	CHANGE CONFIRMED WELDS 855-857 RELATED SLEEVES 805-808, 809, 810, 811, 812, 813, 814, 815, 816, 817, 818, 819, 820, 821, 822, 823, 824, 825, 826, 827, 828, 829, 830, 831, 832, 833, 834, 835, 836, 837, 838, 839, 840, 841, 842, 843, 844, 845, 846, 847, 848, 849, 850, 851, 852, 853, 854, 855, 856, 857, 858, 859, 860, 861, 862, 863, 864, 865, 866, 867, 868, 869, 870, 871, 872, 873, 874, 875, 876, 877, 878, 879, 880, 881, 882, 883, 884, 885, 886, 887, 888, 889, 890, 891, 892, 893, 894, 895, 896, 897, 898, 899, 900, 901, 902, 903, 904, 905, 906, 907, 908, 909, 910, 911, 912, 913, 914, 915, 916, 917, 918, 919, 920, 921, 922, 923, 924, 925, 926, 927, 928, 929, 930, 931, 932, 933, 934, 935, 936, 937, 938, 939, 940, 941, 942, 943, 944, 945, 946, 947, 948, 949, 950, 951, 952, 953, 954, 955, 956, 957, 958, 959, 960, 961, 962, 963, 964, 965, 966, 967, 968, 969, 970, 971, 972, 973, 974, 975, 976, 977, 978, 979, 980, 981, 982, 983, 984, 985, 986, 987, 988, 989, 990, 991, 992, 993, 994, 995, 996, 997, 998, 999, 1000
1		ADDED NOTE 4
0		REL FOR CONSTRUCTION



6	ADD COAT ON MCFI-ICA13 AND DESCRIBE IM 309
7	REVISIONS AND
8	REV. NOTE 4
9	REVISED TO CHANGE CONFIGURATION AT 766' ELEVATION PER VN 12452
10	REVISED TO ADD MATERIAL (A) AND WELD CAIF 1014 PER VN 12482
11	ADDED DETAIL 'A' MATERIAL WELD CAIF-1120 PER VN 12504
12	ADDED MATERIAL WELDS CAIF-1176 + 1177 PER LAYOUT DWS.
13	CHANGED SIZE OF ELBOW CLIP (MAT. M)
14	REVISION FOR MAT. M 117865

NOTE 4. GUARD PIPE MARK # IM 273. USED IN PEN. IM 286 SLEEVE

MATERIAL	SCHEDULE	NOTES
(A) 6" PIPE; SA-106; B; SCH. 80 .432 WALL (2'-2")		(1) TAPER END OF PIPE FROM SCH 160, 531 WALL TO SCH 80 .537 WALL IAW MDG-ES-11
(B) 6" 90° ELL; SA-234, WPB; SCH 80 (2)		(2) THIS SYMBOL Δ DENOTES MAT. THAT IS PART OF A PRE-ASSB. SECT. TO BE USED BY INST. FOR FIT UP & HEAT NO. CHECK ONLY.
(C) 6" 45° ELL; SA-234, WPB; SCH. 80		(3) THESE PRE-ASSB. SECTIONS HAVE BEEN SENT TO GRINNELL FOR FABRICATION.
(D) 6" x 4" RED; SA-234, WPB; SCH. 80 (1)		(4) TAPER TO SCH 80 .432 WALL IAW MDG-ES-11
(E) 4" PIPE; SA-106; B; SCH. 80 .337 WALL (1'-3")		
(F) 4" 90° ELL; SA-234, WPB; SCH. 80 (1)		
(G) 4" PIPE; SA-106; B; SCH. 160 .531 WALL (6")		
(H) 4" 90° ELL; SA-234, WPB; SCH. 160 (1)		
(I) 6" PIPE SA-106; B; SCH. 160 IAW MDG-ES-11		
(J) 6" 90° ELL SA-234 WPB; SCH. 160 1REQD		
(K) 1" HICPLG S.W. SA-105 30004 1REQD		
(L) 1/2" x 1/2" x 2" ELBOW CLIP SA-516 GR-7D		

DURCAN-PARNELL, INC., CHARLOTTE 1976

8903220453

PDR RIDS

