

5	DELETED NOTES FROM WELDS 752 & 753. ADDED NOTES TO WELD 580	12/15/77	12/15/77	12/15/77
4	ADDED NOTE #5 CONCERNING WELDS CAIF-752 & 753	12/15/77	12/15/77	12/15/77
3	RELOCATED SUB ICAP-277 WELD CAIF-584	12/15/77	12/15/77	12/15/77
2	ADDED MATS J+K + NOTE #6 PER VPI #115 B.L. CHANGE CONF. DELETED SUBS 275, 278, 280 PER WELD 270-274 VPI #115	12/15/77	12/15/77	12/15/77
1	ADDED NOTE #4	12/15/77	12/15/77	12/15/77
0	REL FOR CONSTRUCTION	12/15/77	12/15/77	12/15/77
NO	REVISION	DATE	CHKD	APPR

INSERVICE INSPECTION

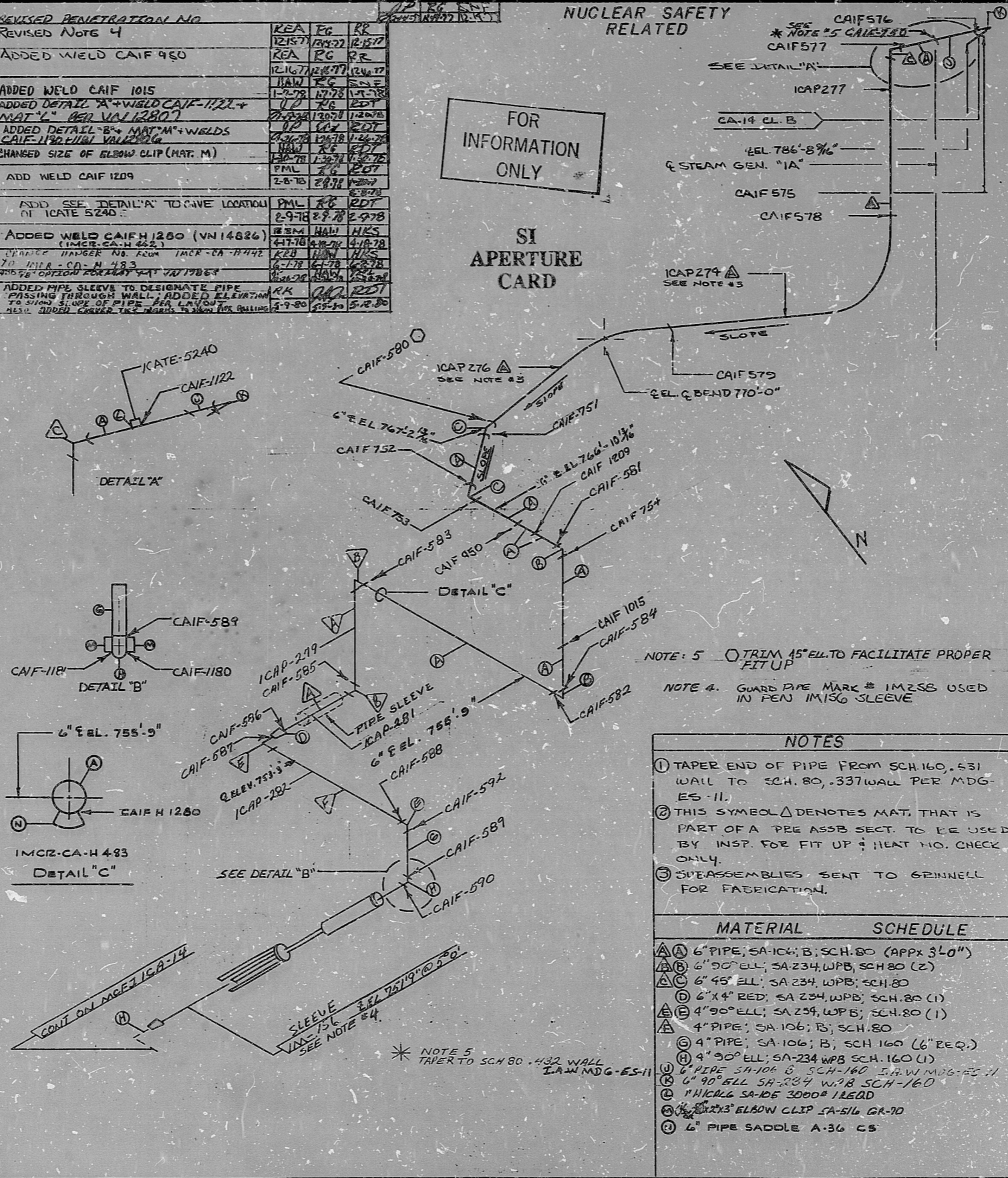
ISO NO: MCFI 1CA16	REV. 18
DUKE PIPING CLASS: ASME SECT III CL B	BUILDING: REACTOR ZN R6
SYSTEM SYMBOL: AUX FEEDWATER	PIPING SPEC: CA-14 PS 900.2
DRAWING NO: MC-1403-01.20-001-01	PROJECT: MCGUIRE

6	REVISED PENETRATION NO	12/15/77	12/15/77	12/15/77
7	REVISED NOTE 4	12/15/77	12/15/77	12/15/77
8	ADDED WELD CAIF 950	12/15/77	12/15/77	12/15/77
9	ADDED WELD CAIF 1015	12/15/77	12/15/77	12/15/77
10	ADDED DETAIL 'A' + WELD CAIF-1122 + MAT 'L' PER VPI #1280	12/15/77	12/15/77	12/15/77
11	ADDED DETAIL 'B' + MAT 'M' + WELDS CAIF-1180, 1181, 1182	12/15/77	12/15/77	12/15/77
12	CHANGED SIZE OF ELBOW CLIP (MAT. M)	12/15/77	12/15/77	12/15/77
13	ADD WELD CAIF 1209	12/15/77	12/15/77	12/15/77
14	ADD SEE DETAIL 'A' TO GIVE LOCATION OF ICATE 5240	12/15/77	12/15/77	12/15/77
15	ADDED WELD CAIF H 1280 (VPI 14826)	12/15/77	12/15/77	12/15/77
16	CHANGED HANGER NO. FROM IMCR-CA-H 434 TO IMCR-CA-H 483	12/15/77	12/15/77	12/15/77
17	ADDED OPTION FOR MAT 'M' VPI 17857	12/15/77	12/15/77	12/15/77
18	ADDED PIPE SLEEVES TO DESIGNATE PIPE PASSING THROUGH WALL. ADDED ELEVATIONS TO SHOW SLOPE OF PIPE PER LAYOUT. ALSO ADDED COVER TEST POINTS TO SHOW FOR BOLLING	12/15/77	12/15/77	12/15/77

NUCLEAR SAFETY RELATED

FOR INFORMATION ONLY

SI APERTURE CARD



- NOTE 5: TRIM 45° ELL TO FACILITATE PROPER FIT UP
- NOTE 4: GUARD PIPE MARK # 1M256 USED IN PEN 1M156 SLEEVE

- NOTES**
- TAPER END OF PIPE FROM SCH. 160, .631 WALL TO SCH. 80, .337 WALL PER MDG-ES-11.
 - THIS SYMBOL Δ DENOTES MAT. THAT IS PART OF A PRE ASSB SECT. TO BE USED BY INSP. FOR FIT UP; HEAT NO. CHECK ONLY.
 - SUBASSEMBLIES SENT TO GRINNELL FOR FABRICATION.

MATERIAL	SCHEDULE
Ⓐ 6" PIPE; SA-106; B; SCH. 80 (APPR 3/4")	
Ⓑ 6" 90° ELL; SA-234, WPB; SCH. 80 (2)	
Ⓒ 6" 45° ELL; SA-234, WPB; SCH. 80	
Ⓓ 6" X 4" RED; SA-234, WPB; SCH. 80 (1)	
Ⓔ 4" 90° ELL; SA-234, WPB; SCH. 80 (1)	
Ⓕ 4" PIPE; SA-106; B; SCH. 80	
Ⓖ 4" PIPE; SA-106; B; SCH. 160 (6" REQ)	
Ⓗ 4" 90° ELL; SA-234, WPB; SCH. 160 (1)	
Ⓘ 4" PIPE SA-106 B; SCH. 160; SA-W MDG-ES-11	
Ⓚ 6" 90° ELL SA-234 WPB; SCH. 160	
Ⓛ THICKW SA-106 3000# 1/2 ELL	
Ⓜ 3" 90° ELBOW CLIP SA-516 GR-70	
Ⓝ 6" PIPE SADDLE A-36 CS	

8903220418

PDR RIDS

