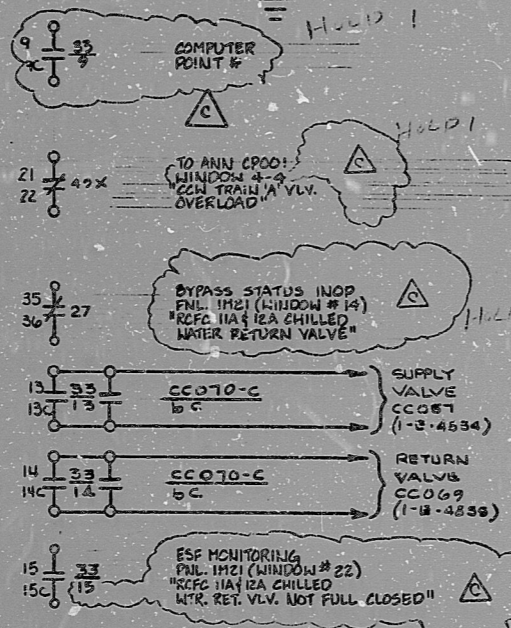


INFORMATION
THIS DOCUMENT IS
SUBJECT TO REVIEW IN
WITHOUT NOTICE
TO THE USER OF THIS
COPY



CS-MB (156A)

| BLOCK | CONTACT | POSITION | USE |
|-------|---------|----------|------|
| A | NC (1) | X | CONT |
| | NO (2) | | CONT |
| B | NC (3) | X | SP |
| | NO (4) | | SP |



SPRING RETURN TO AUTO
X DENOTES CONTACT CLOSED
G.E. CAT # CR2940W202B (CPI)

CCO70-C

| CONTACT | VALVE POSITION | USE |
|---------|----------------|-----------|
| 3C | CLOSE | SP |
| 4C | OPEN | THIS DWG. |
| 5C | | SP |
| 6C | | THIS DWG. |

TERA APERTURE CARD



33-C-070

| CONTACT | VALVE POSITION | | USE |
|---------|------------------------------------|------|-----------|
| | CLOSE | OPEN | |
| 1 | | | THIS DWG. |
| 2 | | | SPARE |
| 3 | | | THIS DWG. |
| 4 | | | THIS DWG. |
| 5 | | | THIS DWG. |
| 6 | | | SPARE |
| 7 | | | THIS DWG. |
| 8 | | | THIS DWG. |
| 9 | | | THIS DWG. |
| 10 | | | SPARE |
| 11 | | | SPARE |
| 12 | | | SPARE |
| 13 | | | THIS DWG. |
| 14 | | | THIS DWG. |
| 15 | | | THIS DWG. |
| 16 | | | SPARE |
| 17 | OPENS ON MECH. OVERLOAD ON CLOSING | | THIS DWG. |
| 18 | OPENS ON MECH. OVERLOAD ON OPENING | | THIS DWG. |

- REFERENCE DRAWINGS
- 0-E-0105 - ELECT. WIRING STANDARDS & SYMBOLS
 - 1-2-3181-SH.1 - CCW RCFC SUPPLY & RETURN VALVES LOGIC DIAGRAM
 - 1-E-6849 - CONTROL WIRING DIAGRAM RCFC CHILLED WATER RETURN VALVE CCO70

NOTE
1K516 - CONTACT ACTUATES ON SAFETY INJECTION SIGNAL

LEGEND
IRROO2 - SOLID STATE PROTECTION SYSTEM TRAIN 'A' ACTUATION CAB.
ES-CCO70-C - VALVE STEM MTD POSITION SW. CONTROL PWR NOT AVAILABLE
480V MCC EIA2 COMPT C3 MECH. EQUIP. NO 2R20ITCCO70

NUCLEAR SAFETY RELATED CLASS 1E

PKG: 038 SUFF: 102 ACT: 581

DRAWING TITLE: ELECTRICAL
ELEMENTARY DIAGRAM
RCFC CHILLED WTR (H3) RETURN VALVE CCO70

CONTRACT NO: CR-0241
SCALE: NONE
DRAWING NO: 4-R-20
I-E-4849-C

| DATE | DESCRIPTION | BY | CHK | ENG | NO | PROJ | NO | ENG | NO |
|----------|-----------------------------|------|-----|-----|-----|------|-----|-----|-----|
| 07/10/80 | REVISED AND ISSUED | DRW | RD | ... | ... | ... | ... | ... | ... |
| 07/10/80 | ISSUED FOR USE | DB | GE | ... | ... | ... | ... | ... | ... |
| 07/10/80 | ISSUED FOR REVIEW (COMMENT) | A.S. | HEE | ... | ... | ... | ... | ... | ... |

Brown & Root Inc.
ENGINEERS CONSTRUCTORS
HOUSTON, TEXAS

SOUTH TEXAS PROJECT

BROWN & ROOT INC. MICROFILM SERVICES



THURSDAY, JULY 10 1980

RIDS

8112100628

