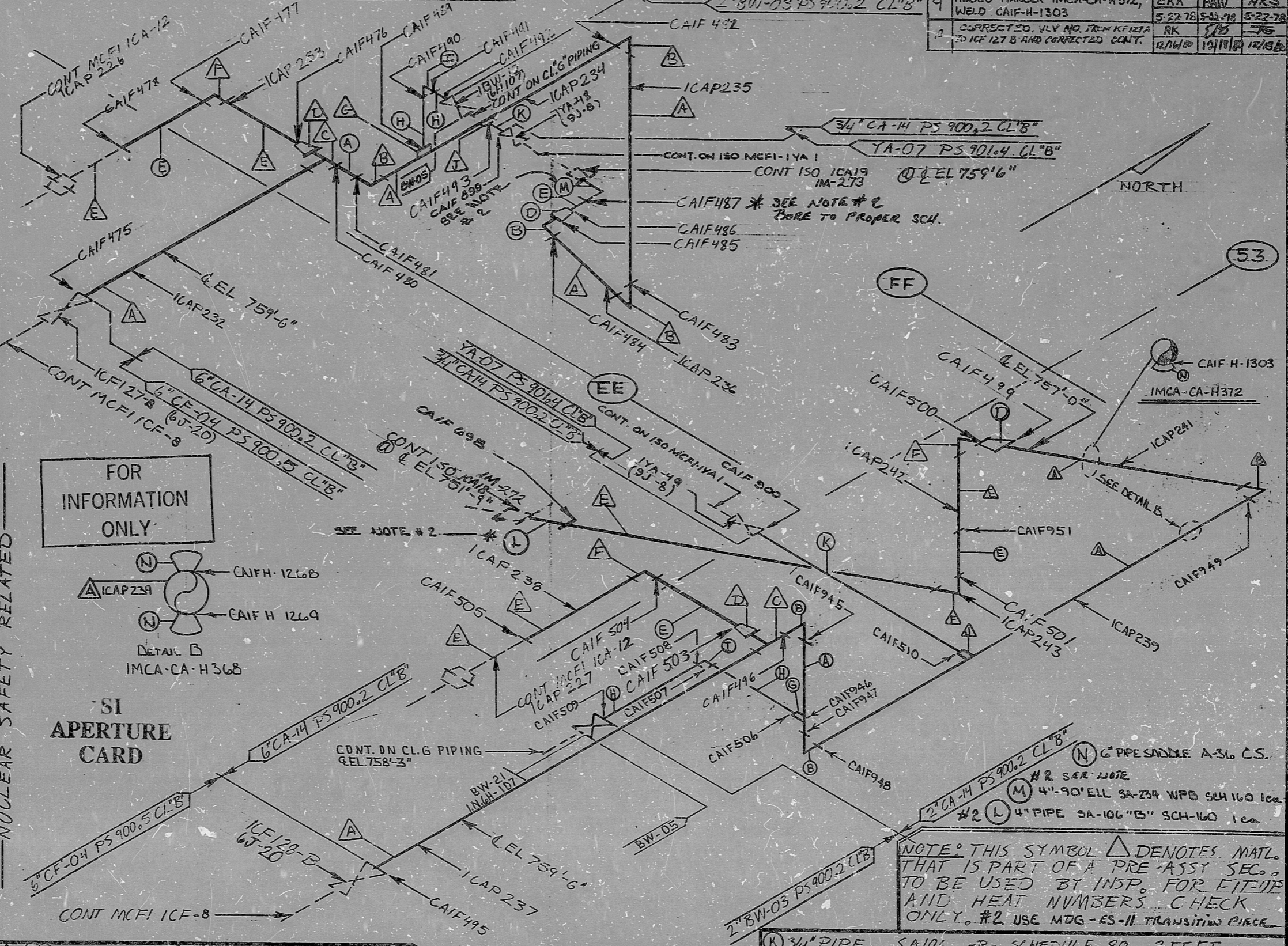


INSUR VICE INSPECTION

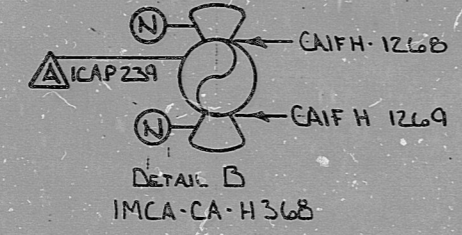
REV. 10	ISO NO: MCFI 1CA-13	BUILDING: REACTOR (ZONE 2)
	DUKE PIPING CLASS: ASME SECTION III, CL. B	
	SYSTEM SYMBOL: CA-14	
	PIPING SPEC.: PS 900.2	
	DRAWING NO.: MC1403-01.20-00, 01	
	PROJECT: M&C-UIRE	

6	CHANGE ELEV. AT SYSTEM CHANGE TO "BW" 4	VIP	HAW	RDT
7	DELETE WELDS CAIF1194-1191 AND MAT. N	224-78	224-78	227-78

8	ADDED IMCA-CA-H368, MAT N	REA	HAW	HKS
9	ADDED HANGER IMCA-CA-H372, WELD CAIF-H-1303	3-18-78	3-18-78	3-21-78
10	CORRECTED VLV NO. FROM ICF127A TO ICF 127 B AND CORRECTED CONT.	5-22-78	5-22-78	5-22-78
		12/14/80	12/14/80	12/14/80



FOR INFORMATION ONLY



SI APERTURE CARD

NO.	REVISION	DATE	CHKD.	APPR.
5	ADDED WELDS CAIF 1194-1191 AND MATERIAL (N)	2-17-78	RM	EDT
4	DELETED WELDS CAIF497 & 498 CONF. CHANGE ADDED WELDS CAIF 945 THRU CAIF 949 & CAIF 951 PER V.N. 12303	12/17/77	JDL	EDT
3	REVERSED PENETRATIONS	12/17/77	EDT	EDT
2	ADDED CONTINUATIONS AND WELDS CAIF 899, CAIF 900, CAIF 901, CAIF 902, CAIF 903, CAIF 904, CAIF 905, CAIF 906, CAIF 907, CAIF 908, CAIF 909, CAIF 910, CAIF 911, CAIF 912, CAIF 913, CAIF 914, CAIF 915, CAIF 916, CAIF 917, CAIF 918, CAIF 919, CAIF 920, CAIF 921, CAIF 922, CAIF 923, CAIF 924, CAIF 925, CAIF 926, CAIF 927, CAIF 928, CAIF 929, CAIF 930, CAIF 931, CAIF 932, CAIF 933, CAIF 934, CAIF 935, CAIF 936, CAIF 937, CAIF 938, CAIF 939, CAIF 940, CAIF 941, CAIF 942, CAIF 943, CAIF 944, CAIF 945, CAIF 946, CAIF 947, CAIF 948, CAIF 949, CAIF 950, CAIF 951, CAIF 952, CAIF 953, CAIF 954, CAIF 955, CAIF 956, CAIF 957, CAIF 958, CAIF 959, CAIF 960, CAIF 961, CAIF 962, CAIF 963, CAIF 964, CAIF 965, CAIF 966, CAIF 967, CAIF 968, CAIF 969, CAIF 970, CAIF 971, CAIF 972, CAIF 973, CAIF 974, CAIF 975, CAIF 976, CAIF 977, CAIF 978, CAIF 979, CAIF 980, CAIF 981, CAIF 982, CAIF 983, CAIF 984, CAIF 985, CAIF 986, CAIF 987, CAIF 988, CAIF 989, CAIF 990, CAIF 991, CAIF 992, CAIF 993, CAIF 994, CAIF 995, CAIF 996, CAIF 997, CAIF 998, CAIF 999, CAIF 1000	12/17/77	EDT	EDT
1	ADDED TRANSITION PIPE "M & L" AND CONT. AT ICAIF 1CA19	12/17/77	EDT	EDT
0	RELEASED FOR CONSTRUCTION PER V.N. 8722	12/17/77	EDT	EDT

- ⊙ 4" PIPE SA106 -B- SCHEDULE 80 4 FEET
- ⊙ 6" X 4" RED. SA 234 WPTB SCHEDULE 80 2 REQUIRED
- ⊙ 6" X 6" X 6" TEE SA234 WPTB SCHEDULE 80
- ⊙ 6" 90° ELL SA234 WPTB SCHEDULE 80 1 REQUIRED
- ⊙ 5" PIPE SA106 -B- SCHEDULE 80 1-6" REQUIRED
- ⊙ 3/4" HALF CPLG. SA105/3000" - SA234 WPTB/3000"
- ⊙ 2" 90° ELL SA105/3000" - SA234 WPTB/3000" 2 REQUIRED
- ⊙ 2" PIPE SA106 -B- SCHEDULE 80 7 FEET
- ⊙ 2" HALF CPLG. SA105/3000" - SA234 WPTB/3000"
- ⊙ 4" 90° ELL SA234 WPTB SCHEDULE 80 1 REQUIRED
- ⊙ 3/4" PIPE SA106 -B- SCHEDULE 80 2 FEET
- ⊙ 6" PIPE SADDLE A-36 CS.
- ⊙ #2 SEE NOTE
- ⊙ 4" 90° ELL SA-234 WPTB SCH 160 1 ea
- ⊙ 4" PIPE SA-106 "B" SCH-160 1 ea

NOTE: THIS SYMBOL Δ DENOTES MATL. THAT IS PART OF A PRE-ASSY SEC. TO BE USED BY INSP. FOR FITUPS AND HEAT NUMBERS CHECK ONLY. #2 USE MDG-ES-11 TRANSITION PIECE

DUNGAN-PANELL, INC. CHARLOTTE 1878

8903220404

PDR RIDS

